

# GEOGRAPHICAL RESPONSE PLAN

## KEYSTONE PIPELINE SYSTEM

*DEC 2020*

FOR TRANSCANADA PIPELINE USE ONLY

Not controlled when printed.

RIVERS (MB) AREA

RESPONSE SUMMARY

**Revision Date:** August 2016

Prior to use, validate printed copies against the official version (Doc ID 13937009) in FileNet.

This Geographic Emergency Response Plan (GRP) is a component of the Keystone Emergency Response Plan (ERP). Information herein does not supersede any component of the ERP.

The purpose of this plan is to facilitate expedited and efficient emergency response operations to protect people and the environment near Lake Watopah and the downstream portion of the Little Saskatchewan River.

This plan should be referenced as a guide only during emergency response. All actions should be modified to meet the demands of a specific incident. This plan does not direct actions, but merely serves as a resource to responders.

All responders using this plan should ensure the TransCanada First Responder Checklist is completed before implementing this plan.

Recommendations in this GRP may be applied to releases from TransCanada's Keystone Pipeline in the Crandall Section between valves CRNDL+37\_7 and CRNDL +43\_0.

The surrounding area consists of an eroded surface of coarse sediments, and poorly drained clay soils. The surrounding land use is primarily agriculture with numerous un-drained depressions. This area generally has a high water table therefore groundwater contamination would be a concern. The municipalities within this GRP are Oakview, Riverdale, Whitehead and Cornwallis.

Culturally and environmentally sensitive receptors need to be protected and preserved in the unlikely event of a release. These receptors have been identified through publically available data from both federal and provincial agencies within a 1km buffer of each source and tactical control points. The Little Saskatchewan River at Rivers MB Tactical Plans includes a list of all environmental and cultural receptors for each control point. The identified receptors include water intakes, aquifers, water wells, historic sites, environmentally sensitive areas, aboriginal reserves, soil type, drainage pathway and species of concern.

Below is a table showing all species of concern for both federal and provincial status. Each species are ranked as endangered, extirpated, threatened, of special concern or not listed. The definitions of these classifications are as follows:

**Endangered:** A wildlife species facing imminent extirpation or extinction

**Extirpated:** A wildlife species that no longer exists in the wild in Canada, but exists elsewhere

**Threatened:** A wildlife species that is likely to become endangered if nothing is done to reverse the factors leading to its extirpation or extinction

**Special concern:** A species is of special concern because of characteristics that make it particularly sensitive to human activities or natural events.

**Not listed:** A species for which there is insufficient scientific information to support status designation.

Wildlife Species	SARA Status	Provincial Status	Ecoregion
<b>Mammals</b>			
Mule or Black-tailed Deer	not listed	threatened	lake Manitoba plain/ Aspen Parkland

**Revision Date:** August 2016

Prior to use, validate printed copies against the official version (Doc ID 13937009) in FileNet.

<b>Birds</b>			
Burrowing Owl	endangered	endangered	lake Manitoba plain/ Aspen Parkland
Canada Warbler	threatened	endangered	lake Manitoba plain/ Aspen Parkland
Chimney Swift	threatened	threatened	lake Manitoba plain/ Aspen Parkland
Piping Plover	endangered	endangered	lake Manitoba plain/ Aspen Parkland
Common Nighthawk	threatened	threatened	lake Manitoba plain/ Aspen Parkland
Yellow Rail	special concern	not listed	lake Manitoba plain/ Aspen Parkland
Golden-winged Warbler	threatened	threatened	lake Manitoba plain/ Aspen Parkland
Loggerhead Shrike	endangered	not listed	lake Manitoba plain/ Aspen Parkland
Red-headed Woodpecker	threatened	threatened	lake Manitoba plain/ Aspen Parkland
Short-eared Owl	special concern	threatened	lake Manitoba plain/ Aspen Parkland
Sprague's Pipit	threatened	threatened	lake Manitoba plain/ Aspen Parkland
Whip-poor-will	not listed	threatened	lake Manitoba plain/ Aspen Parkland
Bobolink	not listed	not listed	lake Manitoba plain/ Aspen Parkland
Horned Grebe	not listed	not listed	lake Manitoba plain/ Aspen Parkland
Least Bittern	threatened	endangered	lake Manitoba plain/ Aspen Parkland
Olive Sided Fly Catcher	threatened	not listed	lake Manitoba plain/ Aspen Parkland
Rusty Blackbird	special concern	not listed	lake Manitoba plain/ Aspen Parkland
Whooping Crane	endangered	endangered	lake Manitoba plain/ Aspen Parkland
Barn Swallow	not listed	not listed	lake Manitoba plain/ Aspen Parkland
Baird's sparrow	not listed	endangered	lake Manitoba plain/ Aspen Parkland
Ferruginous Hawk	threatened	endangered	lake Manitoba plain/ Aspen Parkland
<b>Amphibians</b>			
Northern Leopard Frog	special concern	not listed	lake Manitoba plain/ Aspen Parkland
<b>Fish</b>			
Silver Chub	special concern	not listed	lake Manitoba plain/ Aspen Parkland
<b>Arthropods</b>			
Dakota Skipper	threatened	threatened	lake Manitoba plain/ Aspen Parkland
Monarch Butterfly	special concern	not listed	lake Manitoba plain/ Aspen Parkland
Uncas Skipper	not listed	endangered	lake Manitoba plain/ Aspen Parkland
<b>Reptiles</b>			
Common Snapping Turtle	not listed	not listed	lake Manitoba plain/ Aspen Parkland
Prairie Skink	endangered	not listed	lake Manitoba plain/ Aspen Parkland
Western Hognose Snake	not listed	threatened	lake Manitoba plain/ Aspen Parkland
<b>Vascular Plants</b>			
Small White Lady's-slipper	endangered	endangered	lake Manitoba plain/ Aspen Parkland
Western Silvery Aster	not listed	threatened	lake Manitoba plain/ Aspen Parkland
Western Ironweed	not listed	endangered	lake Manitoba plain/ Aspen Parkland
Smooth Goosefoot	threatened	endangered	lake Manitoba plain/ Aspen Parkland
Rough Agalinis	endangered	endangered	lake Manitoba plain/ Aspen Parkland

**Revision Date:** August 2016

Prior to use, validate printed copies against the official version (Doc ID 13937009) in FileNet.

*\*Disclaimer: if a species is not listed in on either provincial status or on SARA, it is listed on COSEWIC as a species at risk*

A TransCanada Environmental Specialist will be responsible for managing environmental matters associated with incident response operations, including: environmental assessment; permitting; environmental monitoring and damage assessment; and sensitive habitat and wildlife protection and rehabilitation.

**Revision Date:** August 2016

Prior to use, validate printed copies against the official version (Doc ID 13937009) in FileNet.

TABLE OF CONTENTS

Table of Contents

MAPS ..... 5

MEDICAL PLAN (ICS FORM 206)..... 9

RESOURCE REQUIRMENT MATRIX..... 10

POTENTIAL INCIDENT COMMAND POST FACILITIES..... 11

POTENTIAL STAGING AREAS..... 12

LOCAL LODGING..... 13

LOCAL CATERING SERVICES..... 14

LOCAL RESPONSE CONTRACTORS..... 15

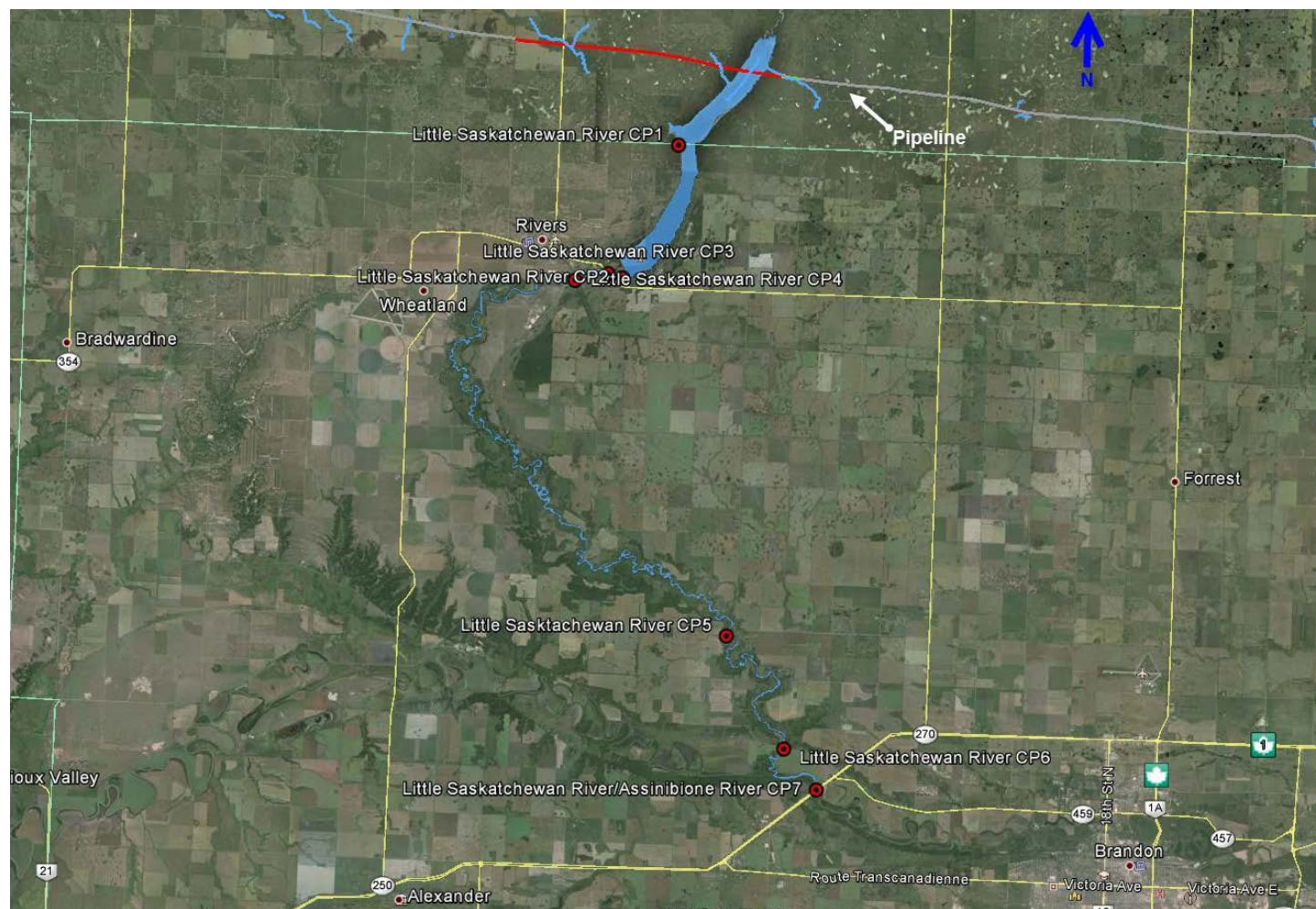
LOCAL CONTACTS..... 16

CONTROL POINTS ASSOCIATED WITH THIS PLAN..... 18

## MAPS

**Revision Date:** August 2016

Prior to use, validate printed copies against the official version (Doc ID 13937009) in FileNet.



**Map 1:**

Overview Map of entire  
Rivers GRP Area

**Revision Date:** August 2016

Prior to use, validate printed copies against the official version (Doc ID 13937009) in FileNet.





**Revision Date:** August 2016

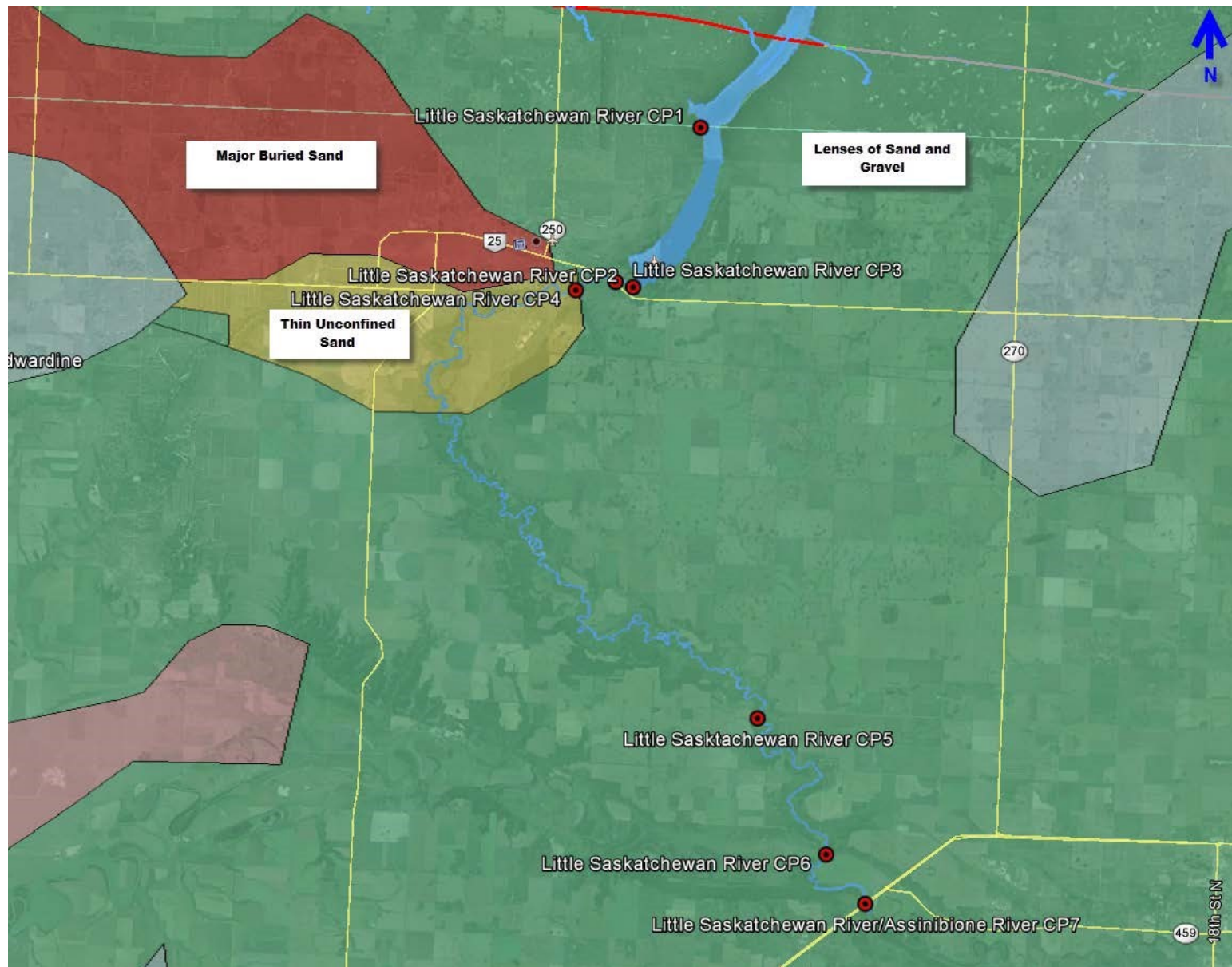
Prior to use, validate printed copies against the official version (Doc ID 13937009) in FileNet.



**Map 2:** identifies protected areas within the GRP

**Revision Date:** August 2016

Prior to use, validate printed copies against the official version (Doc ID 13937009) in FileNet.



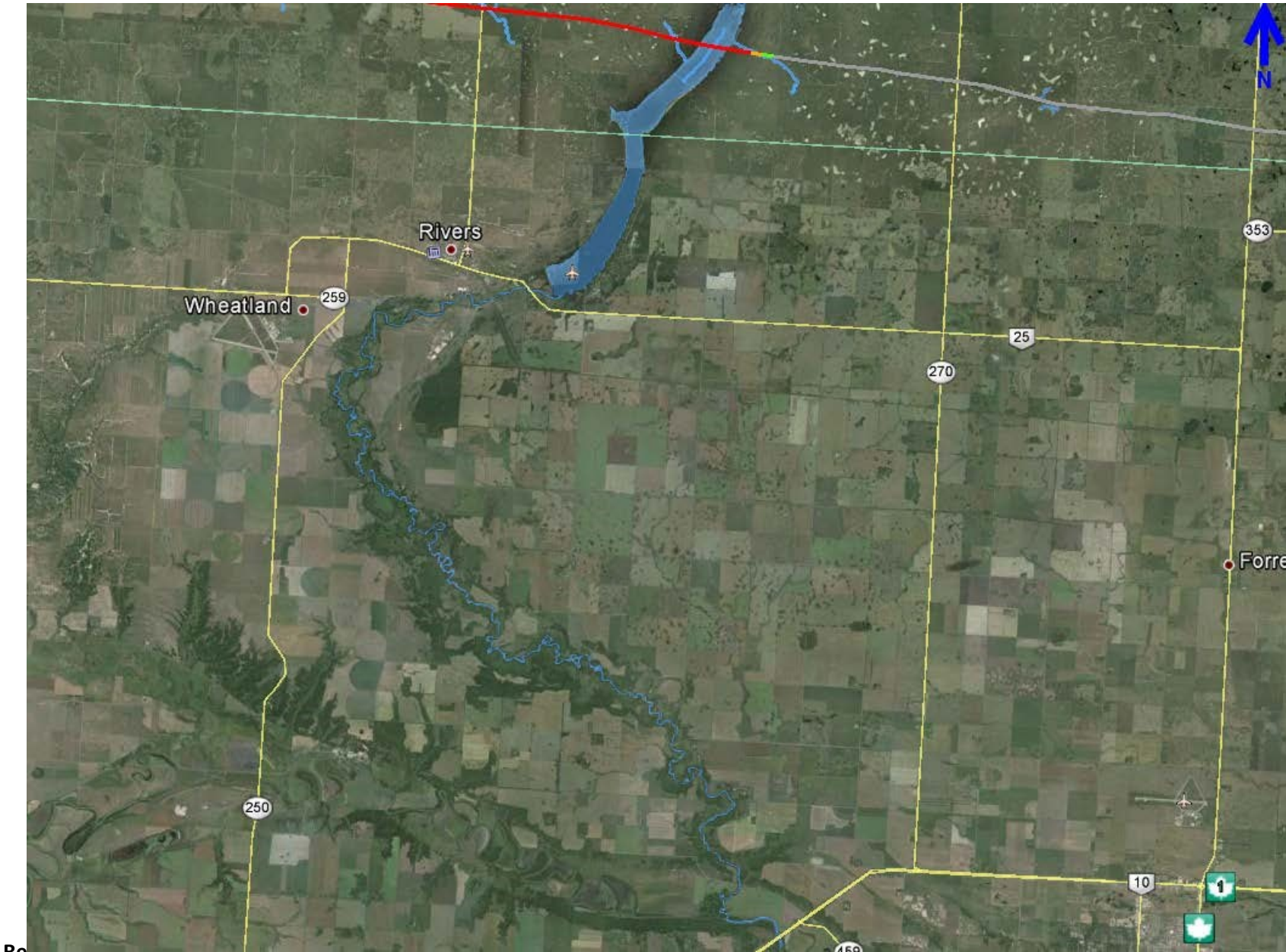
**Revision Date:** August 2016

Prior to use, validate printed copies against the official version (Doc ID 13937009) in FileNet.

**Map 3:** displays sand and gravel  
aquifers within the GRP

**Revision Date:** August 2016

Prior to use, validate printed copies against the official version (Doc ID 13937009) in FileNet.



Revision Date: August 2010

Prior to use, validate printed copies against the official version (Doc ID 13937009) in FileNet.

**Map 4:** displaying the water channels within the GRP

**Revision Date:** August 2016

Prior to use, validate printed copies against the official version (Doc ID 13937009) in FileNet.



<b>MEDICAL PLAN (ICS FORM 206)</b>
------------------------------------

<b>Transportation</b>
-----------------------

Name	Location	Contact #	Paramedics On-Site (Y/N)
Rivers Fire Department	670 2 AVE, Rivers, MB	911	N
The Rivers & District ambulance serves		911	Y
Riverdale Health Centre	512 Quebec Street Box 428 Rivers, MB R0K 1X0	(204) 328-5321	Y
Rapid City Fire Department	410 3 Ave, Rapid City, MB		N
Brandon Fire Hall	120 19 St N, Brandon, MB R7B 3X6	(204) 729-2403 /911	Y

<b>Hospitals</b>
------------------

Hospital Name	Address	Contact #	Travel Time		Burn Center	Heli-Pad
			Air	Ground		
Rivers Medical Centre	512 Quebec St, Rivers, MB R0K 1X0	(204) 328-7941				
Minnedosa & District Hospital	334-1st Street SW, Minnedosa, MB R0J 1E0	(204) 867-2701				
Brandon Regional Health Centre	150 McTavish Ave E, Brandon, MB R7A 2B3	(204) 578-4000				

<b>Special Medical Emergency Procedures</b>
---

**Revision Date:** August 2016

Prior to use, validate printed copies against the official version (Doc ID 13937009) in FileNet.

## RESOURCE REQUIREMENT MATRIX

	Calculation	Substantive Spills Avg. Probable (1% WCD) <span style="color: red;">Redacted 2d</span>	Large Spills Max. Most Probable (10% WCD) <span style="color: red;">Redacted 2d</span>	Worst Case Discharge (WCD) <span style="color: red;">Redacted 2d</span>
Skimmer (TDS 118)	=Volume of oil released/2,400 bbls x 2 to compensate for less 100% efficiency 1 skimmer = 2,400 bbls/day	1	4	40
Powerplant (Generator)	=1 per skimmer	1	4	40
Pump	=1 per skimmer	1	4	40
Boom (ft)	=1000 feet per recovery site	1000	4000	40,000
Vac Truck	=Volume of oil released/Vac Truck capacity/4 trips per day Vac Truck Capacity= 70bbls	2	18	171
Storage (Frac Tank)	=Volume of oil released/Frac Tank capacity x 2 Frac Tanks = 500 bbls	2	20	192

*\*this GRP is located in Response Zone 2 of the Keystone ERP. The WCD was determined by the Pipeline and Hazardous Materials Safety Administration Discharge Volume Association. Within the specific area of this GRP the WCD is Redacted 2d*

**Revision Date:** August 2016

Prior to use, validate printed copies against the official version (Doc ID 13937009) in FileNet.

## POTENTIAL INCIDENT COMMAND POST FACILITIES

Name/Address	Phone Number	Distance From – Center (km)	Conference Room Size	Food Service On Site (Y/N)	Internet Access (Y/N)	Notes
Riverdale Community Centre 101 Main St. Rivers, MB R0K 1X0	General Inquiries: (204) 328-7753 Booking: (204) 3287468			N		Redacted 1b
Rapid city Community complex 645 4th Ave, Rapid City, MB R0K 1W0	204-720-0997 204-210-0418			N		
Victoria Inn 3550 Victoria Ave, Brandon, MB R7B 2L8	(204) 725-1532		8- 600 people	Y	Y	12 meeting rooms
Days Inn-Brandon 2130 Currie Blvd, Brandon, MB R7B 4E7	(204) 727-3600		400sqft of meeting space	N	Y	No food onsite, directly adjacent to a family entertainment complex equipped with restaurant
Brandon Central Community Centre 529 - 4th Street, R7A 3H5	Redacted 1b		110 people	N	N	Redacted 1b
Brandon North End Community Centre 1313 Stickney Avenue	Redacted 1b		173 people	N	N	Redacted 1b
West End Community Centre 247-23rd Street R7B 1V5	Redacted 1b		127 people	N	N	Redacted 1b Website: <a href="http://www.weccbrandon.com">www.weccbrandon.com</a>

**Revision Date:** August 2016

Prior to use, validate printed copies against the official version (Doc ID 13937009) in FileNet.

Westridge Community Centre 32 Willowdale Crescent W.E.P.O. Box 21021 Brandon, MB R7B 3W8	Redacted 1b		120 people			Redacted 1b
Valleyview community Centre 77 Whillier Drive R7B 0X8	Redacted 1b		134 people			Redacted 1b
Keystone Centre	Redacted 1b		12-2,500 people	Y	Y	

**Revision Date:** August 2016

Prior to use, validate printed copies against the official version (Doc ID 13937009) in FileNet.



POTENTIAL STAGING AREAS

Name/Address Lat/Long	Landowner	Phone number	Size / Area	Description (Paved Gravel, Field, etc.)
--------------------------	-----------	--------------	-------------	---

\*\* TO BE DETERMINED BY TACTICAL CONTROL POINT FORMS

Revision Date: August 2016

Prior to use, validate printed copies against the official version (Doc ID 13937009) in FileNet.

## LOCAL LODGING

Name/Address Lat/Long	Phone Number	Distance From – Center (Miles/Kilometers)	Units (Total)	Food Service On-Site (Y/N)	Internet Access (Y/N)	Notes
Victoria Inn 3550 Victoria Ave, Brandon, MB R7B 2L8	(204) 725-1532			Y	Y	
Days Inn-Brandon 2130 Currie Blvd, Brandon, MB R7B 4E7	(204) 727-3600			N	Y	
Lakeview Inns & Suites 1880 18 ST N, Brandon, MB	(204) 728-1880		66	N	Y	
Best Western Plus Brandon Inn 205 Middleton Ave, Brandon, MB R7C 1A8	(204) 727-7997		79	N	Y	
Motel 6 815 Middleton Ave Brandon, MB R7C 1A8	(204)-726-4000			N	Y	
Comfort Inn 925 Middleton Avenue, Brandon, MB R7C 1A8	(204) 727-6232			N	Y	

**Revision Date:** August 2016

Prior to use, validate printed copies against the official version (Doc ID 13937009) in FileNet.

## LOCAL CATERING SERVICES

Name/Address Lat/Long	Phone Number	Distance From – Center (Miles/Kilometers)	Delivery (Y/N)	Notes
Brandon University Catering	(204) 727-9670 or 7396 for more information		Y	
Aida's Catering 2037 Princess Ave, Brandon, MB R7B 0H5	(204) 725-2792		Y	
Chicken Jack's & West Avenue Steakhouse 660 2nd Ave, Rivers, MB R0K 1X0	(204) 328-7938		N	
Lee's Restaurant 540 Second Ave Rivers	(204) 328-7502		N	
Quiznos Subs & Salads 1815 Middleton Ave, Brandon, MB R7C 1A7	(204) 727-5051		N	
Pizza Hut 1860 18th St N, Brandon, MB R7C 1A5	(204) 726-0600		N	
Subway 1890 18th St N, Brandon, MB R7C 1A5	(204) 727-2417		N	
Perfect Pita 535 34th St Brandon	(204) 728-8888		N	

**Revision Date:** August 2016

Prior to use, validate printed copies against the official version (Doc ID 13937009) in FileNet.

## LOCAL RESPONSE CONTRACTORS (Cont'd)

Name/Address Lat/Long	Phone Number	Distance From- Center (Miles/Kilometers)	Notes
Quantum Murray Emergency Response	(877) 378-7745		
Manitoba Producers Oil Spill Co-op	(204)748-4260		<b>Redacted 1b</b>
Tervita Corporation	1-800-32-SPILL (77455)		24hr North American Emergency Response Line
Euroway Industrial Services	(204) 661-0500		
Stantec Consulting			Environmental Sampling and consulting For Manitoba/Sask area contact <b>Redacted 1b</b> For work in Alberta contact <b>Redacted 1b</b>
Tetra Tech Consulting			Environmental Sampling and consulting Please contact <b>Redacted 1b</b>
Focus Wildlife	1-310-386-5965		
NewAlta	1-800-774-8466		24hr Emergency Response Line

**Revision Date:** August 2016

Prior to use, validate printed copies against the official version (Doc ID 13937009) in FileNet.

## LOCAL CONTACTS

Name	Location	Phone Numbers
Rivers Manitoba Police Department	P.O. Box 940 670 2nd Ave. Rivers, MB R0K 1X0	(204) 328-7430
Rivers Fire Department	670 2 AVE, Rivers, MB	911
The Rivers & District ambulance serves		911
Rapid City Fire Department	410 3 Ave, Rapid City, MB	911
Brandon Fire Hall	120 19 St N, Brandon, MB R7B 3X6	(204) 729-2400 /911
Brandon Police Dept.	21 8 St, Brandon, MB R7A 3W7	(204) 729-2352
Brandon RCMP	17 St E, Forrest, MB R0K 0W0	9-1-1 / (204)726-7500
City of Brandon		Enquiry Line – (204) 729-2186 <b>Redacted 1b</b>
Rural Municipality of Oakview	Box 179, 10 Cochrane Street Oak River, Manitoba R0K 1T0	(204) 566-2146
Rural Municipality of Riverdale	670 — 2nd Ave Rivers, MB	(204) 328-5300
Rural Municipality of Whitehead	517-2nd Avenue Alexander, MB R0K 0A0	(204) 328-5300
Rural Municipality of Cornwallis	Site 500 Box 10, R.R. 5 Brandon, Manitoba R7A 5Y5	(204) 725-8686



**Revision Date:** August 2016

Prior to use, validate printed copies against the official version (Doc ID 13937009) in FileNet.

This Geographic Response Plan includes several Control Points which may be referenced for recommendation or considerations when containing or recovering released oil in the Rivers, MB area. When this plan is viewed in electronic format with access to the TransCanada intranet, the links below can be clicked to access each Control Point. When this plan is printed and viewed in paper format, the Control Points should also be printed and attached to the Plan.

## **LITTLE SASKATCHEWAN RIVER**

[SCP-MB-LITTLE SASKATCHEWAN-1](#)  
[TCP-MB-LITTLE SASKATCHEWAN-1](#)  
[TCP-MB-LITTLE SASKATCHEWAN-2](#)  
[TCP-MB-LITTLE SASKATCHEWAN-3](#)  
[TCP-MB-LITTLE SASKATCHEWAN-4](#)  
[TCP-MB-LITTLE SASKATCHEWAN-5](#)  
[TCP-MB-LITTLE SASKATCHEWAN-6](#)  
[TCP-MB-LITTLE SASKATCHEWAN-7](#)

**Revision Date:** August 2016

Prior to use, validate printed copies against the official version (Doc ID 13937009) in FileNet.