

# **GEOGRAPHICAL RESPONSE PLAN**

## **KEYSTONE PIPELINE SYSTEM**

FOR TRANSCANADA PIPELINE USE ONLY

Not controlled when printed.

Updated December 2020

### **MINIOTA (MB) AREA**

#### **RESPONSE SUMMARY**

This Geographic Emergency Response Plan (GRP) is a component of the Keystone Emergency Response Plan (ERP). Information herein does not supersede any component of the ERP.

The purpose of this plan is to facilitate expedited and efficient emergency response operations to protect people and the environment near the Assiniboine River crossing in Miniota.

This plan should be referenced as a guide only during emergency response. All actions should be modified to meet the demands of a specific incident. This plan does not direct actions, but merely serves as a resource to responders.

All responders using this plan should ensure the TransCanada First Responder Checklist is completed before implementing this plan.

Recommendations in this GRP may be applied to releases from TransCanada's Keystone Pipeline in the Moosomin Section from valve MOSMI+30\_0 to MOSMI+31\_8. This GRP affects the municipality of Miniota MB and services from the municipality of Wallace.

The surrounding area is part of the western uplands and Great Plains region which lies within the Assiniboine river watershed. Undulating till plains with depressions creating lakes and marshes, the area has the majority of well-drained soil in the south restricted drainage elsewhere. This area has a generally high water table.

Culturally and environmentally sensitive receptors need to be protected and preserved in the unlikely event of a release. These receptors have been identified through publicly available data from both federal and provincial agencies within a 1km buffer of each source and tactical control points. The Assiniboine River at Miniota Tactical Plans includes a list of all environmental and cultural receptors for each control point. The identified receptors include aquifers, water wells, historic sites, environmentally sensitive areas, aboriginal reserves, soil type, drainage pathway and species of concern.

Below is a table showing all species of concern for both federal and provincial status. Each species are ranked as endangered, extirpated, threatened, of special concern or not listed. The definitions of these classifications are as follows:

**Endangered:** A wildlife species facing imminent extirpation or extinction

**Extirpated:** A wildlife species that no longer exists in the wild in Canada, but exists elsewhere

**Threatened:** A wildlife species that is likely to become endangered if nothing is done to reverse the factors leading to its extirpation or extinction

**Special concern:** A species is of special concern because of characteristics that make it particularly sensitive to human activities or natural events.

**Not listed:** A species for which there is insufficient scientific information to support status designation.

Wildlife Species	SARA Status	Provincial Status	Ecoregion
<b>Mammals</b>			
Mule or Black-tailed Deer	not listed	threatened	lake Manitoba plain/ Aspen Parkland
<b>Birds</b>			
Burrowing Owl	endangered	endangered	lake Manitoba plain/ Aspen Parkland
Canada Warbler	threatened	endangered	lake Manitoba plain/ Aspen Parkland
Chimney Swift	threatened	threatened	lake Manitoba plain/ Aspen Parkland
Piping Plover	endangered	endangered	lake Manitoba plain/ Aspen Parkland
Common Nighthawk	threatened	threatened	lake Manitoba plain/ Aspen Parkland
Yellow Rail	special concern	not listed	lake Manitoba plain/ Aspen Parkland
Golden-winged Warbler	threatened	threatened	lake Manitoba plain/ Aspen Parkland
Loggerhead Shrike	endangered	not listed	lake Manitoba plain/ Aspen Parkland
Red-headed Woodpecker	threatened	threatened	lake Manitoba plain/ Aspen Parkland
Short-eared Owl	special concern	threatened	lake Manitoba plain/ Aspen Parkland
Sprague's Pipit	threatened	threatened	lake Manitoba plain/ Aspen Parkland
Whip-poor-will	not listed	threatened	lake Manitoba plain/ Aspen Parkland
Bobolink	not listed	not listed	lake Manitoba plain/ Aspen Parkland
Horned Grebe	not listed	not listed	lake Manitoba plain/ Aspen Parkland
Least Bittern	threatened	endangered	lake Manitoba plain/ Aspen Parkland
Olive Sided Fly Catcher	threatened	not listed	lake Manitoba plain/ Aspen Parkland
Rusty Blackbird	special concern	not listed	lake Manitoba plain/ Aspen Parkland
Whooping Crane	endangered	endangered	lake Manitoba plain/ Aspen Parkland
Barn Swallow	not listed	not listed	lake Manitoba plain/ Aspen Parkland
Baird's sparrow	not listed	endangered	lake Manitoba plain/ Aspen Parkland
Ferruginous Hawk	threatened	endangered	lake Manitoba plain/ Aspen Parkland
<b>Amphibians</b>			
Northern Leopard Frog	special concern	not listed	lake Manitoba plain/ Aspen Parkland
<b>Fish</b>			
Silver Chub	special concern	not listed	lake Manitoba plain/ Aspen Parkland
<b>Arthropods</b>			
Dakota Skipper	threatened	threatened	lake Manitoba plain/ Aspen Parkland
Monarch Butterfly	special concern	not listed	lake Manitoba plain/ Aspen Parkland
Uncas Skipper	not listed	endangered	lake Manitoba plain/ Aspen Parkland
<b>Reptiles</b>			
Common Snapping Turtle	not listed	not listed	lake Manitoba plain/ Aspen Parkland

Prairie Skink	endangered	not listed	lake Manitoba plain/ Aspen Parkland
Western Hognose Snake	not listed	threatened	lake Manitoba plain/ Aspen Parkland
<b>Vascular Plants</b>			
Small White Lady's-slipper	endangered	endangered	lake Manitoba plain/ Aspen Parkland
Western Silvery Aster	not listed	threatened	lake Manitoba plain/ Aspen Parkland
Western Ironweed	not listed	endangered	lake Manitoba plain/ Aspen Parkland
Smooth Goosefoot	threatened	endangered	lake Manitoba plain/ Aspen Parkland
Rough Agalinis	endangered	endangered	lake Manitoba plain/ Aspen Parkland

*\*Disclaimer: if a species is not listed in on either provincial status or on SARA, it is listed on COSEWIC as a species at risk*

A TransCanada Environmental Specialist will be responsible for managing environmental matters associated with incident response operations, including: environmental assessment; permitting; environmental monitoring and damage assessment; and sensitive habitat and wildlife protection and rehabilitation.

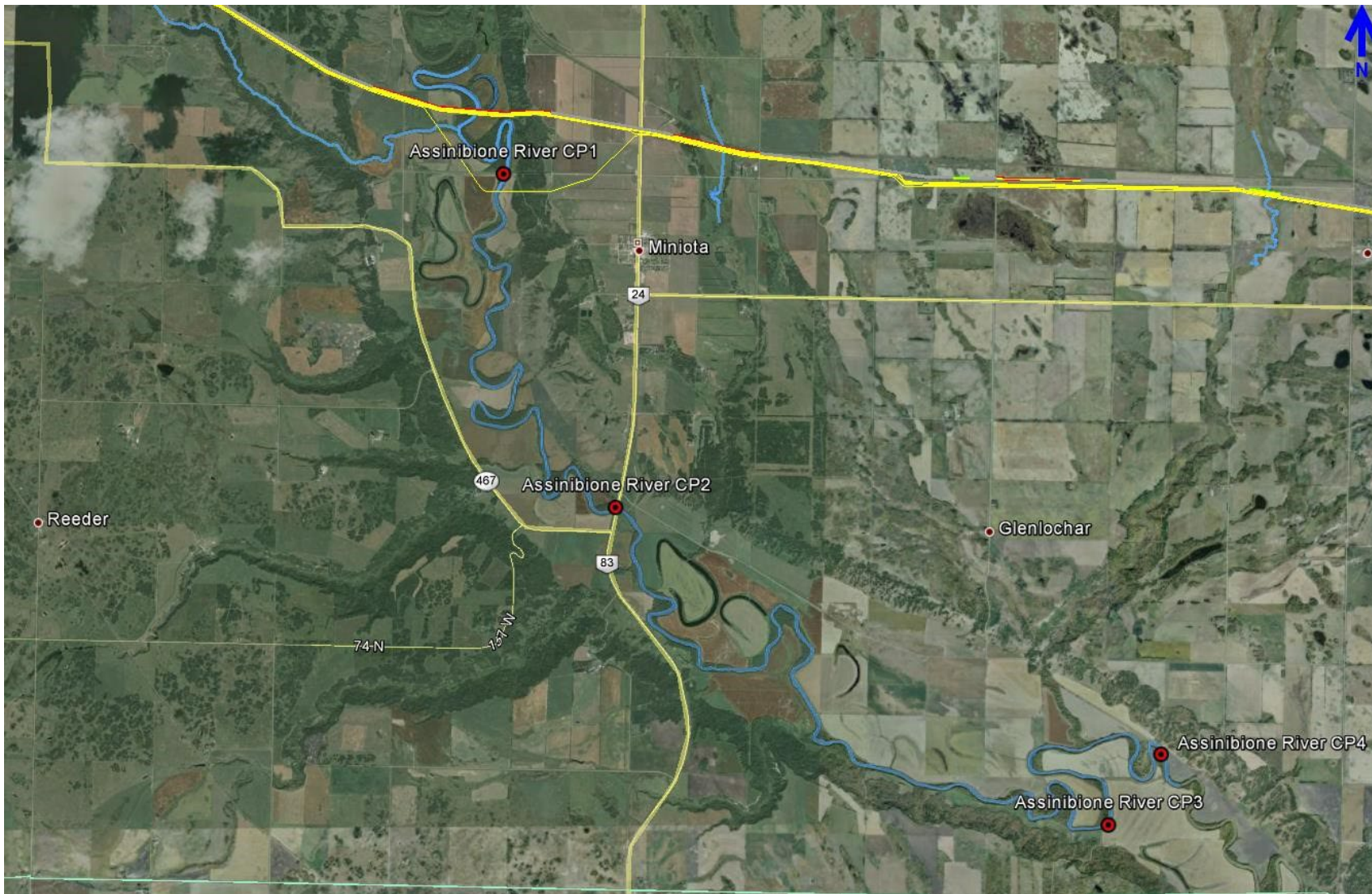
## TABLE OF CONTENTS

### Table of Contents

MAPS .....	5
MEDICAL PLAN (ICS FORM 206).....	9
RESOURCE REQUIRMENT MATRIX.....	10
POTENTIAL INCIDENT COMMAND POST FACILITIES.....	11
POTENTIAL STAGING AREAS.....	12
LOCAL LODGING.....	13
LOCAL CATERING SERVICES.....	14
LOCAL RESPONSE CONTRACTORS.....	15
LOCAL CONTACTS.....	16
CONTROL POINTS ASSOCIATED WITH THIS PLAN.....	17

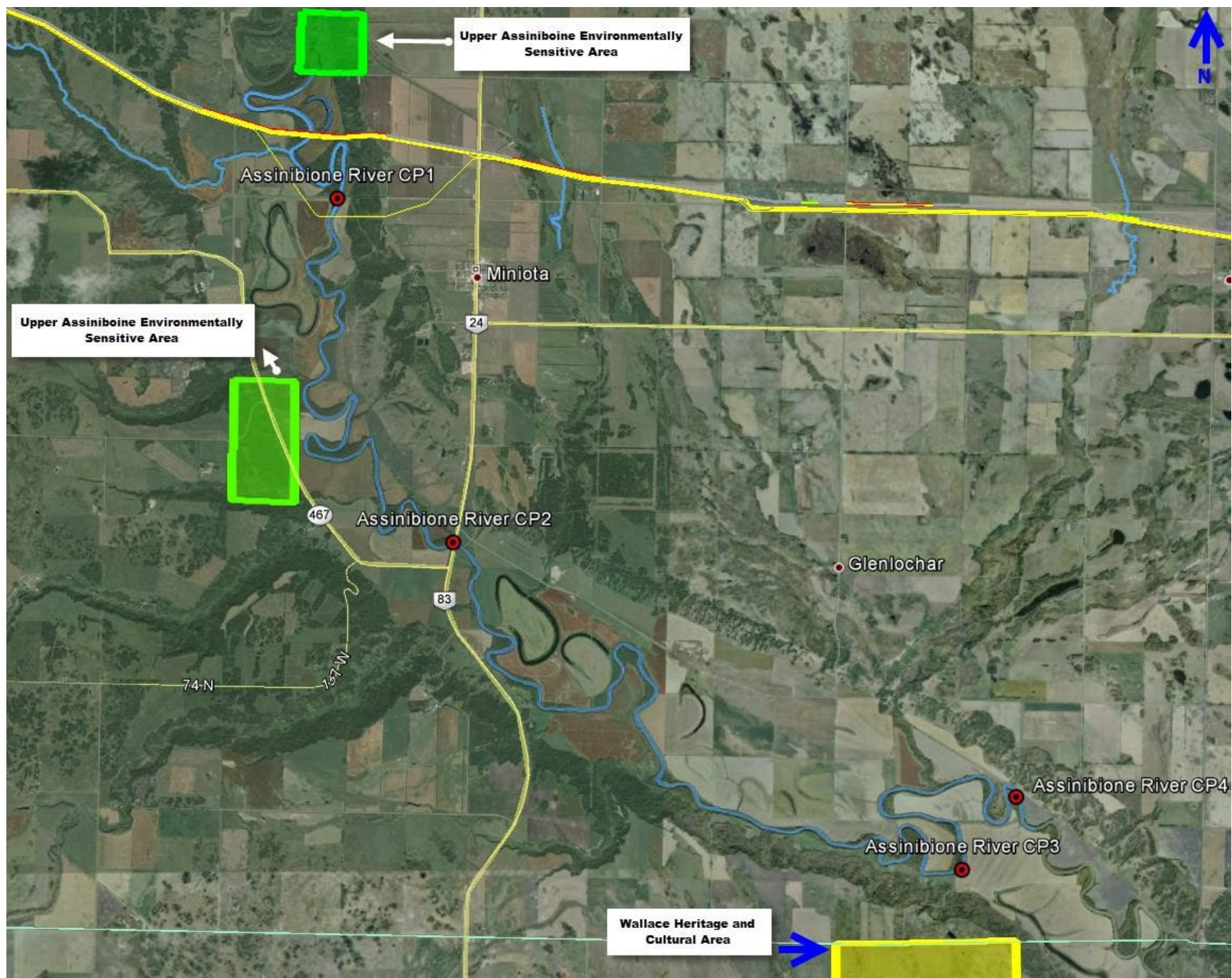


## MAPS



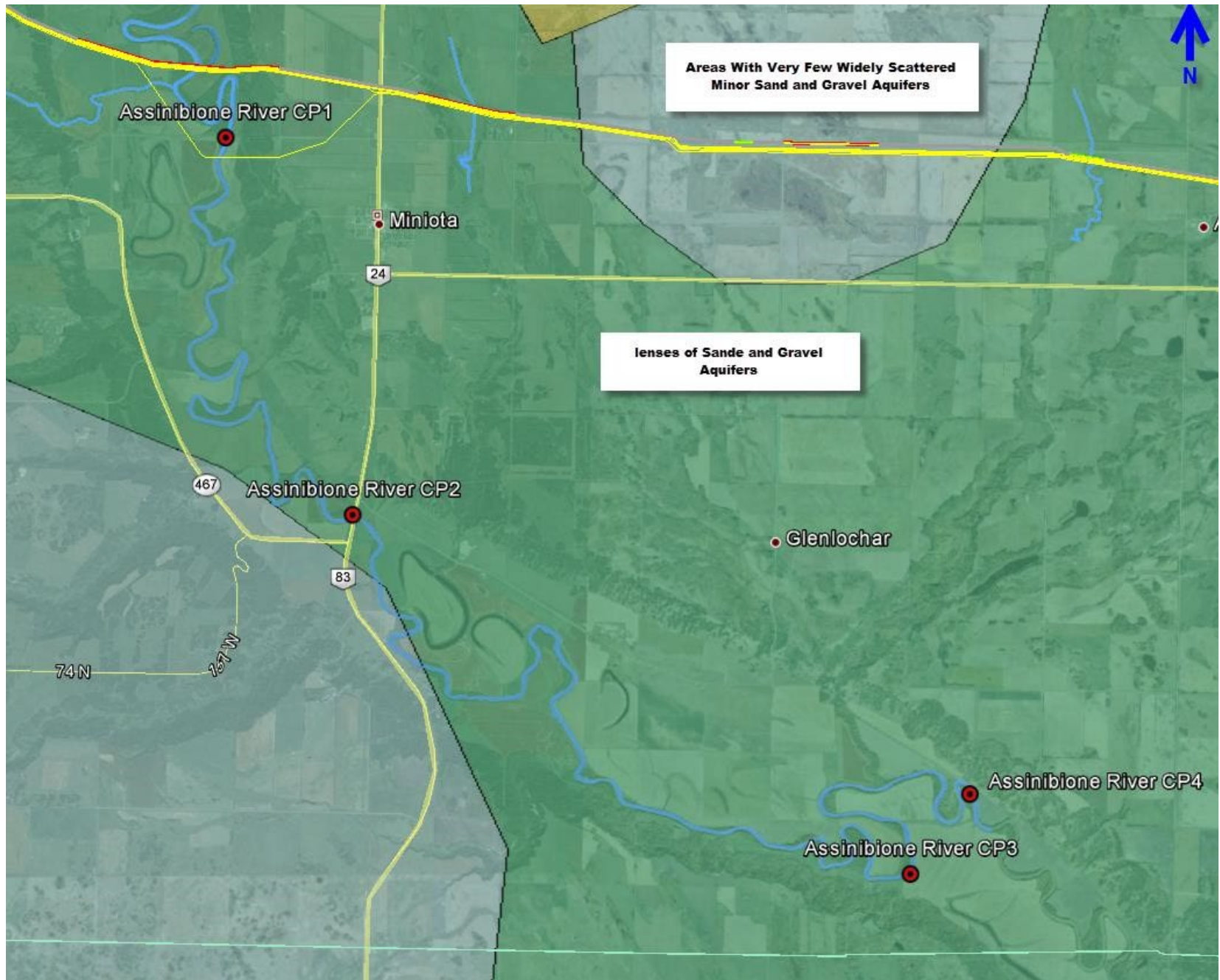
**Map 1:**  
Overview  
Map of  
entire  
Miniota  
GRP Area







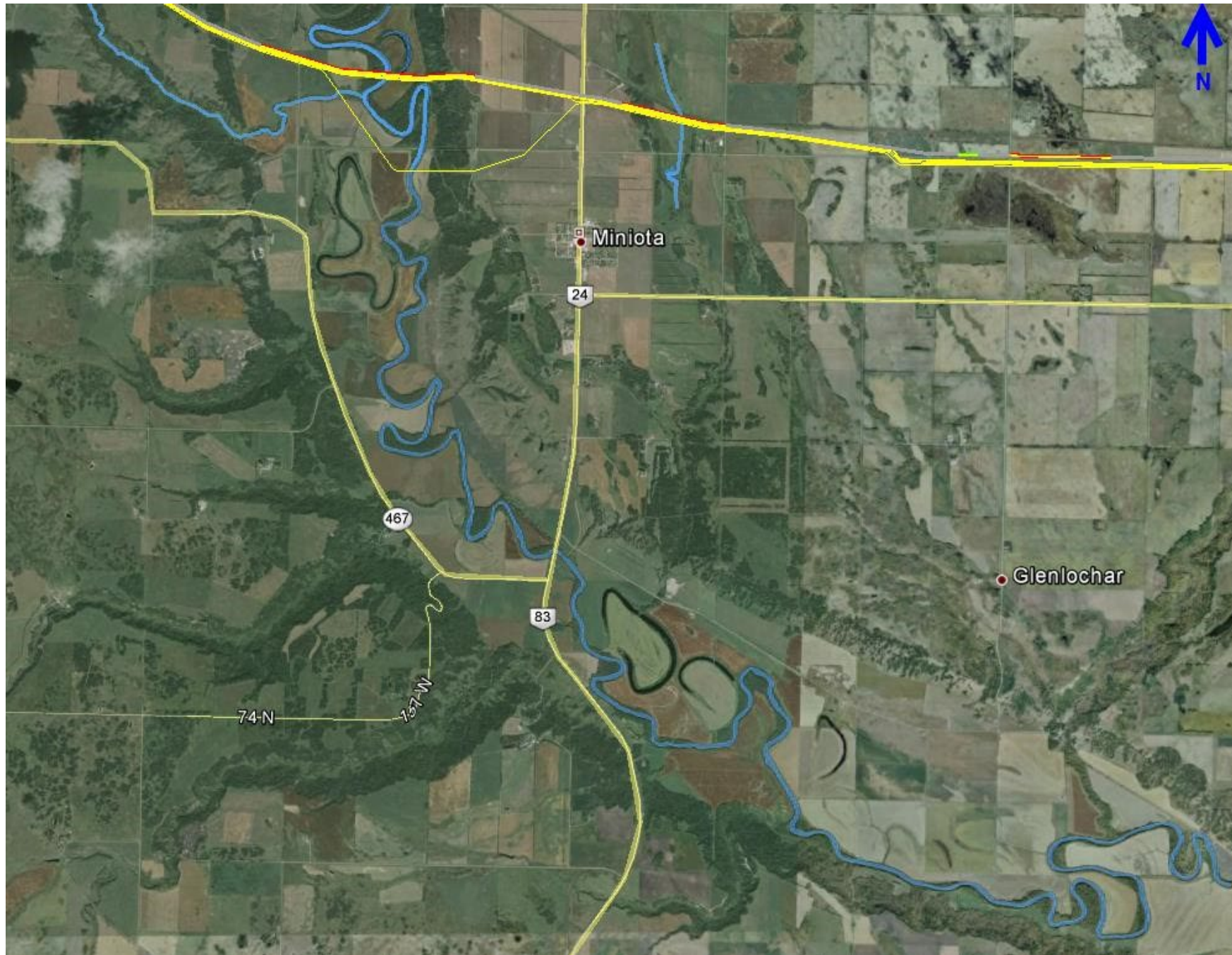
**Map 2:** identifies protected areas within the GRP



### Map 3:

displays the four  
sand and gravel  
aquifers within the  
GRP





**Map 4:** displaying the water channels within the  
GRP



## MEDICAL PLAN (ICS FORM 206)

### Transportation

Name	Location	Contact #	Paramedics On-Site (Y/N)
Miniota Rural Fire Hall	Corner of Rowan ave and HWY 83 in Miniota	204-567-3721	N
Virden Fire Department	330 11 Ave S, Virden, MB R0M 2C0	(204) 748-1304	Y
Wallace District Fire Hall	110 Railway St, Elkhorn, MB R0M 0N0	(204) 845-2043	Y
Hamiota Fire Hall	22 Willow Ave, Hamiota, MB R0M 0T0	(204) 764-3053	N

### Hospitals

Hospital Name	Address	Contact #	Travel Time		Burn Center	Heli-Pad
			Air	Ground		
Virden Health Centre	Virden Health Centre Box 400, Virden MB. R0M 2C0	(204) 748-1230				
Shoal Lake/Strathclair Health Centre	526 Mary St. Box 490 Shoal Lake, MB R0J 1Z0	(204) 759-2336				
Brandon Regional Hospital	150 McTavish Ave. East Brandon, MB R7A 2B3	(204) 578-4000				
Hamiota Health Services	177 Birch Avenue E   Hamiota, MB   R0M 0T0	(204) 764-2412				

### Special Medical Emergency Procedures

## RESOURCE REQUIREMENT MATRIX

	Calculation	Substantive Spills Avg. Probable (1% WCD) <b>Redacted 2d</b>	Large Spills Max. Most Probable (10% WCD) <b>Redacted 2d</b>	Worst Case Discharge (WCD) <b>Redacted 2d</b>
Skimmer (TDS 118)	=Volume of oil released/2,400 bbls x 2 to compensate for less 100% efficiency 1 skimmer = 2,400 bbls/day	1	4	40
Powerplant (Generator)	=1 per skimmer	1	4	40
Pump	=1 per skimmer	1	4	40
Boom (ft)	=1000 feet per recovery site	1000	4000	40,000
Vac Truck	=Volume of oil released/Vac Truck capacity/4 trips per day Vac Truck Capacity= 70bbls	2	18	171
Storage (Frac Tank)	=Volume of oil released/Frac Tank capacity x 2 Frac Tanks = 500 bbls	2	20	192

*\*this GRP is located in Response Zone 2 of the Keystone ERP. The WCD was determined by the Pipeline and Hazardous Materials Safety Administration Discharge Volume Association. Within the specific area of this GRP the WCD is **Redacted 2d***

Name/Address	Phone Number	Distance From – Center (km)	Conference Room Size	Food Service On Site (Y/N)	Internet Access (Y/N)	Notes
Miniota Community Hall, 568 Miniota Rd, Miniota, MB R0M 1M0	(204) 5673596			N	N	
Tundra Oil and Gas Place-Virden Community Recreation 170 Lyons St E, Virden, MB R0M 2C0	(204) 7482440		500ppl	Y	Y	
Comfort Inn & Suites, 380 Frontage Road West, Virden, MB, Canada, R0M 2C0	(204) 7076020			N	Y	
Virden Central Hotel	(204) 7482444			Y	Y	
Elkhorn District Community Centre #302 Foxford Avenue East.	Arena (204) 845-2551 or President Keith Orr (204) 845-2382			N	N	

## POTENTIAL STAGING AREAS

Name/Address Lat/Long	Landowner	Phone number	Size / Area	Description (Paved Gravel, Field, etc.)
--------------------------	-----------	--------------	-------------	---

**\*\* TO BE DETERMINED BY TACTICAL CONTROL POINT FORMS**

Name/Address Lat/Long	Phone Number	Distance From – Center (Miles/Kilometers)	Units (Total)	Food Service On-Site (Y/N)	Internet Access (Y/N)	Notes
Miniota Motor Inn, 7 MINIOTA RD S, Miniota, MB	(204) 567-3776			N	N	
Comfort Inn & Suites, 380 Frontage Road West, Virden, MB, Canada, R0M 2C0	(204) 707-6020			N	Y	
Virden Central Hotel	(204) 748-2444			Y	Y	
Canalta Hotel Moosomin 405 Mountain St, Moosomin, SK S0G 3N0	(306) 435-3034			N	Y	
Motel 6 405 Ogilvie St, Moosomin, SK S0G 3N0	(306) 435-3666			N	Y	



Name/Address Lat/Long	Phone Number	Distance From – Center (Miles/Kilometers)	Delivery (Y/N)	Notes
Chicken Chef, 175 Wellington St W, Virden, MB R0M 2C0	(204) 748- 3200			
A&W 360 West, Frontage Rd, Virden, MB R0M 2C0	(204) 748- 2008			
Subway 340 Frontage Rd West, Virden, MB R0M 2C0	(204) 748- 6698			
Grand Central Pizza 444 6 Ave S, Virden, MB R0M 2C0	(204) 748- 2444			
Hoysun Chinese Resturant 115 North Railway Ave E, Deloraine, MB R0M 0M0	(204) 747- 3673			





Name/Address Lat/Long	Phone Number	Distance From- Center (Miles/Kilometers)	Notes
Quantum Murray Emergency Response	(877) 378-7745		
Manitoba Producers Oil Spill Co-op	(204)748-4260		Redacted 1b
Tervita Corporation	1-800-32-SPILL (77455)		24hr North American Emergency Response Line
Euroway Industrial Services	(204) 661-0500		
Stantec Consulting			Environmental Sampling and consulting For Manitoba/Sask area contact Redacted 1b For work in Alberta contact Redacted 1b
Tetra Tech Consulting			Environmental Sampling and consulting Please contact Redacted 1b
Focus Wildlife	1-310-386-5965		
NewAlta	1-800-774-8466		24hr Emergency Response Line



## LOCAL CONTACTS

Name	Location	Phone Numbers
Hamiota RCMP	Hamiota, MB	204) 764-2732
Virden Manitoba police department	Virden, MB	(204) 748-2046
Miniota Fire Department	Corner of Rowan ave and HWY 83 in Miniota	Redacted 1b
Rural Municipality of Miniota	111 Sarah Avenue Box 70 Miniota, MB R0M 1M0	(204) 567-3683 Email: <a href="mailto:info@rmofminiota.com">info@rmofminiota.com</a>
Virden Fire Department	330 11 Ave S, Virden, MB R0M 2C0	Redacted 1b
Town Of Virden	236 Wellington Street West Virden, Manitoba R0M 2C0	Town Office: (204) 748-2440 After Hours Emergency: (204) 851-5540
Municipality of Wallace-Woodworth	154023-PR 257, Box 2200 Virden Manitoba R0M 2C0	(204) 748-1239 <a href="mailto:info@wallacewoodworth.com">info@wallacewoodworth.com</a>

## CONTROL POINTS ASSOCIATED WITH THIS PLAN

This Geographic Response Plan includes several Control Points which may be referenced for recommendation or considerations when containing or recovering released oil in the Miniota, MB area. When this plan is viewed in electronic format with access to the TransCanada intranet, the links below can be clicked to access each Control Point. When this plan is printed and viewed in paper format, the Control Points should also be printed and attached to the Plan.

## **ASSINIBOINE RIVER**

- [ASSINIBOINE RIVER SCP 1](#)
- [ASSINIBOINE RIVER TCP 1](#)
- [ASSINIBOINE RIVER TCP 2](#)
- [ASSINIBOINE RIVER TCP 3](#)
- [ASSINIBOINE RIVER TCP 4](#)