

# West Path Delivery project.

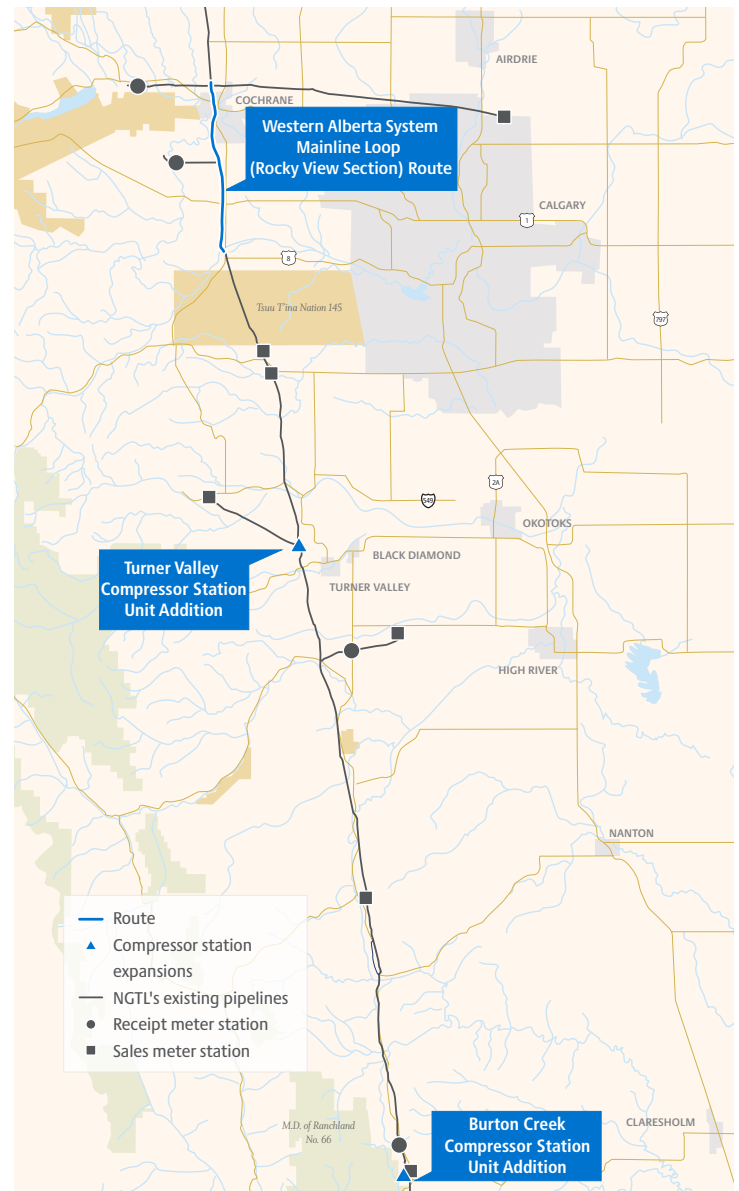
## Proposed project

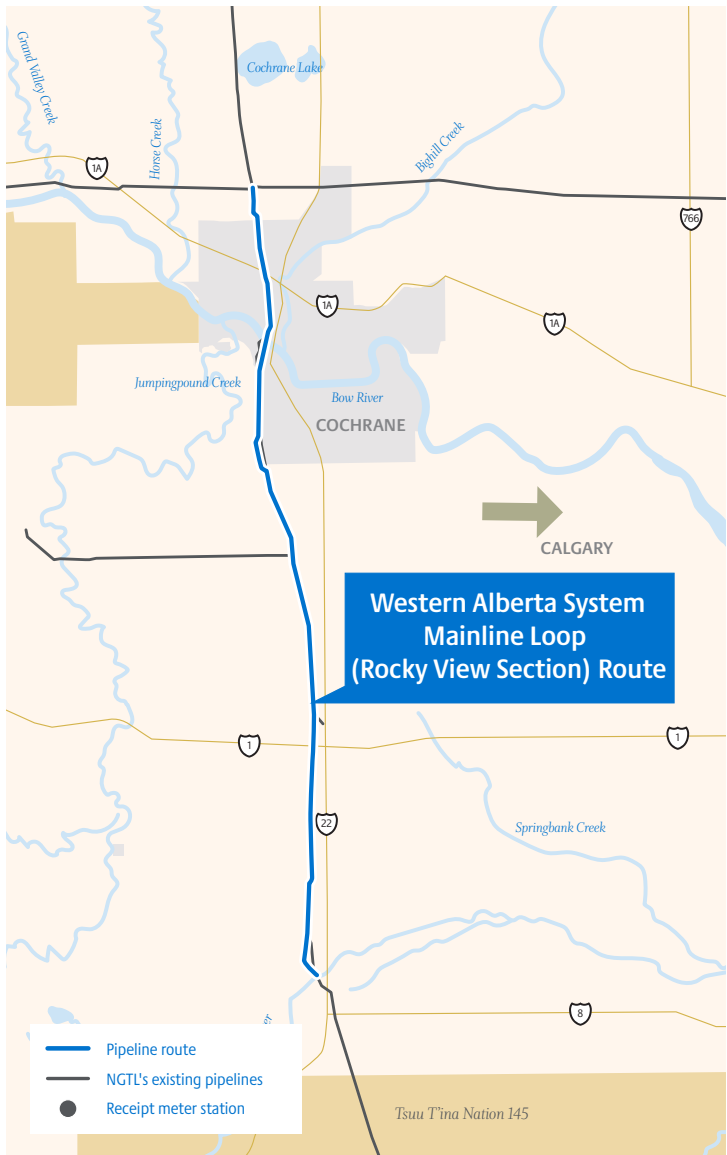
### Project details

Construction activities are scheduled to begin at compression sites in Q2 2019 and on the pipeline in Q3 2019. Construction is expected to last until Q2 2020 at select sites with all components in service by Q2 2020.

NOVA Gas Transmission Ltd. (NGTL), a wholly owned subsidiary of TC Energy is proposing to construct, own, and operate the West Path Delivery Project (Project). The Project is necessary to supply southwest Alberta and connected downstream North American markets with natural gas produced in Western Canada. The Project is comprised of three components:

1. Western Alberta System Mainline Loop (Rocky View Section);
2. Turner Valley Compressor Station Unit Addition; and
3. Burton Creek Compressor Station Unit Addition.





## Pipe expansion

When originally announced in Spring 2017, the Western Alberta System Mainline Loop (Rocky View Section) included two potential route options for the 42-inch diameter pipeline project. Following technical studies and engagement activities, NGTL has determined that Preliminary Route A is the preferred option.

The Project begins at an existing NGTL facility site within NE 16-26-04-W5M, approximately 0.8 kilometres (km) north of the town of Cochrane and ends at an existing NGTL facility site within NE 10-24-04-W5M, approximately 16.6 km west of the city of Calgary, within Rocky View County. To minimize impacts on the land and environment, the Project parallels existing buried pipelines for the majority of its length. The route runs through the town of Cochrane for approximately 6km within the utility corridor on the west side of Highway 22. The route then continues south in parallel to existing pipelines on the west side of the highway for a total of approximately 22 km.

## Facilities

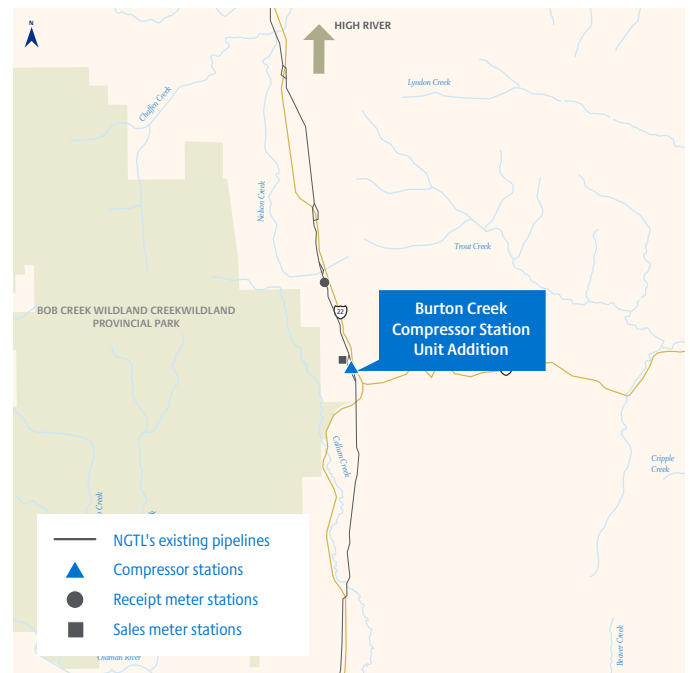
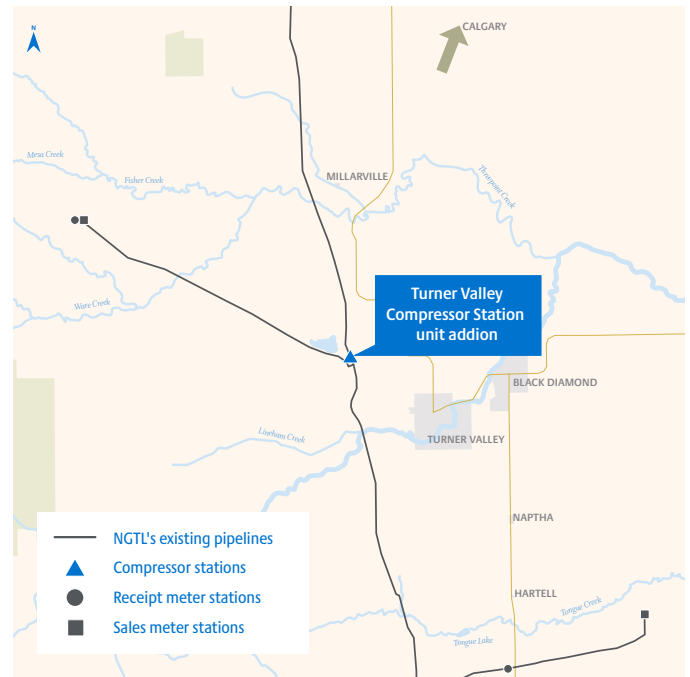
The Turner Valley Compressor Station Unit Addition and Burton Creek Compressor Station Unit Addition are expansions of existing facilities and will be comprised of:

- New unit building
- New aerial coolers
- New auxiliary buildings
- Expansion of the existing facility footprint

There will be one unit addition at the existing Turner Valley Compressor Station, located within SE 14-20-03 W5M, approximately 3 km northwest of the town of Turner Valley. A second unit addition will be at the existing Burton Creek Compressor Station, located within SW 07-12-01 W5M, approximately 39 km west of the town of Claresholm in the M.D. of Ranchland No. 66.

TC Energy has conducted extensive engineering and environmental studies, as well as engagement with stakeholders, landowners, municipalities, and Indigenous communities near the route and facilities to share information, gather input, and consider feedback as part of our decision-making process.

NGTL submitted an application with its regulator, the National Energy Board (NEB), under section 58 of the National Energy Board Act, in the first quarter of 2018 for approval to construct and operate the Project. Subject to regulatory approval, TC Energy anticipates that construction will begin in Spring 2019.



## Project schedule

|                       |  |
|-----------------------|--|
| <b>June/July 2017</b> | Began landowner, Aboriginal, and stakeholder engagement  |
| <b>June 2017</b>      | Began environmental study and technical analysis of the Project                                |
| <b>June 2017</b>      | Began field survey   |
| <b>Q1 2018</b>        | Filed a section 58 application with the NEB  |
| <b>Q2/Q3 2019</b>     | Commence pipeline and compressor station construction  |
| <b>June 2020</b>      | Anticipate pipeline and compressor station construction to be complete and placed into service |

## Community benefits

The proposed Project will offer short-term and long-term economic benefits and help strengthen the economy on a local, provincial and national level.

**Employment Opportunities** – Construction will require the services of equipment operators, welders, mechanics, truck drivers, labourers and more.

**Business Opportunities** – Pipeline construction will create demand for local goods and services including food and accommodation, hardware, industrial parts, automotive parts and servicing, fuel and more.

**Annual Revenue to Support Local Services** – Project construction will result in tax payments to municipal, provincial and federal governments. When the Project is operational, annual tax payments will help support schools and hospitals, emergency services, recreation facilities, recycling programs and other local programs vital to sustaining communities.

**Investment in Local Communities** – Through our engagement with people in the areas we work, we will identify areas where we can help build stronger, safer and more vibrant communities through local partnerships and initiatives.





## Stakeholder engagement

We will be engaging with potentially affected and interested stakeholders through various forms of communications including open houses, meetings, phone calls and emails, brochures and information packages, ads in local newspapers, a project webpage and more.

TC Energy invites stakeholders to share their questions and concerns with us so that we can provide information, follow-up on concerns, and consider feedback as part of project planning. We document the entire stakeholder engagement process including the issues raised by stakeholders and the ways we address these issues.

TC Energy is proud of the relationships we have built with our neighbours for the last 65 years. TC Energy's four core values of safety, integrity, responsibility and collaboration are at the heart of our commitment to stakeholder engagement. These values guide us in our interactions with our stakeholders.

## Aboriginal engagement

Building and maintaining relationships with Aboriginal communities near our proposed projects and existing facilities has long been an integral part of TC Energy's business.

Through ongoing information sharing, Aboriginal groups are able to share their concerns and interests with TC Energy, which we consider as part of project planning. TC Energy also strives to create opportunities that support Aboriginal group participation through community investment, scholarships and partnering with community contractors and businesses.

## Building stronger communities

TC Energy awards contracts to qualified pipeline construction contractors through a competitive bid process, and works with them to provide local employment opportunities. Building stronger communities TC Energy awards contracts to qualified pipeline construction contractors through a competitive bid process, and works with them to provide employment local opportunities. We are proud of the local partnerships we have formed in communities where we operate, and we will continue to invest in these communities.



## Environmental considerations and management of potential project effects

TC Energy is committed to protecting the environment. As part of our corporate commitment to environmental stewardship and compliance with regulatory processes, TC Energy collects and analyzes environmental information to better understand and manage the potential effects of its projects. TC Energy collects data on a number of environmental elements including, but not limited to, soils and terrain, wildlife and wildlife habitat, vegetation and wetlands, fish and fish habitat, heritage resources, air emissions and acoustic environment, and socioeconomic considerations such as land and resource use, infrastructure and services, and social and cultural well-being. This information is then considered during project planning and is used to develop the Project-specific Environmental and Socioeconomic Assessment (ESA).

With the support of technical specialists, TC Energy carefully evaluates the potential project effects and implements proven and effective environmental protection and mitigation measures to minimize or avoid those effects. While all reasonable efforts are made to avoid effects, when they do occur they are typically temporary in nature. If effects are anticipated to last beyond construction they are subject to ongoing mitigation and reclamation efforts. An Environmental Protection Plan (EPP) is developed to identify the necessary environmental protection measures to be implemented for the Project, which ensures responsible construction and results in a return to equivalent land capability.



## What to expect during construction and beyond

During construction, there will be an increase in traffic flow in and around the Project area. There will be heavy equipment onsite for use in earth moving, material handling/hauling, welding and testing. After the facilities have been constructed, there will be minimal traffic associated with ongoing operations and maintenance. Strict adherence to construction plans and commitments in the EPP will ensure that the effects of construction activities on local communities are minimized. Construction activities typically generate a certain amount of noise. TC Energy will work to meet applicable limits on noise throughout construction and ongoing operations.

Once construction has been completed, the land will be reclaimed to an equivalent land capability. Measures will be taken to prevent topsoil/surface material loss from wind and water erosion, and to establish a vegetative cover that is compatible with surrounding vegetation and land use.

Following construction, landowners will have the right to use and enjoy the right-of-way subject to the National Energy Board Damage Prevention Regulations and some restrictions in the right-of-way agreement. Pipeline crossings by agricultural vehicles and mobile equipment for normal agricultural purposes will generally be unrestricted if, for example, cultivation depth is less than 45 cm below the ground surface and provided that the loaded axle weight and tire pressures of agricultural vehicle or mobile equipment are within the manufacturer's approved limits and operating guidelines. To provide for public safety and to protect property and the environment, making a click- or call-before-you-dig and obtaining authorization from TC Energy is required prior to disturbing the ground within 30 metres of our pipelines.

## Pipeline safety

For more than 65 years, TC Energy has been a leader in the safe and reliable operation of North American energy infrastructure. From design to construction, to operations and maintenance, safety is integral to everything we do.

We use high quality steel and industry-leading welding techniques throughout our pipeline system to ensure we meet or exceed industry standards. We take additional safety precautions when the pipeline crosses roads, railways, waterways and communities.

During construction, welds are checked by x-ray and/or ultrasonic inspection methods and then we pressure-test the pipe, which is coated to protect against corrosion. We also use "smart pigs" – sophisticated inline inspection devices – to record information about the internal conditions of the pipeline.



TC Energy monitors its pipeline systems 24 hours a day, 365 days a year. Satellite technology sends data to our monitoring centre every five seconds. If a drop in pressure is detected, we immediately identify the problem area and isolate that section of the pipe remotely, closing the valves that control the flow of gas. Trained crews are dispatched by land or helicopter, depending on the location.

## Dispute resolution

TC Energy's approach to consultation and engagement with landowners, stakeholders and Aboriginal communities, is designed to inform and to address issues or disputes to reach a mutual resolution or mitigate effects. We work hard to address questions and resolve issues raised by those who are potentially affected by TC Energy's projects. We consult early and often, invite feedback, and continue to provide updates and address concerns throughout the regulatory process and the lifecycle of the project.

TC Energy's preferred method for addressing the concerns of landowners, stakeholders and Aboriginal communities is through direct and respectful discussion. Issues received or identified during these discussions are systematically tracked and followed up on to promote mutual resolution and positive interest-based outcomes. In the event that mutual resolution through this approach is not achievable, the parties may consider use of the National Energy Board's

collaborative Alternative Dispute Resolution (ADR) Process. There is also a procedure set out in the National Energy Board Act for negotiation and arbitration in the event that a landowner and NGTL are unable to agree on any matter respecting the amount of compensation payable under the Act for the acquisition of lands or for damages caused by NGTL's operations, pipelines or abandoned pipelines, or on any issue related to such compensation.

## Emergency preparedness and response

The proposed Project will be designed, built and operated in a safe and environmentally responsible manner. In the unlikely event of an emergency, our comprehensive Emergency Response Program would be activated. We train our staff to know what to do in the event of an emergency, both during construction and ongoing operations. Our staff work with landowners and area emergency responders to protect the health, safety or welfare of people, and to limit damage to property, company operations and the environment.

If there is an incident, we work closely with authorities, emergency responders and the media to ensure local residents are safe, and are aware of the situation.

**In the event of an emergency, please contact TC Energy's 24-hour emergency line at 1-888-982-7222.**

TC Energy's policies and practices will be applied to this project.



## Contact us

A representative from the project will be on-site at all times during construction, and will be a primary point of contact should any concerns arise.

We invite you to contact us with any questions or comments you have about the project

### Community Relations

**Phone** 1-844-551-0054

**Email** [westpathdelivery@tcenergy.com](mailto:westpathdelivery@tcenergy.com)  
[www.TCenergy.com/WestPath](http://www.TCenergy.com/WestPath)

or write to us

TC Energy  
450 – 1 Street S.W. Calgary, AB  
Canada, T2P 5H1

If you would like further information regarding the National Energy Board's approval process, we would be pleased to provide you with information or you can contact the regulator directly

### National Energy Board

Suite 210, 517 – 10 Avenue S.W., Calgary, AB  
Canada, T2R 0A8

**Phone** 1-800-899-1265

**Email** [info@neb-one.gc.ca](mailto:info@neb-one.gc.ca)  
[www.neb-one.gc.ca](http://www.neb-one.gc.ca)

*TC Energy periodically provides project information beginning at the early stages of project development, continuing throughout the life of the project. The information provided is intended to give people the opportunity for meaningful input. Please be aware that as projects progress, new information becomes available and details may change from the time of this printing. Please contact TC Energy (using the contact information listed above) with any questions.*