

Grande Prairie Mainline Loop No. 4 (Valhalla North Section)

British Columbia

Alberta

Saskatchewan

FORT McMURRAY


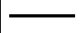

GRANDE PRAIRIE

EDMONTON

CALGARY

MEDICINE HAT

Legend

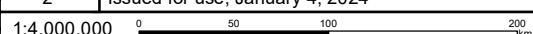
-  Pipeline
-  Existing TC Energy Pipeline
-  City / Town



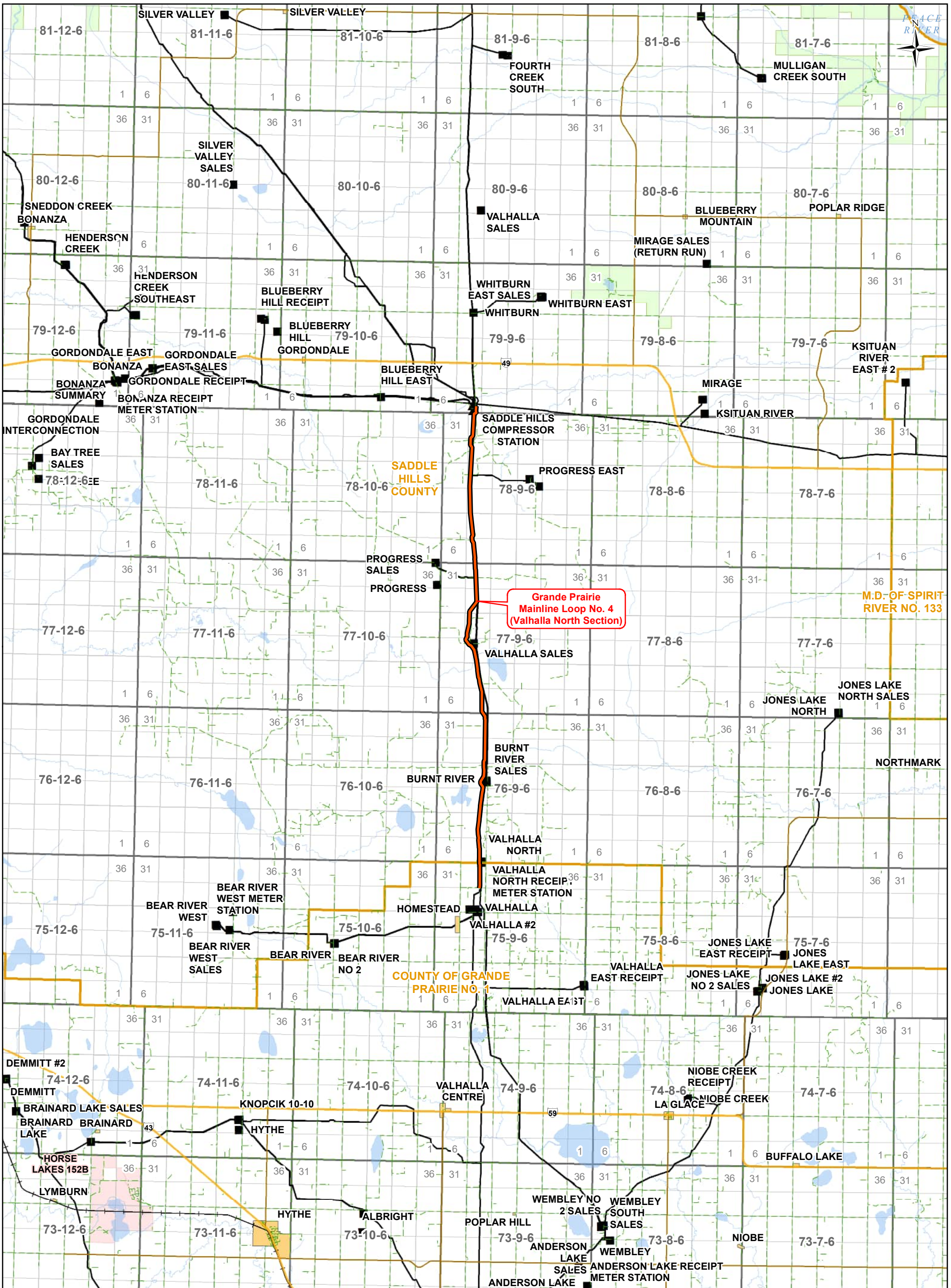
**GPML Loop No.4 (Valhalla North Section)**

Global

| REVISION | DESCRIPTION                     |
|----------|---------------------------------|
| 2        | Issued for use, January 4, 2024 |



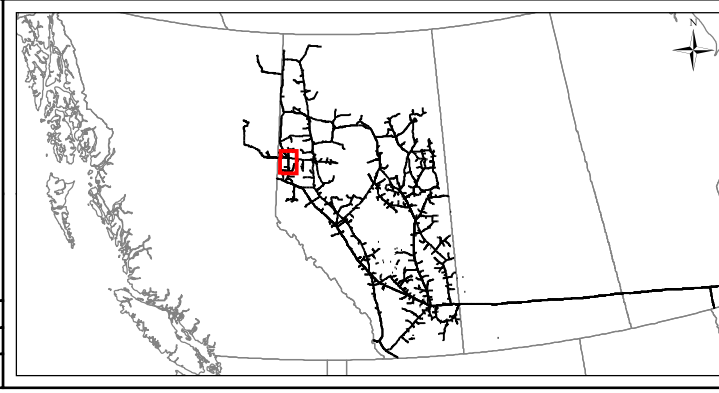
|   |  |
|---|--|
| Location:<br>55.675, -119.364           | Coordinate System:<br>NAD 1983 CSRS UTM Zone 11N |
| Route Reference: 02069-MSI-G-SH-0002_03 | Sheet 1 of 4                                     |
| Document Control: 02069-MSI-G-MP-0011   | Jan 4, 2024                                      |



Grande Prairie  
Mainline Loop No. 4  
(Valhalla North Section)

- Legend**
- Pipeline
  - Primary Highway
  - Secondary Highway
  - Minor Roads
  - Railways
  - River / Creek
  - Waterbody
  - Compressor Station
  - Meter Station
  - TC Energy Pipeline
  - City / Town
  - Parks / Protected Areas
  - First Nations
  - Metis Settlement
  - Military Reserve
  - County

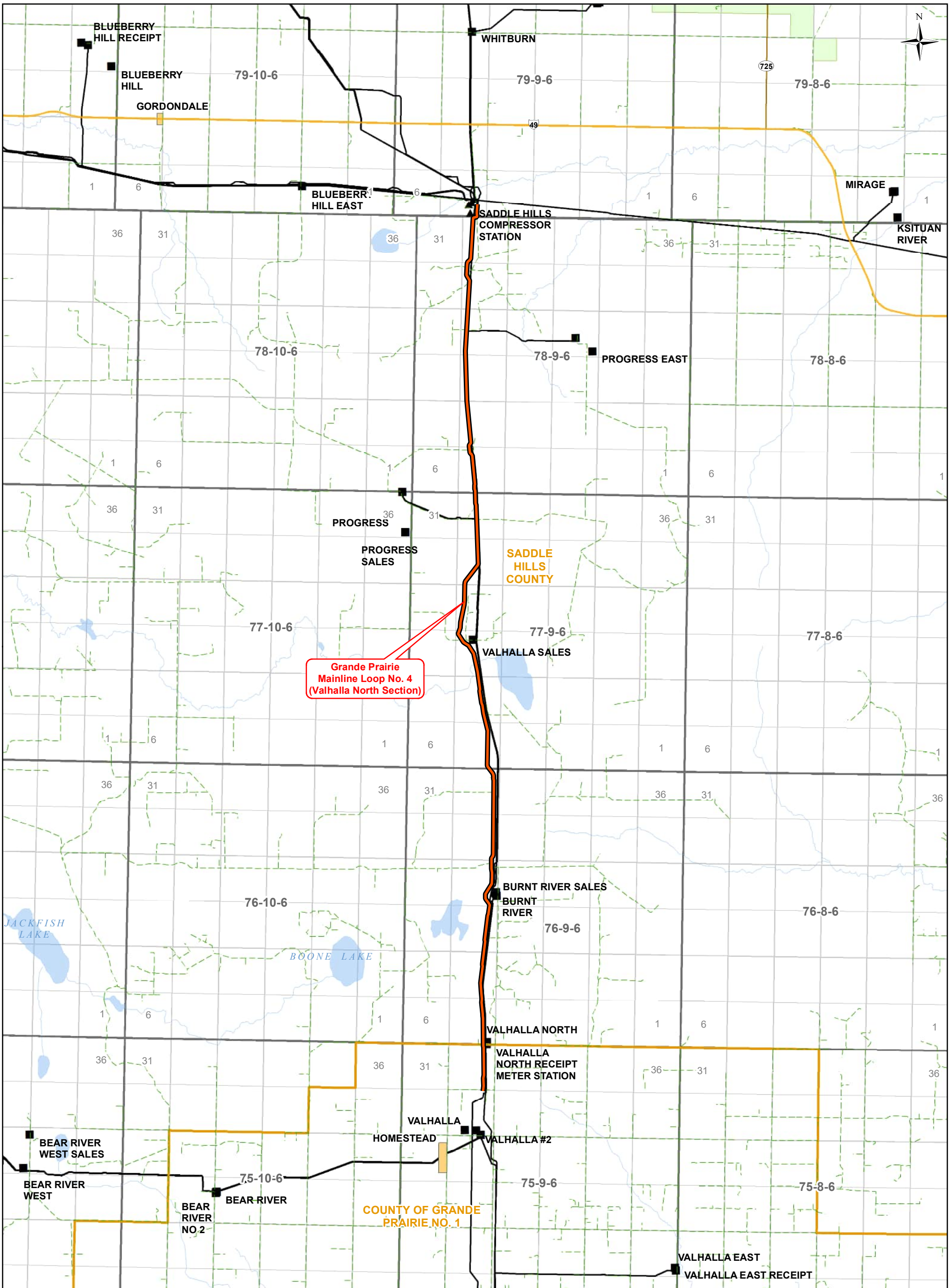
| REVISION | DESCRIPTION                     |
|----------|---------------------------------|
| 2        | Issued for use, January 4, 2024 |



**GPML Loop No.4  
(Valhalla North Section)**

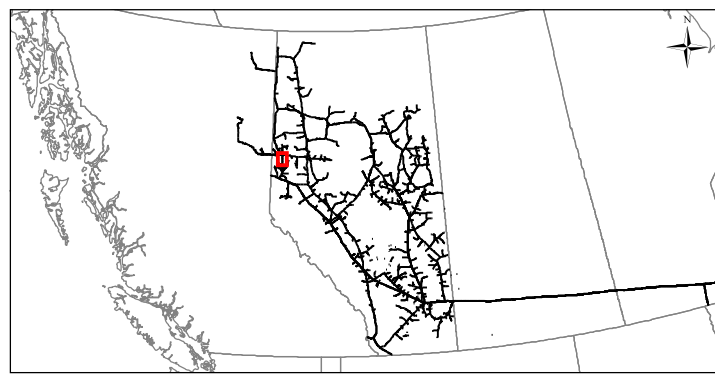
Regional

|   |  |
|---|--|
| Location:<br>55.675, -119.364           | Coordinate System:<br>NAD 1983 CSRS UTM Zone 11N |
| Route Reference: 02069-MSI-G-SH-0002_03 | Sheet 2 of 4                                     |
| Document Control: 02069-MSI-G-MP-0011   | Jan 4, 2024                                      |



Grande Prairie  
Mainline Loop No. 4  
(Valhalla North Section)

- |                    |                   |                         |
|--------------------|-------------------|-------------------------|
| Pipeline           | Primary Highway   | City / Town             |
| Compressor Station | Secondary Highway | Parks / Protected Areas |
| Meter Station      | Minor Roads       | First Nations           |
| Existing Pipeline  | Railways          | Metis Settlement        |
| TC Energy Pipeline | River / Creek     | Military Reserve        |
|                    | Waterbody         | County                  |



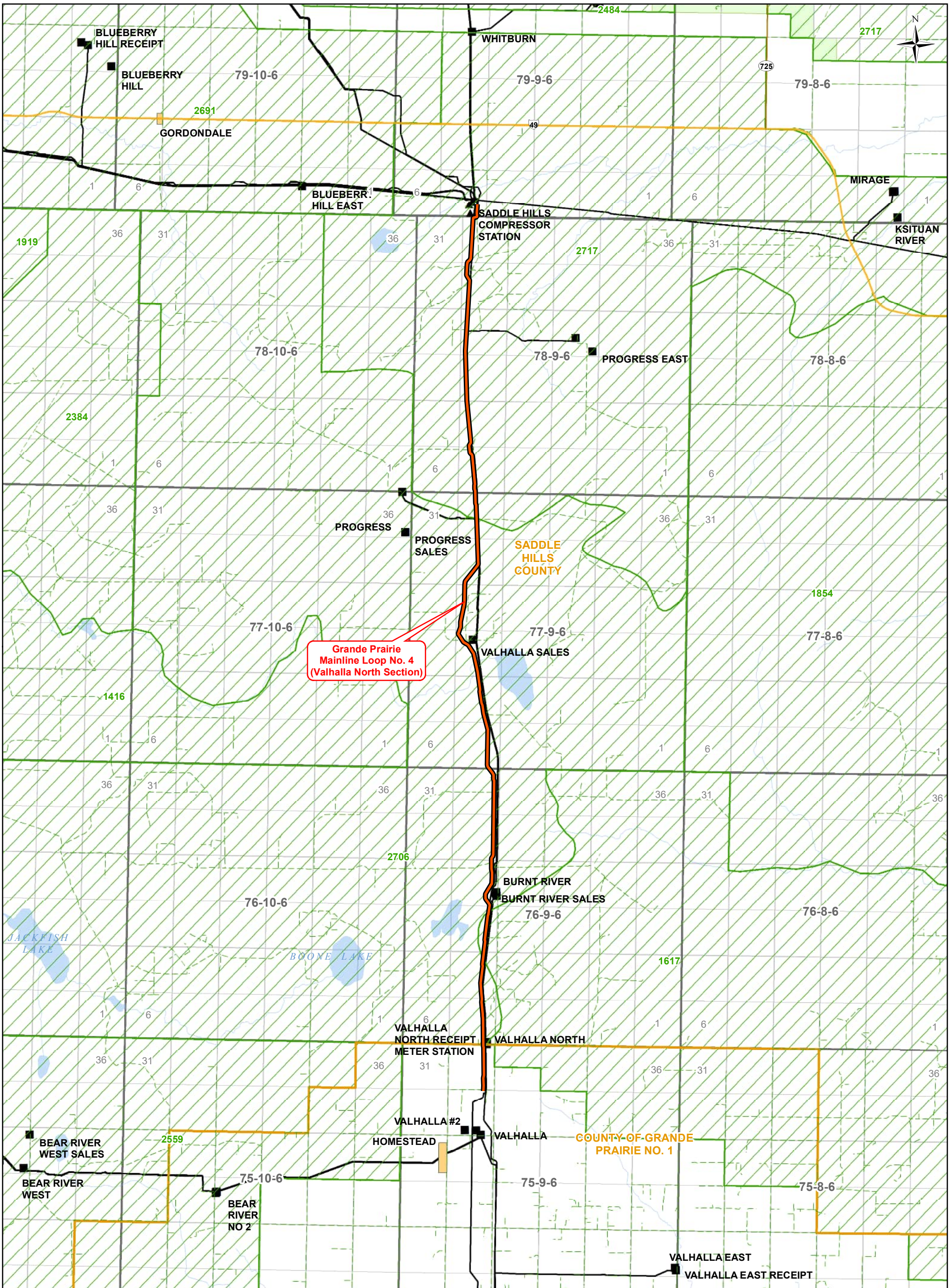
**GPML Loop No.4  
(Valhalla North Section)**

Detail

|   |  |
|---|--|
| Location:<br>55.675, -119.364           | Coordinate System:<br>NAD 1983 CSRS UTM Zone 11N |
| Route Reference: 02069-MSI-G-SH-0002_03 | Sheet 3 of 4                                     |
| Document Control: 02069-MSI-G-MP-0011   | Jan 4, 2024                                      |

| REVISION | DESCRIPTION                     |
|----------|---------------------------------|
| 2        | Issued for use, January 4, 2024 |





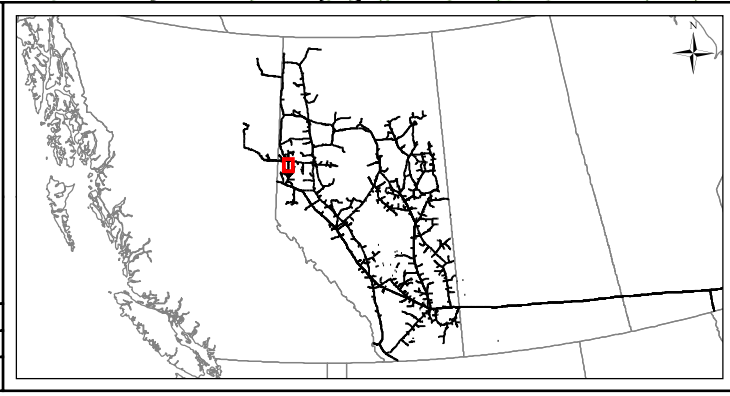
**Grande Prairie  
Mainline Loop No. 4  
(Valhalla North Section)**

**Legend**

- Pipeline
- Compressor Station
- Meter Station
- Existing Pipeline
- TC Energy Pipeline
- Primary Highway
- Secondary Highway
- Minor Roads
- Railways
- River / Creek
- Waterbody
- City / Town
- Parks / Protected Areas
- First Nations
- Metis Settlement
- Military Reserve
- County
- Trapper Boundary

| REVISION | DESCRIPTION                     |
|----------|---------------------------------|
| 2        | Issued for use, January 4, 2024 |

1:125,000



**GPML Loop No.4  
(Valhalla North Section)**

Trapper

|   |  |
|---|--|
| Location:<br>55.675, -119.364           | Coordinate System:<br>NAD 1983 CSRS UTM Zone 12N |
| Route Reference: 02069-MSI-G-SH-0002_03 | Sheet 4 of 4                                     |
| Document Control: 02069-MSI-G-MP-0011   | Jan 4, 2024                                      |