



450 – 1 Street SW  
Calgary, Alberta T2P 5H1

Tel: (403) 796-4905  
Fax: (403) 920-2347  
Email: elaine\_liddiard@tcenergy.com

May 12, 2023

Filed Electronically

Canada Energy Regulator  
Suite 210, 517 Tenth Avenue SW  
Calgary, AB T2R 0A8

**Attention: Ramona Sladic, Secretary of the Commission**

Dear Ramona Sladic:

**Re: NOVA Gas Transmission Ltd. (NGTL)  
Grand Prairie Mainline Loop No. 4 (Valhalla North Section) and Berland River  
Compressor Station C3 Unit Addition (Project)  
Project Notification**

In accordance with the Canada Energy Regulator (CER) Filing Manual, attached is the Project Notification for the Project.

If the CER requires additional information with respect to this filing, please contact me by phone at (403) 796-4905 or by email at elaine\_liddiard@tcenergy.com.

Yours truly,  
**NOVA Gas Transmission Ltd.**

*Original signed by*

Elaine Liddiard  
Regulatory Project Manager  
Regulatory Facilities, Canadian Natural Gas Pipelines

Enclosure

## 1.1 PROJECT NOTIFICATION FORM TO THE CANADA ENERGY REGULATOR

### 1.2 PROPOSED PROJECT

<b>Company Legal Name:</b>	NOVA Gas Transmission Ltd.
<b>Project Name:</b>	Grand Prairie Mainline (GPML) Loop No. 4 (Valhalla North Section) and Berland River Compressor Station (CS) C3 Unit Addition (Project)
<b>Expected Application Submission Date:</b>	July 20, 2023

### 1.3 COMPANY CONTACT

<b>Project Contact:</b>	Elaine Liddiard
<b>Email Address:</b>	elaine_liddiard@tcenergy.com
<b>Address:</b>	450 – 1 Street SW Calgary, AB T2P 5H1
<b>Phone:</b>	(403) 796-4905
<b>Fax:</b>	(403) 920-2347

### 1.4 PROJECT DETAILS

The Project is comprised of two components, the Grande Prairie Mainline (GPML) Loop No. 4 (Valhalla North Section) and the Berland River Compressor Station (CS) C3 Unit Addition. The following information provides the proposed location, scope, timing, and duration of construction for the Project.

The proposed Valhalla North Section (Valhalla) component of the Project is located in the province of Alberta within the counties of Saddle Hills and Grande Prairie No. 1, and includes the installation of approximately 33 km of 48-inch (NPS 48) diameter pipeline starting at the existing NGTL Saddle Hills CS within SE 05-079-09 W6M, approximately 81 km northwest of Grande Prairie and ties into an existing NGTL valve site within NE 29-075-09 W6M, approximately 54 km northwest of Grande Prairie.

The Valhalla component will be located on 95% Crown land and 5% freehold land and will require the acquisition of approximately 98 ha of new land. Approximately 78 ha of temporary workspace (TWS) is anticipated to be required.

Anticipated timelines for Valhalla are as follows:

**Start construction:** 11/2024

**Complete construction:** 03/2026

**Planned in-service date:** 04/2026

The proposed Berland River CS C3 Unit Addition (Berland) component of the Project will consist of the installation of a new 30 MW Electric Motor Driven (EMD) unit addition with aerial coolers, unit and auxiliary buildings, yard piping, valves, and other auxiliary equipment immediately adjacent to the existing NGTL Berland River CS.

The Berland component will be located entirely on Crown land (new and existing dispositions) in NE 25-058-24 W5M, approximately 83 km northwest of Edson in the Municipal District of Greenview No. 16 and will require the acquisition of approximately 4 ha of new land with an overlap of 1 ha of existing NGTL Department Pipeline Agreement. Approximately 4 ha of TWS is anticipated to be required.

Anticipated timelines for Berland are as follows:

**Start construction:** 09/2024

**Complete construction:** 03/2026

**Planned in-service date:** 04/2026

## 1.5 PROJECT MAP(S)

Please see Attachment 1 – Global and Regional Maps.

## 1.6 POTENTIALLY AFFECTED PARTIES

The following tables provide a preliminary list of potentially affected Indigenous<sup>1</sup> groups and other potentially affected persons and communities for the Project, based upon the guidance for Step 1 in the Canada Energy Regulator’s (CER’s) Early Engagement Guide.

### Landowners/Land Users and Other Potentially Affected Persons

Potentially Affected Party	Organization Name and/or Number of Potentially Affected Party	
	Valhalla North Section	Berland River CS C3 Unit Addition
Landowner(s) - Freehold	2	0
Landowner(s) - Crown	1 - Alberta Environment and Protected Areas (AEPA)	1 - AEPA
Occupant(s)	1 - Private	0
Adjacent/Nearby Landowner(s)	8	0
Land User(s) (Trappers and Industry Parties etc.)	28	6

<sup>1</sup> “Indigenous” has the meaning assigned by the definition of Aboriginal peoples of Canada in subsection 35(2) of the Constitution Act, 1982: (2) In this Act, “aboriginal peoples of Canada” includes the Indian, Inuit and Métis peoples of Canada.

**Potentially Affected Indigenous Groups Identified\***

<b>Indigenous Group</b>		<b>Valhalla North Section</b>	<b>Berland River CS C3 Unit Addition</b>
First Nations, Treaty 6	Alexander First Nation	X	X
	Alexis Nakota Sioux Nation		X
	Enoch Cree Nation	X	X
	Ermineskin Cree Nation	X	X
	Kehewin Cree Nation		X
	Louis Bull Tribe		X
	Montana First Nation		X
	O'Chiese First Nation	X	X
	Paul First Nation		X
	Saddle Lake Cree Nation		X
	Samson Cree Nation		X
	Sunchild First Nation		X
	Whitefish Lake (Goodfish) First Nation 128	X	X
First Nations, Treaty 7	Stoney Nakoda Nations	X	X
	Tsuut'ina Nation	X	X
First Nations, Treaty 8	Aseniwuche Winewak Nation of Canada	X	X
	Doig River First Nation	X	X
	Driftpile Cree Nation	X	X
	Duncan's First Nation	X	
	Horse Lake First Nation	X	X
	Sturgeon Lake Cree Nation	X	X
Non-Treaty First Nations	Sucker Creek First Nation	X	X
	Asini Wachi Nehiyawak Traditional Band		X
	Foothills First Nation	X	X
	Foothills Ojibway Society		X
	Kelly Lake Cree Nation	X	X
	Kelly Lake First Nation	X	X
	Marlboro Community Association		X
	Mountain Cree (Smallboy Camp)		X
	Nakcowinewak Nation of Canada	X	X
Nose Creek Community	X	X	

**Potentially Affected Indigenous Groups Identified\* (cont'd)**

Indigenous Group		Valhalla North Section	Berland River CS C3 Unit Addition
Métis Organizations, Settlements, and Locals	Buffalo Lake Métis Settlement	X	X
	Cadotte Lake Métis Nation Association	X	X
	East Prairie Métis Settlement	X	X
	Elizabeth Métis Settlement	X	X
	Fishing Lake Métis Settlement	X	X
	Gift Lake Métis Settlement	X	X
	Grande Cache Métis Local 1994 (Mountain Métis Nation Association)	X	X
	Kelly Lake Métis Settlement Society (Apetokosan Nation)	X	X
	Kikino Métis Settlement	X	X
	Lac Ste. Anne Métis Community Association	X	X
	Métis Nation of Alberta	X	X
	Métis Nation of Alberta Region 4	X	X
	Métis Nation of Alberta Region 6	X	
	Métis Settlements General Council	X	X
	Paddle Prairie Métis Settlement	X	X
Peavine Métis Settlement	X	X	
*Note: This list includes the CER's preliminary list of potentially impacted Indigenous groups for the Project, received on December 22, 2022.			

**Government Authorities**

Potentially Affected Party	Organization Name and/or Number of Potentially Affected Party	
	Valhalla North Section	Berland River CS C3 Unit Addition
Municipalities and/or Counties	<ul style="list-style-type: none"> <li>Saddle Hills County, engaged with eleven regional elected officials and staff.</li> <li>The County of Grande Prairie No. 1, engaged with 7 regional elected officials and staff.</li> </ul>	<ul style="list-style-type: none"> <li>The Municipal District of Greenview No. 16, engaged with 5 regional elected officials and staff.</li> </ul>
Federal and/or Provincial Government(s)	<ul style="list-style-type: none"> <li>Alberta Culture (AC)</li> <li>AEPA</li> <li>Alberta Agriculture and Forestry</li> <li>Alberta Energy Regulator (AER)</li> <li>Environment and Climate Change Canada (ECCC)</li> <li>Department of Fisheries and Oceans Canada (DFO)</li> <li>Member of Parliament, Grande Prairie-Mackenzie</li> <li>Member of Legislative Assembly, Grande Prairie-Wapiti</li> <li>Member of Legislative Assembly, Central Peace-Notley</li> </ul>	<ul style="list-style-type: none"> <li>AC</li> <li>AEPA</li> <li>Alberta Agriculture and Forestry</li> <li>AER</li> <li>ECCC</li> <li>Member of Parliament, Yellowhead</li> <li>Member of Legislative Assembly, West Yellowhead</li> </ul>

**1.7 POTENTIAL IMPACTS RELATED TO THE PROJECT**

The following potential impacts related to the Project have been identified:

Project Activity	Potential Impacts
Construction	<ul style="list-style-type: none"> <li>Temporary workspace and access</li> <li>Noise and visual impacts</li> <li>Traffic management</li> <li>Watercourse crossings</li> </ul>
Environmental Matters	<ul style="list-style-type: none"> <li>Change to wildlife habitat and Species at Risk</li> <li>Watercourse and wetland crossings</li> <li>Land reclamation and weed management</li> <li>Cumulative project effects</li> </ul>
Community Matters	<ul style="list-style-type: none"> <li>Traffic management</li> <li>Potential effects on community infrastructure and resources</li> <li>Potential effects on recreational land user groups</li> </ul>
Indigenous Matters	<ul style="list-style-type: none"> <li>Potential effects on Indigenous rights and interests</li> <li>Potential effects on traditional land and resource use</li> </ul>

Project Activity	Potential Impacts
Economic Matters	<ul style="list-style-type: none"> <li>• Local and Indigenous community contracting and hiring opportunities</li> </ul>
Land Matters	<ul style="list-style-type: none"> <li>• Timing of land acquisition</li> <li>• Planned land use after construction</li> </ul>
Emergency Response	<ul style="list-style-type: none"> <li>• Pipeline integrity and monitoring</li> <li>• Emergency preparedness and response.</li> </ul>

## 1.8 ISSUES RAISED BY POTENTIALLY AFFECTED PARTIES AND STATUS

NGTL’s approach to ongoing consultation and engagement with stakeholders, landowners, and Indigenous groups is designed to inform and to address issues or disputes to reach a mutual resolution or mitigate effects. NGTL’s preferred method for addressing the concerns of stakeholders, landowners, and Indigenous groups is through direct and respectful discussion. Issues received or identified during these discussions are systematically tracked and followed up on to promote mutual resolution and positive interest-based outcomes.

### Municipal Groups

NGTL’s initial engagement with potentially affected municipalities on Valhalla began in November 2019 and was put on hold in March 2021. NGTL’s engagement with municipal groups on the Project, including reinitiating engagement on Valhalla and initial engagement on Berland began on January 13, 2023, by providing a Project notification package to Municipalities, Cities, Towns, Chambers, and Synergy Groups in the area. Included as links and/or attachments with the Project notification packages were:

- project introduction letter, including Project Fact Sheet, overview maps
- CER brochure: *The CER, Energy Projects, and You*

In addition to sharing the information noted above, engagement to date has also included council presentations, one-on-one meetings, telephone calls, and emails to review Project specifics and address any questions. TC Energy Corporation (TC Energy) planned on attending the Wapiti Area Synergy Partnership Open House on May 16, 2023, to provide information on the Project and answer any questions. The Project advertised its attendance at the Open House via Facebook, Twitter, radio, and newspapers. On May 12, 2023, the Open House was postponed, due to the wildfire situation in the Grande Prairie area and to respect the communities in the area with its current emergency needs. TC Energy plans to host an Open House at a later date in June or July when the communities’ capacity is available.

TC Energy continues to be available to all stakeholders for continued engagement. NGTL notes that during early engagement, no concerns have been raised.

### **Impacted Landowners**

NGTL's initial engagement with directly and indirectly impacted landowners on Valhalla began in November 2019 and was put on hold in March 2021. NGTL's engagement with landowners on the Project, including reinitiating engagement on Valhalla and initial engagement on Berland began on January 13, 2023, by providing a Project notification package. Included as links and/or attachments with the Project notification packages were:

- project introduction letter, including Project Fact Sheet, overview maps
- CER brochure: *The CER, Energy Projects, and You*

In addition to sharing the information noted above, engagement to date has also included some telephone calls, and emails, primarily related to survey works and Open House invitations.

During early engagement, no concerns have been raised.

More details about land acquisition timelines and process details are included in Section 1.9 below.

### **Indigenous Groups**

NGTL's initial engagement with potentially affected Indigenous groups for Valhalla began in November 2019 and was put on hold in March 2021. NGTL's engagement with Indigenous groups on the Project, including reinitiating engagement on Valhalla and initial engagement on Berland began on January 13, 2023, by providing a Project notification package to Indigenous groups identified by NGTL and the CER as potentially affected by the Project. Included as links and/or attachments with the Project notification packages were:

- project introduction letter, including Project Fact Sheet, overview maps, and KMZ files
- TC Energy brochures: Indigenous Relations Policy; Engaging with our Stakeholders; Your Safety, Our Integrity; Contracting and Employment; and Construction Employment Opportunities
- CER brochure: *The CER, Energy Projects, and Indigenous Peoples*

In addition to sharing the information noted above, engagement to date has also included follow-ups, one-on-one meetings, telephone calls, and emails with Indigenous groups to review Project specifics and address any questions.

The following table provides a list of the issues or concerns raised by potentially affected Indigenous groups with respect to the Project to date.



**Valhalla North Section**

Description of Issue	Status of Resolution
Potential effects on traditional land and resource use	NGTL is working with the interested Indigenous groups to schedule a review of the proposed route and facilitate field studies for areas of interest (or re-validate and update traditional knowledge (TK) study results in instances where groups conducted TK studies on the Valhalla North Section during the previous engagement undertaken from November 2019 - March 2021). As engagement continues, NGTL will provide its responses to these concerns and proposed mitigation measures and offer to answer questions or discuss any remaining concerns.
Cumulative effects	NGTL will continue to engage with Indigenous groups to learn more about concerns and follow up with appropriate mitigations. Cumulative effects will be considered in the Project Environmental and Socio-Economic Assessment (ESA).
Potential effects on archaeological sites	NGTL has conducted a pre-construction archaeological assessment in accordance with the Alberta <i>Historical Resources Act</i> requirements for the Project as determined by AC. An Historical Resource Approval has been obtained from AC and an amendment will be sought for any minor adjustments in footprint prior to proceeding with construction activities. Should potential impacts on archaeological resources be identified, mitigation measures will be developed in consultation with AC and included in the Project-specific Environmental Protection Plan (EPP). In addition, in the event of unanticipated discovery during construction, NGTL will implement the Cultural Resource Discovery Contingency Plan within the EPP, as appropriate.

**Berland River CS C3 Unit Addition**

Description of Issue	Status of Resolution
Potential effects on traditional land and resource use	NGTL is working with the interested Indigenous groups to schedule a review of the proposed unit addition location and facilitate site visits as applicable. As engagement continues, NGTL will provide its responses to these concerns and proposed mitigation measures and offer to answer questions or discuss any remaining concerns.
Cumulative effects	NGTL will continue to engage with Indigenous groups to learn more about concerns and follow up with appropriate mitigations. Cumulative effects will be considered in the Project ESA.

**1.9 DESCRIPTION OF LAND ACQUISITION PROCESS**

Valhalla - NGTL will acquire the required Crown land rights using the Department Pipeline Agreement (DPL), Department Pipeline Installation Lease (DPI), and

Department License of Occupation (DLO) dispositions, beginning in Q3 2023. NGTL will apply to AEPA for Crown land rights through the Electronic Disposition System (EDS) for the pipeline and access rights, where required. NGTL will continue ongoing discussions with disposition holders, forest management agreement (FMA) holders, occupants, and landowners to finalize any necessary agreements/consents.

NGTL will acquire the required freehold land rights using right-of-way (ROW) agreements, beginning in Q3 2023. NGTL will submit ROW agreements to Alberta Land Titles to register freehold land rights acquired through ROW for the pipeline rights. NGTL will continue ongoing discussions with occupants and landowners to finalize any necessary agreements/consents.

NGTL will obtain Temporary Field Authorization (TFA) for all TWS on Crown land and utilize a TWS Agreement on freehold lands.

Berland - NGTL will acquire the required Crown land rights using a DPI agreement, beginning in Q3 2023. NGTL will apply to AEPA for Crown land rights through EDS for expansion rights to the compressor station and extend the term of an existing Department Miscellaneous Lease (DML) for campsite rights. NGTL will continue ongoing discussions with disposition holders, FMA holders, occupants, and landowners to finalize any necessary agreements/consents.

NGTL confirms that the land acquisition process for the Project will comply with the applicable sections of the *Canadian Energy Regulator Act* (CER Act), including sections 321 through 322. The Crown stakeholders and the landowners will be notified of the timing of the section 214 application and their ability to participate in the CER process, consistent with the information contained in the section 322 notice. NGTL will obtain TFAs for TWS.

To date, no issues or concerns have been raised, with respect to the land acquisition. NGTL will acquire the necessary land rights prior to the scheduled commencement of construction.

#### **1.10 DESCRIPTION OF ROUTE/SITE SELECTION METHODOLOGY**

For both pipeline route and facility site selection, NGTL employs a systematic and thorough route selection process using a variety of tools, such as:

- desktop studies
- helicopter reconnaissance
- ground verification and field surveys
- engineering, geotechnical, and environmental field studies

This selection process considers the objectives of minimizing the total route length or land requirements, meeting applicable regulatory requirements and reducing the Project's footprint and potential environmental effects, while carefully assessing overall cost and constructability, and meeting customer demands. Feedback received through the early engagement phase with stakeholders, landowners, and Indigenous groups, informs the assessment of the proposed route location and sites.

### **Pipeline Routing**

Specific to pipeline route selection, NGTL's route selection process considers and balances several criteria when evaluating route options, including the following, where practical or feasible:

- minimizing length to reduce the Project's footprint and overall potential environmental and socio-economic effects
- ensuring pipeline sections and facilities are economical to construct and operate
- paralleling existing linear disturbances
- ensuring public safety
- minimizing the number, and ensuring the construction feasibility, of watercourse, road, rail, and utility crossings
- considering and avoiding sensitive environmental features and restricted activity periods
- avoiding terrain subject to geotechnical issues such as areas of unstable slopes, problem soils, or known seismic activity
- avoiding lands of designated status, such as parks, protected areas, cemeteries and historic, archaeological or heritage sites
- avoiding concentrated areas of rural residences and urban developments
- considering input received from potentially affected landowners, stakeholders, and Indigenous groups through various engagement activities

### **Facility Sites – Compressor Station**

The desktop study completed by NGTL for facility sites requiring new permanent land included consideration of the following factors:

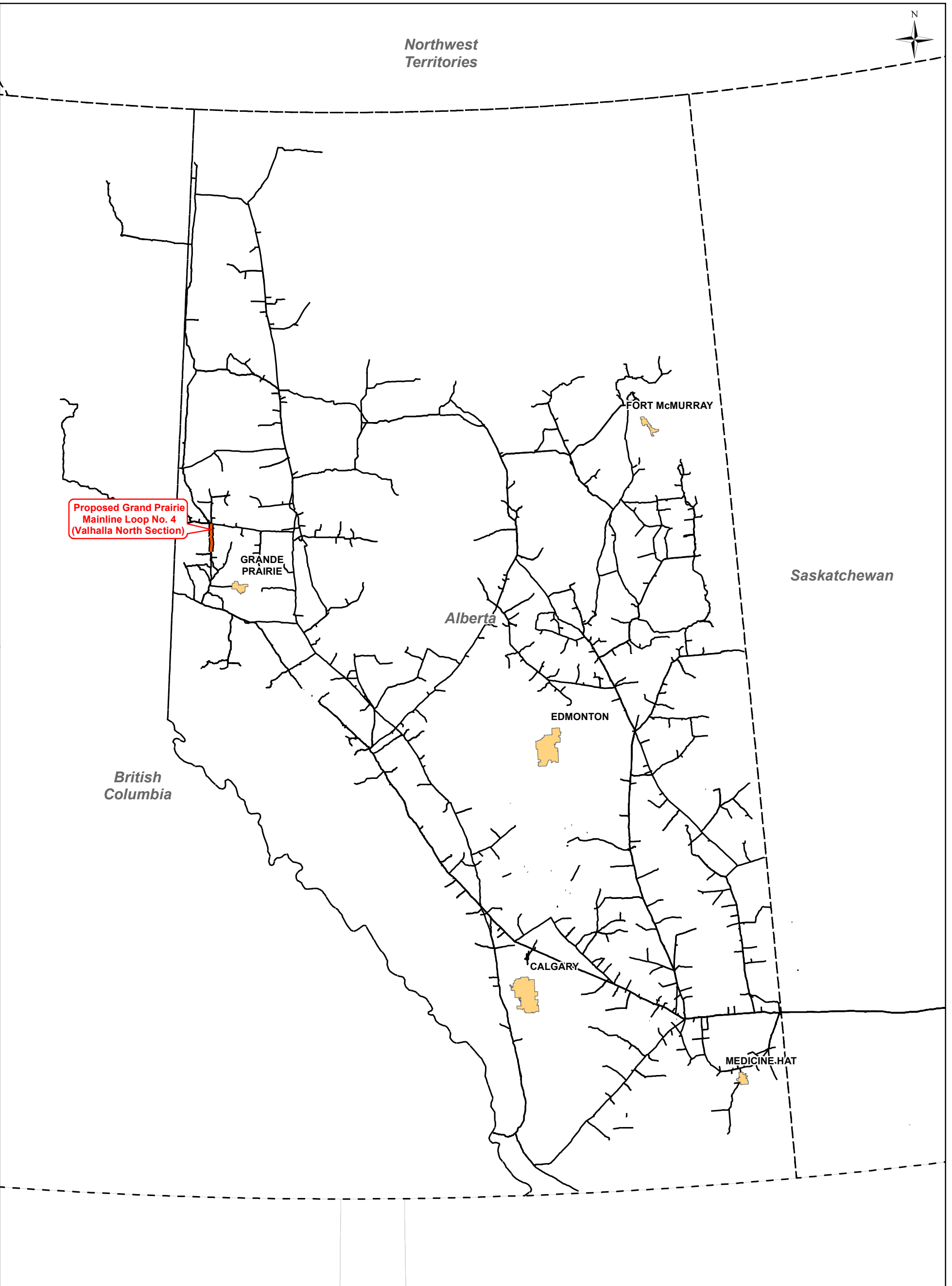
- existing road access and proximity to utility power
- third-party infrastructure (ROWs, facilities, residences, etc.)
- natural features (watercourses, water bodies, clearings, vegetation, slopes, etc.)
- considerations for customer pipe routing
- proximity of the site to nearby communities

- environmental sensitives of the geographical area (Restricted Activity Periods, Key Wildlife and Biodiversity Zones, migratory bird windows, wetlands, etc.)
- connections to existing pipeline mainlines and/or laterals
- proximity to noise receptors

#### **1.11 FEEDBACK RECEIVED ON ROUTE SELECTION DURING EARLY ENGAGEMENT**

To date, some potentially affected rightsholders and stakeholders have provided some feedback specific to pipeline routing; generally relating to maximizing the parallel lengths, minimizing fragmentation, and minimizing cumulative effects with other industrial development. NGTL will continue to engage with these groups to resolve any issues that may arise.

Engagement with Indigenous groups has also resulted in general feedback regarding watercourse crossings, wetlands, and medicinal plants. NGTL has reduced the proposed Berland River CS C3 Unit Addition footprint to avoid a vegetated swale in the northwest corner in consideration of Indigenous interests and engagement. NGTL will continue to finalize the Project footprints in the coming months and delineate survey information to determine Project specifics. As information pertinent to these issues become available to NGTL, NGTL will continue to engage with Indigenous groups on Project specifics and resolve identified issues and offer mitigations where applicable.



Proposed Grand Prairie  
 Mainline Loop No. 4  
 (Valhalla North Section)

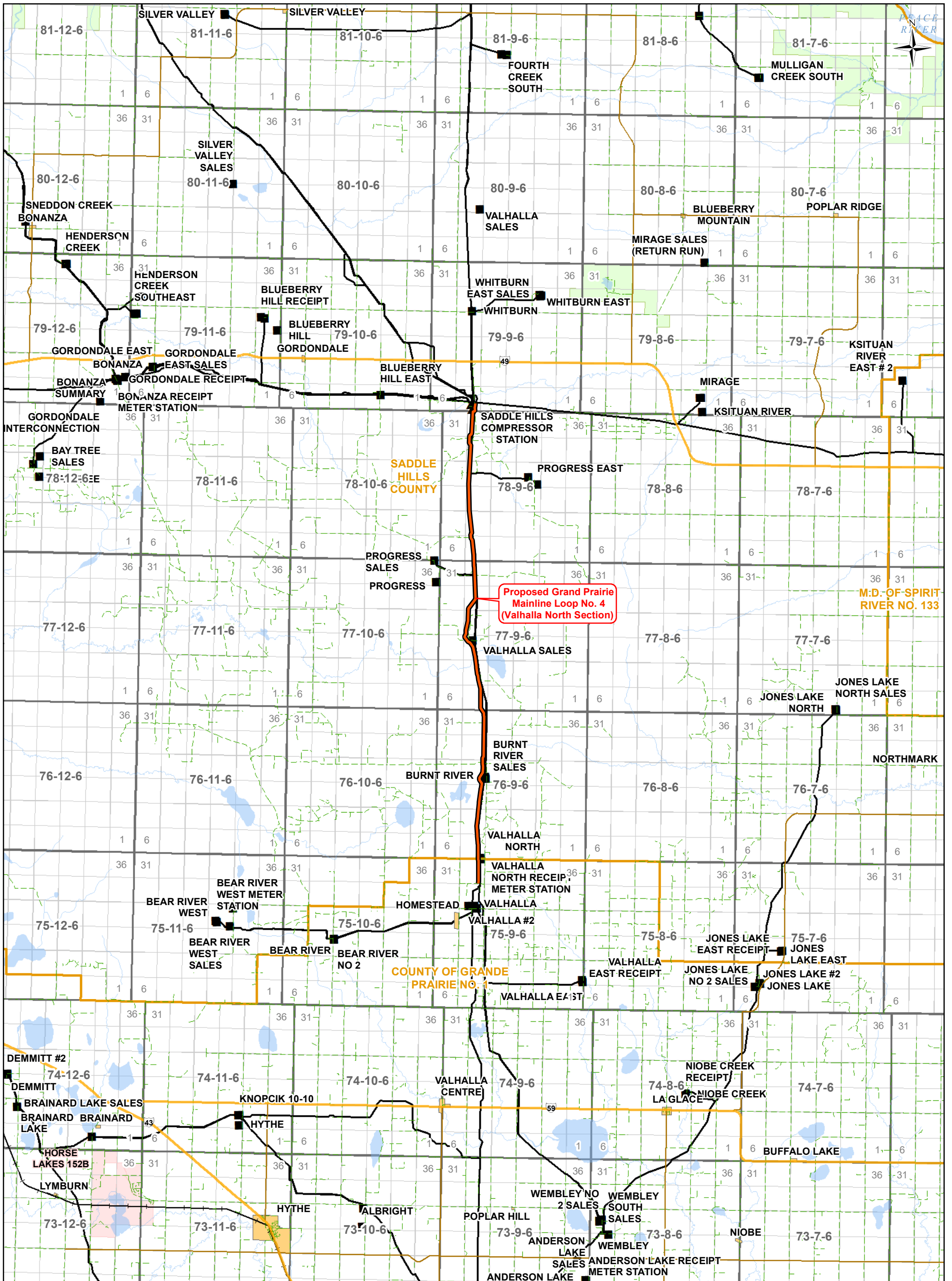
REVISION		DESCRIPTION
0		Issued for use, May 2, 2023

1:4,000,000

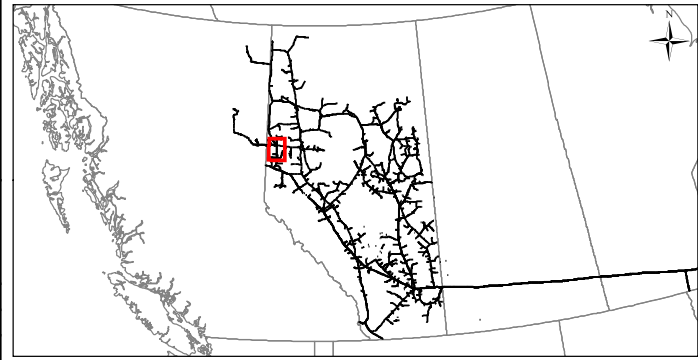
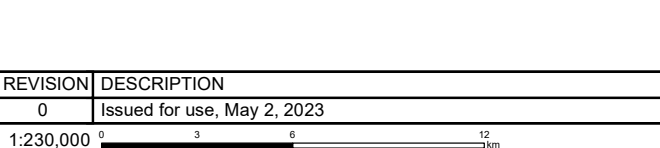
**Proposed GPML No.4  
 (Valhalla North Section)**

**Global**

Location: 55.675, -119.364	Coordinate System: NAD 1983 CSRS UTM Zone 11N
Route Reference: 02069-MSI-G-SH-0002_00	Sheet 1 of 4
Document Control: 02069-MSI-G-MP-0011	May 2, 2023



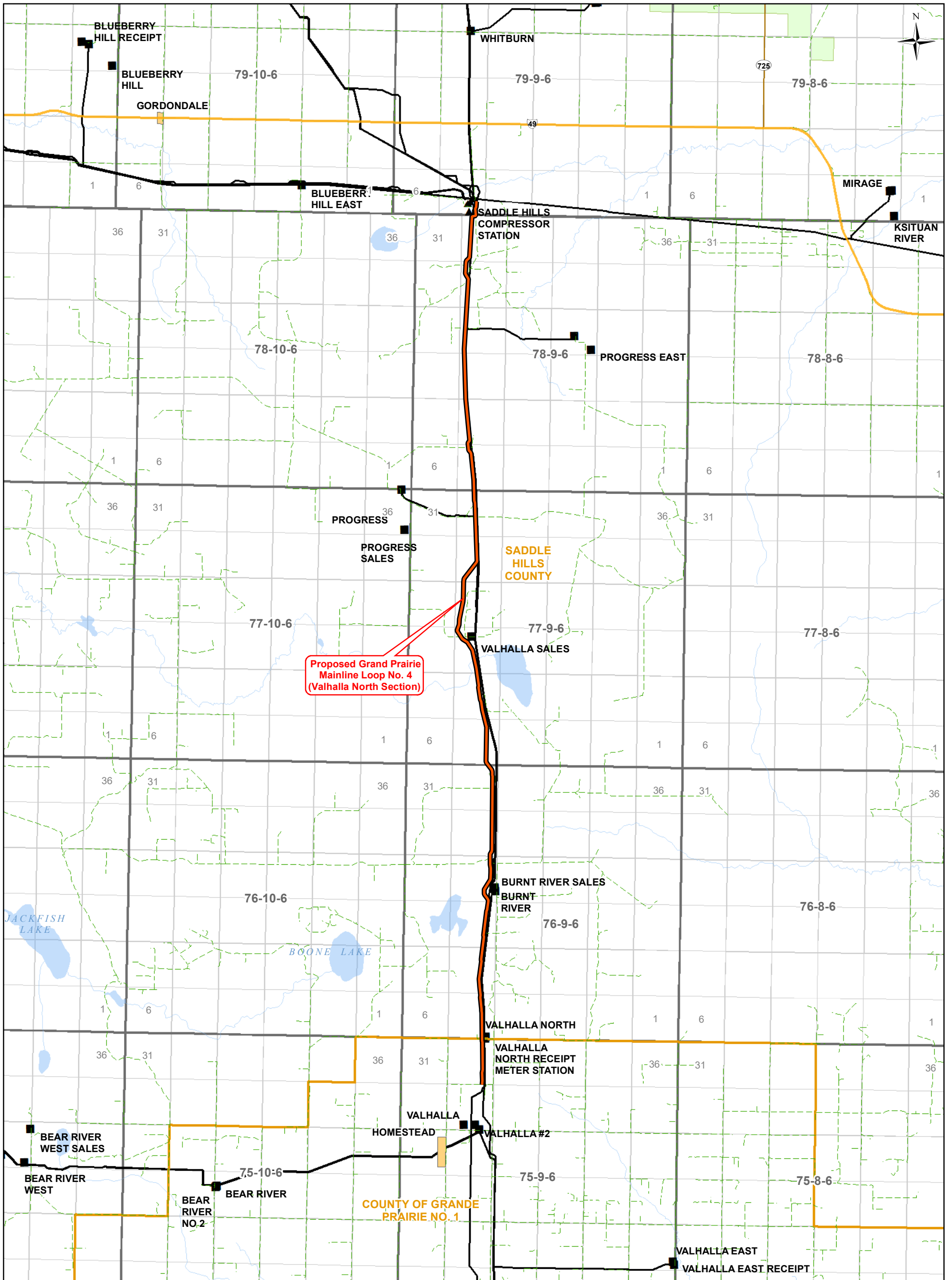
REVISION		DESCRIPTION
0	Issued for use, May 2, 2023	



**Proposed GPML No.4  
(Valhalla North Section)**

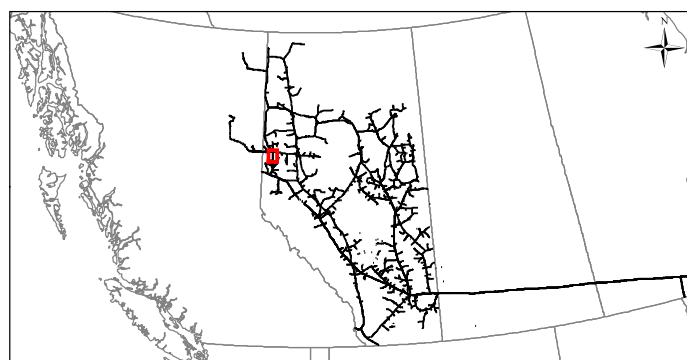
Regional

Location: 55.675, -119.364	Coordinate System: NAD 1983 CSRS UTM Zone 11N
Route Reference: 02069-MSI-G-SH-0002_00	Sheet 2 of 4
Document Control: 02069-MSI-G-MP-0011	May 2, 2023



Proposed Grand Prairie  
 Mainline Loop No. 4  
 (Valhalla North Section)

- |                    |                   |                         |
|--------------------|-------------------|-------------------------|
| Proposed Pipeline  | Primary Highway   | City / Town             |
| Compressor Station | Secondary Highway | Parks / Protected Areas |
| Meter Station      | Minor Roads       | First Nations           |
| Existing           | Railways          | Metis Settlement        |
| TC Energy Pipeline | River / Creek     | Military Reserve        |
|                    | Waterbody         | County                  |

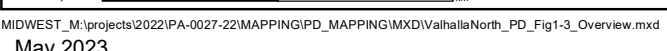


**Proposed GPML No.4  
 (Valhalla North Section)**

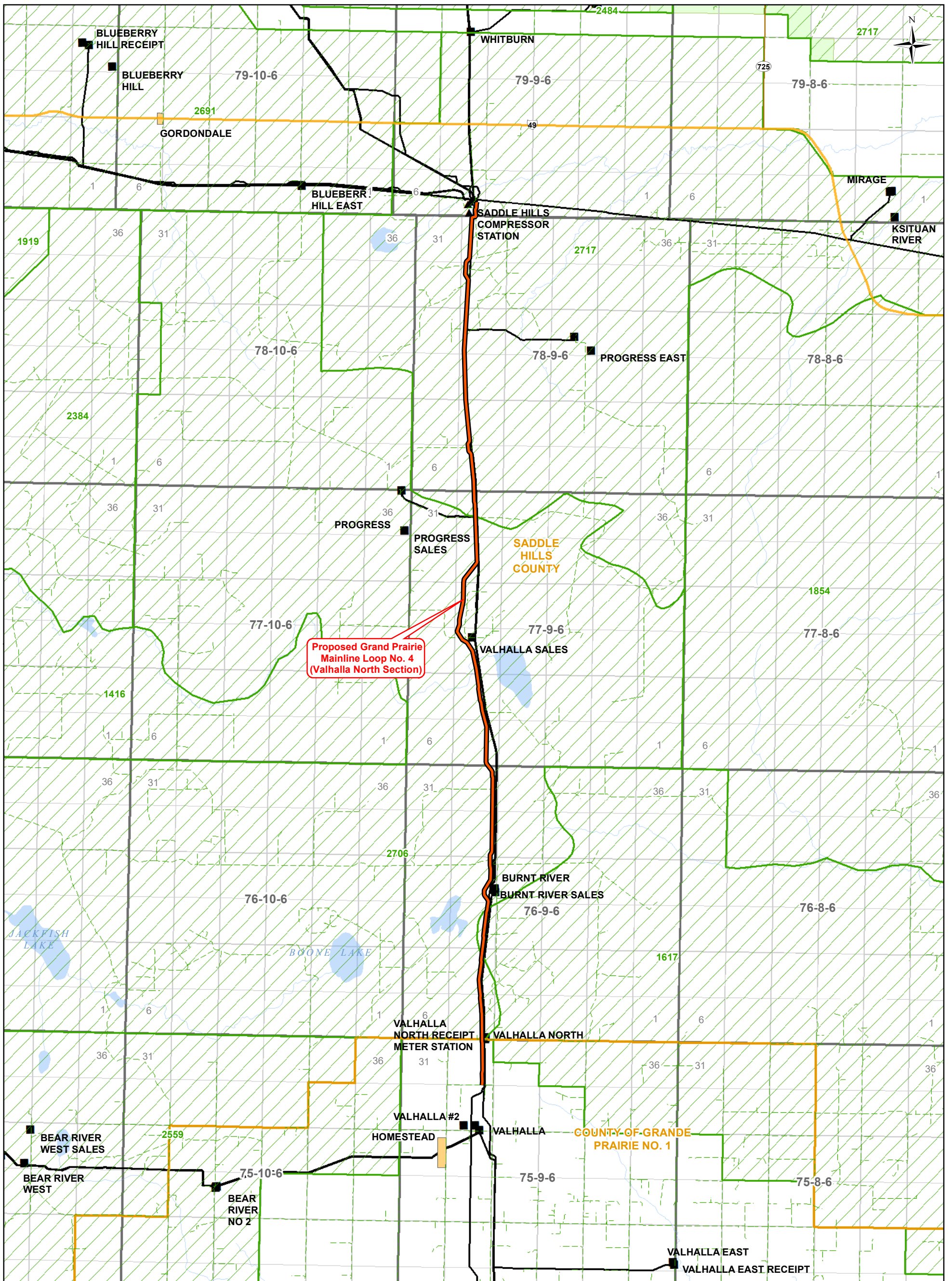
Detail

Location: 55.675, -119.364	Coordinate System: NAD 1983 CSRS UTM Zone 11N
Route Reference: 02069-MSI-G-SH-0002_00	Sheet 3 of 4
Document Control: 02069-MSI-G-MP-0011	May 2, 2023

REVISION	DESCRIPTION
0	Issued for use, May 1, 2023

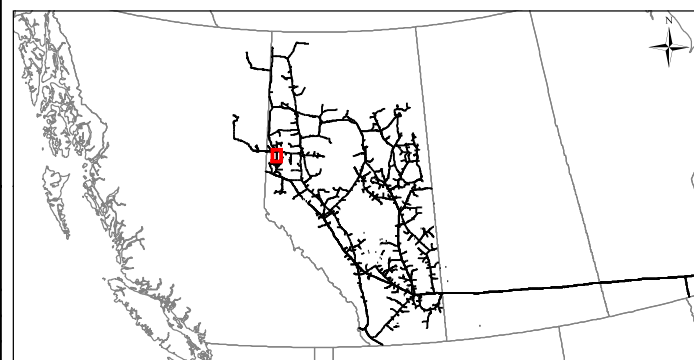


MIDWEST\_M:\projects\2022\PA-0027-22\MAPPING\PD\_MAPPING\IMXD\ValhallaNorth\_PD\_Fig1-3\_Overview.mxd  
 May 2023



Proposed Grand Prairie  
 Mainline Loop No. 4  
 (Valhalla North Section)

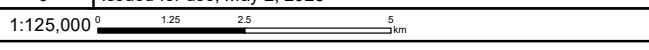
- Legend**
- Proposed Pipeline
  - Compressor Station
  - Meter Station
  - Existing TC Energy Pipeline
  - Primary Highway
  - Secondary Highway
  - Minor Roads
  - Railways
  - River / Creek
  - Waterbody
  - City / Town
  - Parks / Protected Areas
  - First Nations
  - Metis Settlement
  - Military Reserve
  - County
  - Trapper Boundary



**Proposed GPML No.4  
 (Valhalla North Section)**

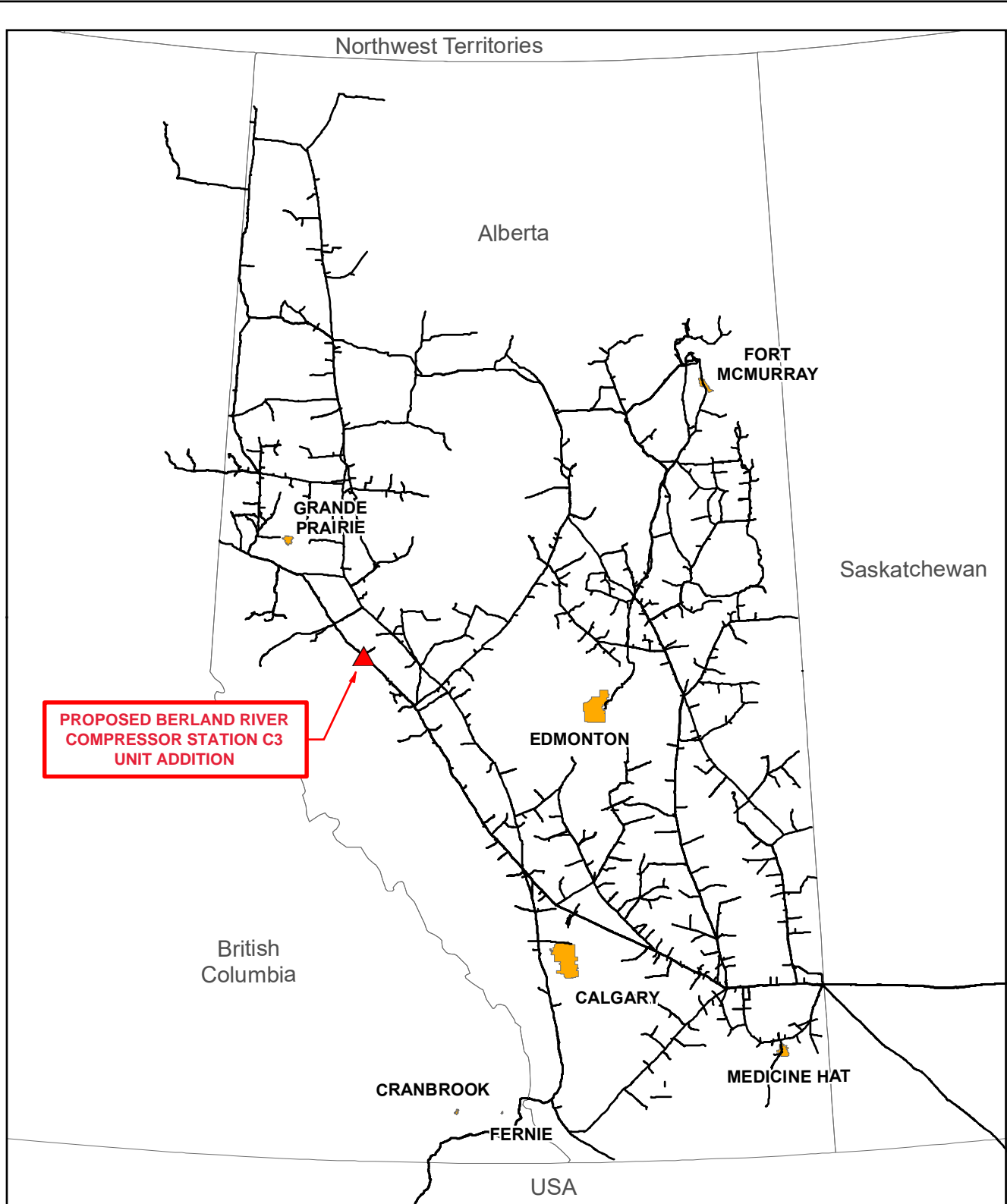
Trapper

REVISION	DESCRIPTION
0	Issued for use, May 2, 2023



Location: 55.675, -119.364	Coordinate System: NAD 1983 CSRS UTM Zone 12N
Route Reference: 02069-MSI-G-SH-0002_00	Sheet 4 of 4
Document Control: 02069-MSI-G-MP-0011	May 2, 2023

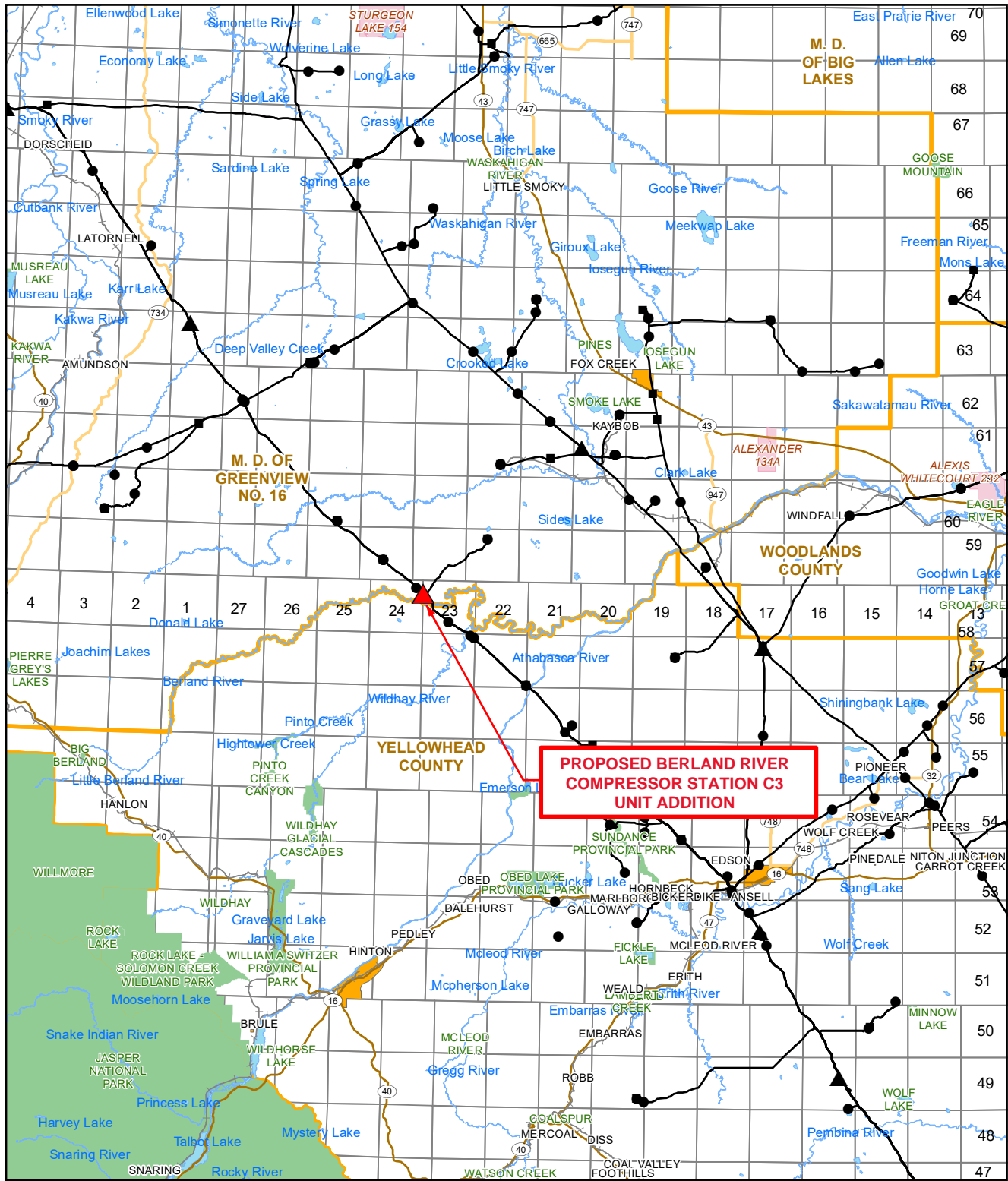




**PROPOSED BERLAND RIVER  
 COMPRESSOR STATION C3  
 UNIT ADDITION**

**TERMS OF USE:** The datasets used to create this map have been gathered from various sources for a specific purpose. TC Energy provides no warranty regarding the accuracy or completeness of the datasets. Unauthorized or improper use of this map, including supporting datasets is strictly prohibited. TC Energy accepts no liability whatsoever related to any loss or damages resulting from proper, improper, authorized or unauthorized use of this map and associated datasets and user expressly waives all claims relating to or arising out of use of or reliance on this map.

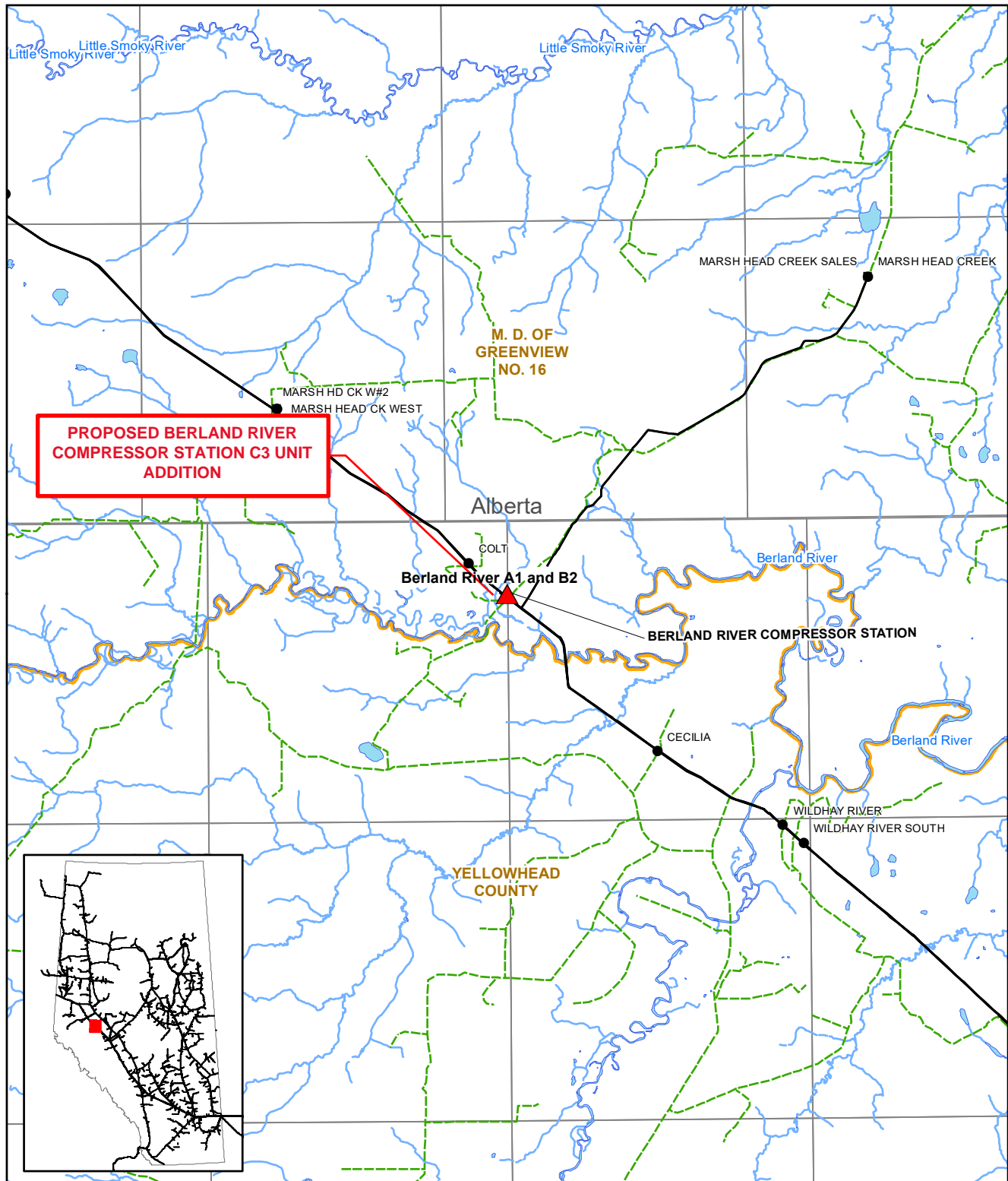
<b>PROPOSED BERLAND RIVER COMPRESSOR STATION C3 UNIT ADDITION</b>			Berland River CS Existing NGTL Pipeline City / Town		
Global					
CARTOGRAPHER:	DL	19-09-24	LOCATION: 54.044, - 117.421    REVISION: 0    ISSUED DATE: 19-09-24 COORDINATE SYSTEM: NAD 1983 UTM Zone 11N    ISSUE PURPOSE: IFU		
REVIEWER:	LP	19-09-24	0 25 50 100 150 200 250 km		
APPROVER:	JC	19-09-24	FILE NAME: T_0228_0003_01_00_BerlandUnitAddition_Fig1_mxd		



**TERMS OF USE:** The datasets used to create this map have been gathered from various sources for a specific purpose. TC Energy provides no warranty regarding the accuracy or completeness of the datasets. Unauthorized or improper use of this map, including supporting datasets is strictly prohibited. TC Energy accepts no liability whatsoever related to any loss or damages resulting from proper, improper, authorized or unauthorized use of this map and associated datasets and user expressly waives all claims relating to or arising out of use of or reliance on this map.

<b>PROPOSED BERLAND RIVER COMPRESSOR STATION C3 UNIT ADDITION</b>					
Regional					
CARTOGRAPHER:	DL	19-09-24			
REVIEWER:	LP	19-09-24			
APPROVER:	JC	19-09-24	Not all legend elements may appear on the map.		

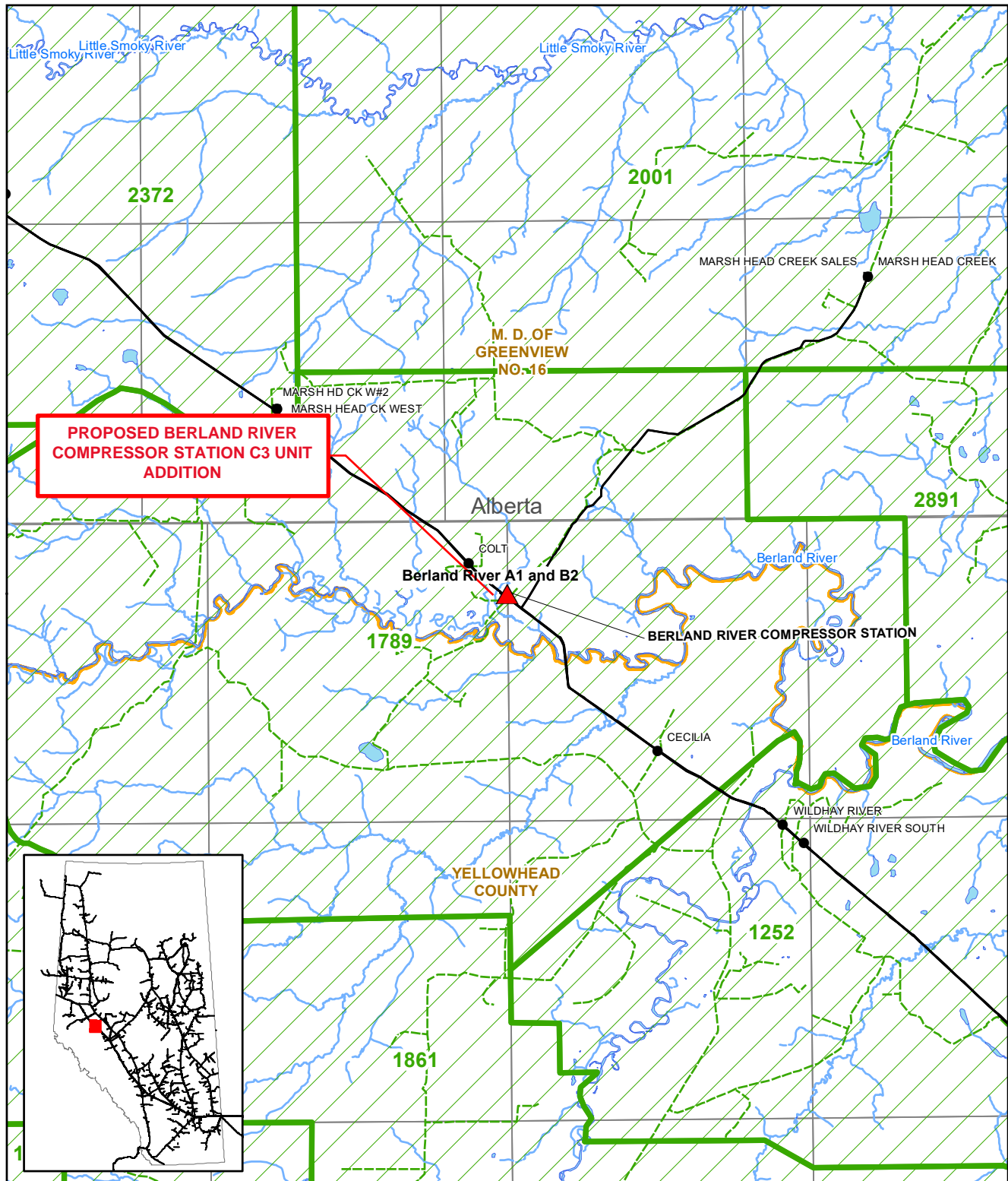
LOCATION: 54.044, -117.421	REVISION: 0	ISSUED DATE: 19-09-24
COORDINATE SYSTEM: NAD 1983 UTM Zone 11N	ISSUE PURPOSE: IFU	
MAP NUMBER: T_0228_0003_02_00_BerlandUnitAddition_Fig1_mxd		



**TERMS OF USE:** The datasets used to create this map have been gathered from various sources for a specific purpose. TC Energy provides no warranty regarding the accuracy or completeness of the datasets. Unauthorized or improper use of this map, including supporting datasets is strictly prohibited. TC Energy accepts no liability whatsoever related to any loss or damages resulting from proper, improper, authorized or unauthorized use of this map and associated datasets and user expressly waives all claims relating to or arising out of use of or reliance on this map.

<b>PROPOSED BERLAND RIVER COMPRESSOR STATION C3 UNIT ADDITION</b>			▲ Berland River CS	— Railway	■ City / Town	
Detail			▲ Compressor Station	— Gravel Road	■ River / Lake	
CARTOGRAPHER:	DL	19-09-24	■ Delivery Meter Station	— Primary Highway	■ First Nation Land	LOCATION: 54,044, - 117,421
REVIEWER:	LP	19-09-24	● Receipt Meter Station	— Secondary Highway	■ Metis Settlement	REVISION: B
APPROVER:	JC	19-09-24	— NGTL Pipelines	■ Protected Area	■ Military Reserve	ISSUED DATE: 19-09-24
				■ County		COORDINATE SYSTEM: NAD 1983 UTM Zone 10N
						ISSUE PURPOSE: IFU
						0 3 6 km
						MAP NUMBER: T_0228_0003_03_00_BerlandUnitAddition_Fig1_mxd

Not all legend elements may appear on the map



**TERMS OF USE:** The datasets used to create this map have been gathered from various sources for a specific purpose. TC Energy provides no warranty regarding the accuracy or completeness of the datasets. Unauthorized or improper use of this map, including supporting datasets is strictly prohibited. TC Energy accepts no liability whatsoever related to any loss or damages resulting from proper, improper, authorized or unauthorized use of this map and associated datasets and user expressly waives all claims relating to or arising out of use of or reliance on this map.

<b>PROPOSED BERLAND RIVER COMPRESSOR STATION C3 UNIT ADDITION</b>								
Trapper						LOCATION: 54_044, - 117.421	REVISION: B	ISSUED DATE: 19-09-24
CARTOGRAPHER:	DL	19-09-24				COORDINATE SYSTEM: NAD 1983 UTM Zone 10N	ISSUE PURPOSE: IFU	
REVIEWER:	LP	19-09-24				0 3 6 km		
APPROVER:	JC	19-09-24	MAP NUMBER: T_0228_0003_04_00_BerlandUnitAddition_Fig1_mxd					

Not all legend elements may appear on the map