



450 - 1 Street SW  
Calgary, Alberta T2P 5H1

Tel: (403) 920-7425  
E-mail: kenneth\_poutney@tcenergy.com

April 16, 2026

Filed Electronically

Canada Energy Regulator  
Suite 210, 517 Tenth Avenue SW  
Calgary, Alberta T2R 0A8

**Attention: Ramona Sladic, Secretary of the Commission**

Dear Ramona Sladic:

**Re: NGTL GP Ltd. (NGTL GP), as general partner on behalf of  
NGTL Limited Partnership  
2025 Pipelines and Associated Facilities Decommissioning Program  
(2025 Decommissioning Program)  
Order MO-014-2026  
Program Update No. 1  
File No.: 6503130**

On March 27, 2026, the Commission of the Canada Energy Regulator (Commission) issued Decision Letter and Order approving the 2025 Decommissioning Program.<sup>1</sup> As Program design review progressed, NGTL GP has identified changes to certain project development areas (PDAs), and as such NGTL GP is providing the following updates:

As a result of further detailed design and survey reviews, the following PDAs were slightly enlarged to ensure adequate workspace to safely and effectively execute Decommissioning Activities:

- ABL6-VS-1 on the Altee-Buffalo Lateral. See Attachment 1 for a revised Environmental Site Information Sheet [ESIS].<sup>2</sup>
- DEL6-MS-1 on the Delila Lateral. See Attachment 2 for a revised ESIS.<sup>3</sup>
- EAS42-VS-1 and EAS42-VS-2 on the Eastern Alberta System Mainline Loop No. 3 (EAS ML Empress to Princess Bypass). See Attachments 3 and 4 for the revised ESIS.<sup>4</sup>
- NOR16-MS-2 and NOR16-MS-5 on the North Lateral Extension (North Lateral

---

<sup>1</sup> Filing ID: C38369.

<sup>2</sup> Filing ID: C35698-2 PDF page 5 of 50.

<sup>3</sup> Filing ID: C35698-2 PDF page 9 of 50.

<sup>4</sup> Filing ID: C35698-2 PDF pages 13 and 14 of 50.

Extension Stage I Brooks). See Attachment 6 and 7 for the revised ESIS.<sup>5</sup>

- NLE16-T-2, NLE16-VS-1 and NLE16-VS-4 on the North Lateral Extension (North Lateral Extension Stage I Vegreville). See Attachment 9, 10 and 11 for the revised ESIS.<sup>6</sup>
- WAS42-VS-1, WAS42-VS-5 and WAS42-VS-6 on the Western Alberta System (WAS ML) Loop – Westrose Section (see Attachment 12 and 13 for the revised ESIS).<sup>7</sup>

Further, the following PDAs on the North Lateral Extension (North Lateral Extension Stage I Brooks) have been refined for the following reasons:

- NORL16-T-4 – the original isolation location for this activity was incorrectly identified and was moved approximately 25 meters south across highway 570. See Attachment 5 for the revised ESIS.<sup>8</sup>
- NOR16-VS-1 – an additional isolation location was identified to be required within the NGTL GP facility site. The PDA for this location was updated to show the additional location and ensure the appropriate area has been properly assessed. See Attachment 8 for the revised ESIS.<sup>9</sup>

NGTL GP confirms that the potential short-term and long-term effects of the Decommissioning Activities remain unchanged. NGTL GP further confirms, that the updates described above do not result in any new environmental interactions not previously assessed in the 2025 Decommissioning Program. The scope of Decommissioning Activities continues to be fully addressed by standard mitigation measures outlined in the Program's Environmental Protection Plan (EPP). NGTL GP confirms it will update the Program's EPP to reflect these revisions for the affected PDAs.

For enquiries, please contact me at (403) 920-7425 or at [kenneth\\_pountney@tcenergy.com](mailto:kenneth_pountney@tcenergy.com).

Yours truly,

**NGTL GP Ltd., as general partner on behalf of  
NGTL Limited Partnership**

*Original signed by*

Kenneth Pountney  
Regulatory Project Manager,  
Regulatory Facilities, Canadian Natural Gas Pipelines

Attachments

---

<sup>5</sup> Filing ID: C35698-2 PDF pages 31 and 32 of 50.

<sup>6</sup> Filing ID: C35698-2 PDF pages 39, 40 and 42 of 50.

<sup>7</sup> Filing ID: C35698-2 PDF pages 48 and 50 of 50.

<sup>8</sup> Filing ID: C35698-2 PDF page 28 of 50.

<sup>9</sup> Filing ID: C35698-2 PDF page 34 of 55.



AERIAL PHOTOGRAPHY

|   |  |   |
|---|--|---|
| <b>PROGRAM COMPONENT</b>                              | Atlee-Buffer Lateral   |   |
| <b>PROJECT DEVELOPMENT AREA</b>                       | ABL6-VS-1  |   |
| <b>PLANNED ACTIVITIES</b>                             | Isolate NGTL GP line; decommission in place.                               |   |
| <b>LEGAL LAND LOCATION</b>                            | SE 24-020-07 W4M; SW 19-020-06 W4M   |   |
| <b>LAND OWNERSHIP</b>                                 | Special Areas.   |   |
| <b>LAND USE</b>                                       | White Area; land use within the PDA is: grassland, industrial and wetland. |   |
| <b>RESOURCES AND CONSTRUCTION MITIGATION MEASURES</b> | <b>SOILS DESCRIPTION</b>   | <ul style="list-style-type: none"> <li>90% Orthic Brown Chernozem (Kangaroo, Foremost, Cavendish) and 10% Orthic Humic Gleysol (Misc. Gleysol) developed over gravelly, very coarse glaciofluvial or eolian, medium till, and undifferentiated materials. Well to rapidly drained.</li> <li>Considerations: stripping limitations (not obvious colour change from topsoil to subsoil), moderate to high wind erosion risk, moderate water erosion risk on slopes &gt;9%, face instability, and low to high compaction and rutting risk.</li> </ul>  |
|   | <b>SOIL HANDLING / SOIL SALVAGE DEPTH AND CRITERIA</b>                     | <ul style="list-style-type: none"> <li>See Environmental Notes for mitigation related to soil handling / soil salvage depth and criteria.</li> </ul>  |
|   | <b>WATERCOURSES</b>  | <ul style="list-style-type: none"> <li>No watercourses within or intersecting the PDA.</li> <li>No watercourses within 100 m of the PDA.</li> <li>See Environmental Notes for mitigation related to watercourses.</li> </ul>  |
|   | <b>FISHERIES RESOURCES</b>   | <ul style="list-style-type: none"> <li>No fish-bearing watercourses within or intersecting the PDA.</li> <li>No fish-bearing watercourses within 100 m of the PDA.</li> <li>See Environmental Notes for mitigation related to watercourses.</li> </ul>  |
|   | <b>VEGETATION</b>  | <ul style="list-style-type: none"> <li>Rare vegetation: PDAs are within SARA-listed species Endangered/Threatened Plant Range for slender mouse-ear cress (<i>Crucihimalaya virgata</i>, S2).</li> <li>See Environmental Notes for mitigation related to vegetation and weeds.</li> </ul>   |
|   | <b>WETLANDS</b>  | <ul style="list-style-type: none"> <li>One-Two Temporary Graminoid Marsh M[G][II] (W785 and W972) intersects the PDA. COP notification is required.</li> <li>See Environmental Notes for mitigation related to wetlands.</li> </ul>   |
|   | <b>WILDLIFE</b>  | <ul style="list-style-type: none"> <li>See Environmental Notes for mitigation measures related to the following: <ul style="list-style-type: none"> <li>Burrowing Owl Range (nesting period for the PDA is April 1 to August 15)</li> <li>Sharp-tailed Grouse Range (sensitive lekking period for the PDA is March 15 to June 15)</li> <li>Sensitive Amphibian Range (active amphibian season for the PDA is May 1 to September 30)</li> <li>Sensitive Raptor Range (for ferruginous hawk, golden eagle and prairie falcon [sensitive raptor nesting period for the PDA is March 15 to July 15])</li> <li>Sensitive Snake Habitat (active snake season for the PDA is March 15 to October 31)</li> <li>Migratory bird nesting period for the PDA is April 21 to August 13.</li> </ul> </li> </ul> |
|   | <b>HISTORICAL RESOURCES</b>  | <ul style="list-style-type: none"> <li>No known HRV lands are present.</li> <li><del>HRV lands intersect other PDAs on the lateral and HRA Approval is therefore required per direction from Alberta Culture for the 2025 Abandonment Program. HR Application will be submitted to Alberta Culture for HRA Approval. Any conditions of approval issued by Alberta Culture will be implemented by NGTL GP. HRA Approval not required per direction from Alberta Culture for the 2025 Decommissioning Program.</del></li> <li>See Environmental Notes for mitigation related to historical resources.</li> </ul>  |
|   | <b>TRADITIONAL LAND USE</b>  | <ul style="list-style-type: none"> <li>No known TLU sites within the PDA.</li> <li>See Environmental Notes for mitigation related to TLU.</li> </ul>  |
|   | <b>SITE CONTAMINATION CONSIDERATIONS</b>                                   | <ul style="list-style-type: none"> <li>See Environmental Notes for mitigation related to site contamination considerations.</li> </ul>  |
|   | <b>ACCESS</b>  | <ul style="list-style-type: none"> <li>Restrict all Project activities to the approved Project footprint. All Project traffic will adhere to safety and road closure regulations.</li> </ul>  |
|   | <b>RECLAMATION</b>   | <ul style="list-style-type: none"> <li>Topsoil or fill material imported must be clean, free of listed weeds, match surrounding soil texture and be approved in accordance with Company requirements prior to use.</li> <li>See Environmental Notes for mitigation related to reclamation.</li> </ul>   |
|   | <b>OTHER</b>   | <ul style="list-style-type: none"> <li>None.</li> </ul>   |

**NOTES:**  
Refer to the Environmental Protection Plan for a complete understanding of the mitigation requirements for the Project.

**Legend**

**Project Data**

- Isolation Point
- Decommissioning Pipeline
- Project Development Area (PDA)

**Base Data**

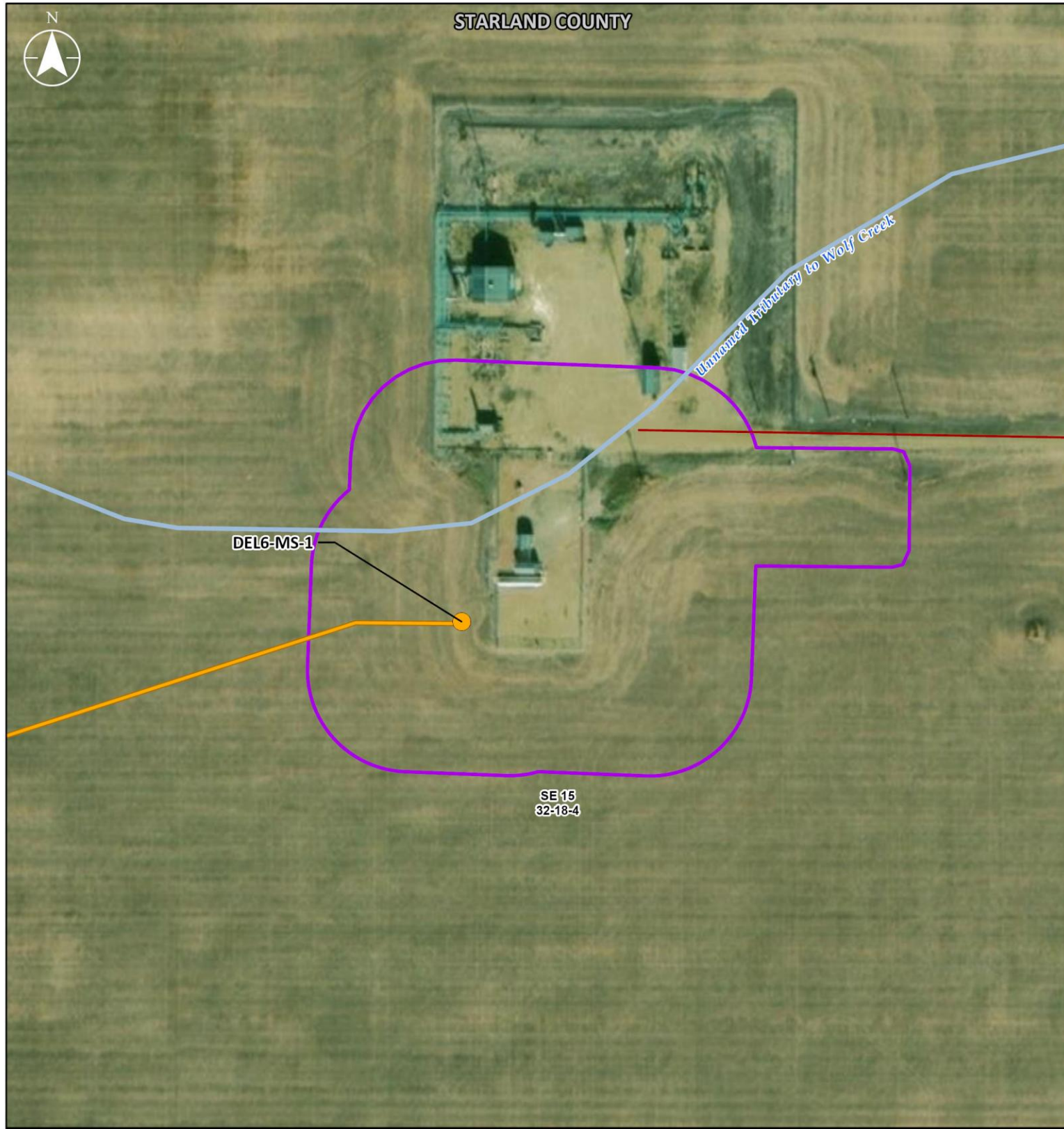
- Road

**Wetlands**

- Temporary Graminoid Marsh M[G][II]

Rare vegetation: PDAs are within Endangered/Threatened Plant Range for slender mouse-ear-cress. The entire map extent is within Burrowing Owl Range, Sensitive Amphibian Range, Sensitive Raptor Range, Sensitive Snake Habitat, Sharp-tailed Grouse Range.

|   |                 |                             |                 |                       |   |  |
|---|-----------------|-----------------------------|-----------------|-----------------------|---|--|
| SHEET REVISION<br>Rev 1   | ITERIAL ID<br>0 | PROJECTOR<br>10TMAEP Forest | DATUM<br>NAD 83 | DATE<br>December 2025 | <br>PREPARED FOR<br>                            | <b>ENVIRONMENTAL SITE INFORMATION SHEET</b><br><b>2025 DECOMMISSIONING PROGRAM</b><br>Atlee-Buffer Lateral |
| Project Data: TransCanada Pipelines Ltd. Jacobs 2025; Transportation: Atlee, 2019; Alberta Municipal Resources: Alberta Culture and Tourism 2024; Vegetation: Alberta Environment and Parks 2022; Wildlife Sensitivity: Alberta Environment and Protected Areas 2024; Imagery: Southern Alberta Partners, Vario, Esri, HERE, Garmin, FAO, NOAA, EPA, AAFIC, NRCan, NRCan. |                 |                             |                 |                       | Original Page Size: 11 x 17<br>Metres - 1:1,500 |  |



|   |  |  |
|---|--|--|
| <b>PROGRAM COMPONENT</b>                              | Delia Lateral  |  |
| <b>PROJECT DEVELOPMENT AREA</b>                       | DEL6-MS-1  |  |
| <b>PLANNED ACTIVITIES</b>                             | Isolate NGTL GP line; decommission in place.                                     |  |
| <b>LEGAL LAND LOCATION</b>                            | SE 15-032-18 W4M   |  |
| <b>LAND OWNERSHIP</b>                                 | Freehold.  |  |
| <b>LAND USE</b>                                       | White Area; land use within the PDA is: cultivated, industrial and tame pasture. |  |
| <b>RESOURCES AND CONSTRUCTION MITIGATION MEASURES</b> | <b>SOILS DESCRIPTION</b>   | <ul style="list-style-type: none"> <li>Upland soils consist of 35% Orthic Dark Brown Chernozem (Coronation), 35% Dark Brown Solod (Michichi), 10% Orthic Humic Vertisol (Drumheller), and 10% Orthic Humic Gleysols (misc.gleysol), developed on medium to very fine textured glaciofluvial and glaciolacustrine, and undifferentiated materials. Moderately well to poorly drained.</li> <li>Considerations: high wind erosion risk, moderate water erosion on slopes &lt; 9%, moderate to high compaction and rutting risk, temporary ponding associated with a seasonally high water table in spring, tough (Solonetzic) Bnt horizon, weakly saline and sodic, stripping limitations due to wetness (associated with the Orthic Humic Gleysol and high water table).</li> </ul> |
|   | <b>SOIL HANDLING / SOIL SALVAGE DEPTH AND CRITERIA</b>                           | <ul style="list-style-type: none"> <li>See Environmental Notes for mitigation related to soil handling / soil salvage depth and criteria.</li> </ul>   |
|   | <b>WATERCOURSES</b>  | <ul style="list-style-type: none"> <li>PDA crosses an unnamed tributary to Wolf Creek (100495).</li> <li>See Environmental Notes for mitigation related to watercourses.</li> </ul>  |
|   | <b>FISHERIES RESOURCES</b>   | <ul style="list-style-type: none"> <li>PDA crosses an unnamed tributary to Wolf Creek (100495). The watercourse is a Class D water body with no RAP. Fish bearing status is unknown.</li> <li>See Environmental Notes for mitigation related to watercourses.</li> </ul>   |
|   | <b>VEGETATION</b>  | <ul style="list-style-type: none"> <li>No rare vegetation concerns.</li> <li>See Environmental Notes for mitigation related to vegetation and weeds.</li> </ul>  |
|   | <b>WETLANDS</b>  | <ul style="list-style-type: none"> <li>No wetlands within or intersecting the PDA.</li> <li>No wetlands identified within 30 m of the PDA.</li> <li>See Environmental Notes for mitigation related to wetlands.</li> </ul>   |
|   | <b>WILDLIFE</b>  | <ul style="list-style-type: none"> <li>See Environmental Notes for mitigation measures related to the following: <ul style="list-style-type: none"> <li>Burrowing Owl Range (nesting period for the PDA is April 1 to August 15).</li> <li>Sharp-tailed Grouse Range (sensitive lekking period for the PDA is March 15 to June 15).</li> <li>Sensitive Raptor Range (for ferruginous hawk, golden eagle and prairie falcon [sensitive raptor nesting period for the PDA is March 15 to July 15]).</li> <li>Migratory bird nesting period for the PDA is April 26 to August 14.</li> </ul> </li> </ul>  |
|   | <b>HISTORICAL RESOURCES</b>  | <ul style="list-style-type: none"> <li>No known HRV lands are present.</li> <li>HRA Approval not required per direction from Alberta Culture for the 2025 Decommissioning Program.</li> <li>See Environmental Notes for mitigation related to historical resources.</li> </ul>   |
|   | <b>TRADITIONAL LAND USE</b>  | <ul style="list-style-type: none"> <li>No known TLU sites within the PDA.</li> <li>See Environmental Notes for mitigation related to TLU.</li> </ul>   |
|   | <b>SITE CONTAMINATION CONSIDERATIONS</b>   | <ul style="list-style-type: none"> <li>See Environmental Notes for mitigation related to site contamination considerations.</li> </ul>   |
|   | <b>ACCESS</b>  | <ul style="list-style-type: none"> <li>Restrict all Project activities to the approved Project footprint. All Project traffic will adhere to safety and road closure regulations.</li> </ul>   |
|   | <b>RECLAMATION</b>   | <ul style="list-style-type: none"> <li>Topsoil or fill material imported must be clean, free of listed weeds, match surrounding soil texture and be approved in accordance with Company requirements prior to use.</li> <li>See Environmental Notes for mitigation related to reclamation.</li> </ul>  |
|   | <b>OTHER</b>   | <ul style="list-style-type: none"> <li>None.</li> </ul>  |

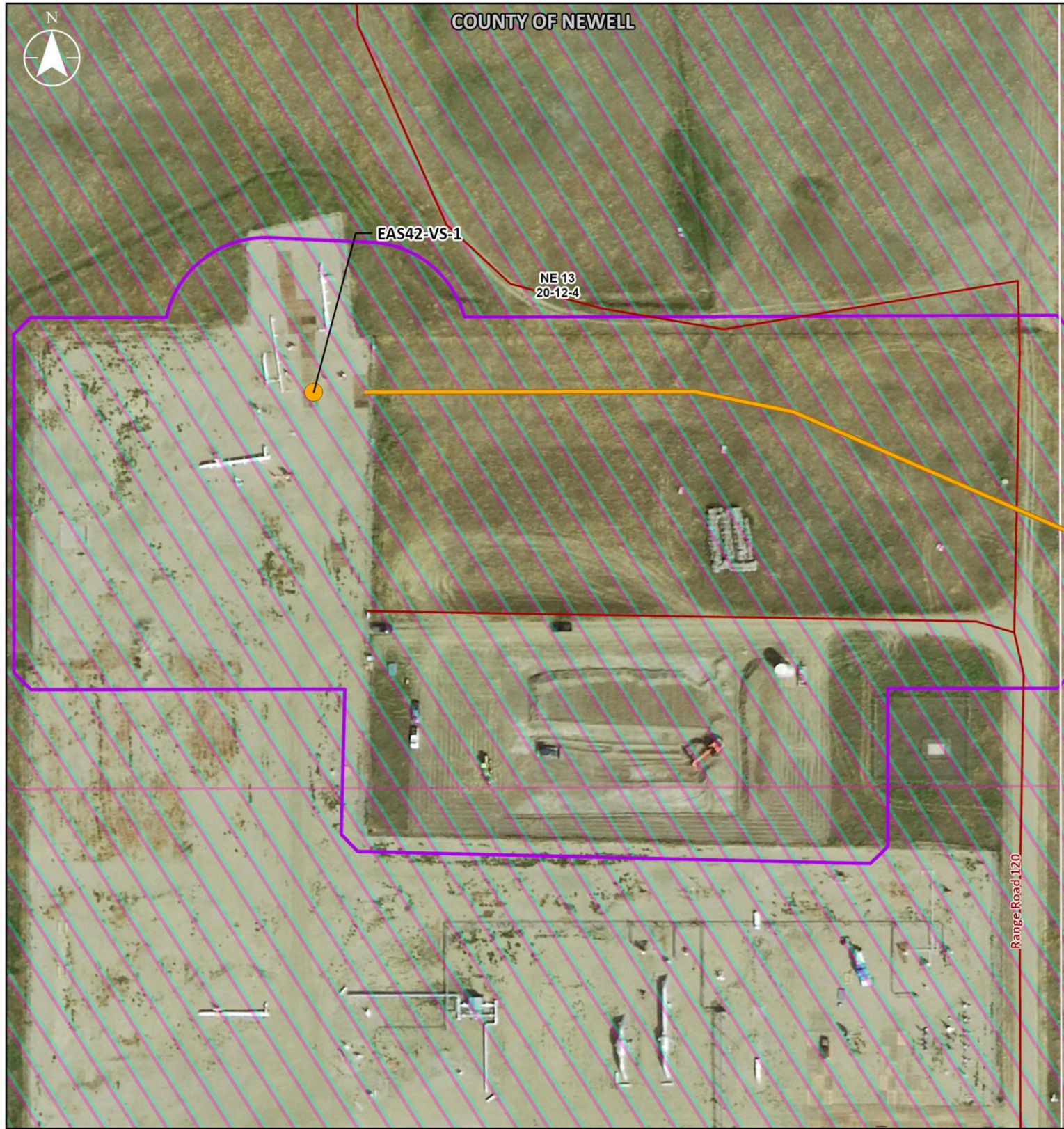
**NOTES:**  
Refer to the Environmental Protection Plan for a complete understanding of the mitigation requirements for the Project.

AERIAL PHOTOGRAPHY

|                                  |                  |
|----------------------------------|------------------|
| <b>Legend</b>                    |                  |
| <b>Project Data</b>              | <b>Base Data</b> |
| ● Isolation Point                | — Road           |
| — Decommissioning Pipeline       | — Watercourse    |
| ▭ Project Development Area (PDA) |                  |

The entire map extent is within Burrowing Owl Range, Sensitive Raptor Range, Sharp-tailed Grouse Range.

|   |                  |                              |                                  |                              |   |
|---|------------------|------------------------------|----------------------------------|------------------------------|---|
| SHEET REVISION<br>Rev 1   | INTERNAL ID<br>0 | PROJECTION<br>10TMAEP Forest | DATUM<br>NAD 83                  | PREPARED BY<br><b>Jacobs</b> | <b>ENVIRONMENTAL SITE INFORMATION SHEET</b><br><b>2025 DECOMMISSIONING PROGRAM</b><br>Delia Lateral |
| Project Data: TransCanada Pipelines Ltd, Jacobs 2025; Transportation: AtlasIS 2019; Alberta Municipal Boundaries: AtlasIS 2021; Hydrology: IHS 2011; NRCan 2009; Wetlands: Jacobs 2025; Historic Resources: Alberta Culture and Tourism 2014; Vegetation: Alberta Environment and Parks 2022; Wildlife Sensitivity: Alberta Environment and Protected Areas 2024; Imagery: Sources: Esri, Mapbox, PNO, NOAA, USGS, EPA, AANFC, NRCan, Vector, Garmin, FAO, NOAA, EPA, AAJ |                  | DATE<br>December 2025        | PREPARED FOR<br><b>TC Energy</b> |                              |   |
| 0 30 60 90<br>Metres - 1:1,500  |                  |                              | Original Page Size: 11 x 17      |                              |   |



AERIAL PHOTOGRAPHY

**Legend**

**Project Data**

- Isolation Point
- Decommissioning Pipeline
- Project Development Area (PDA)

**Base Data**

- Road

**Historic Resource Value**

- Historic Resource Value - 3
- Historic Resource Value - 5

Rare vegetation: PDAs are within ACIMS record for dwarf woollyheads. The entire map extent is within Burrowing Owl Range, Sensitive Amphibian Range, Sensitive Raptor Range, Sensitive Snake Hibernacula Range, Sensitive Snake Habitat, Sharp-tailed Grouse Range.

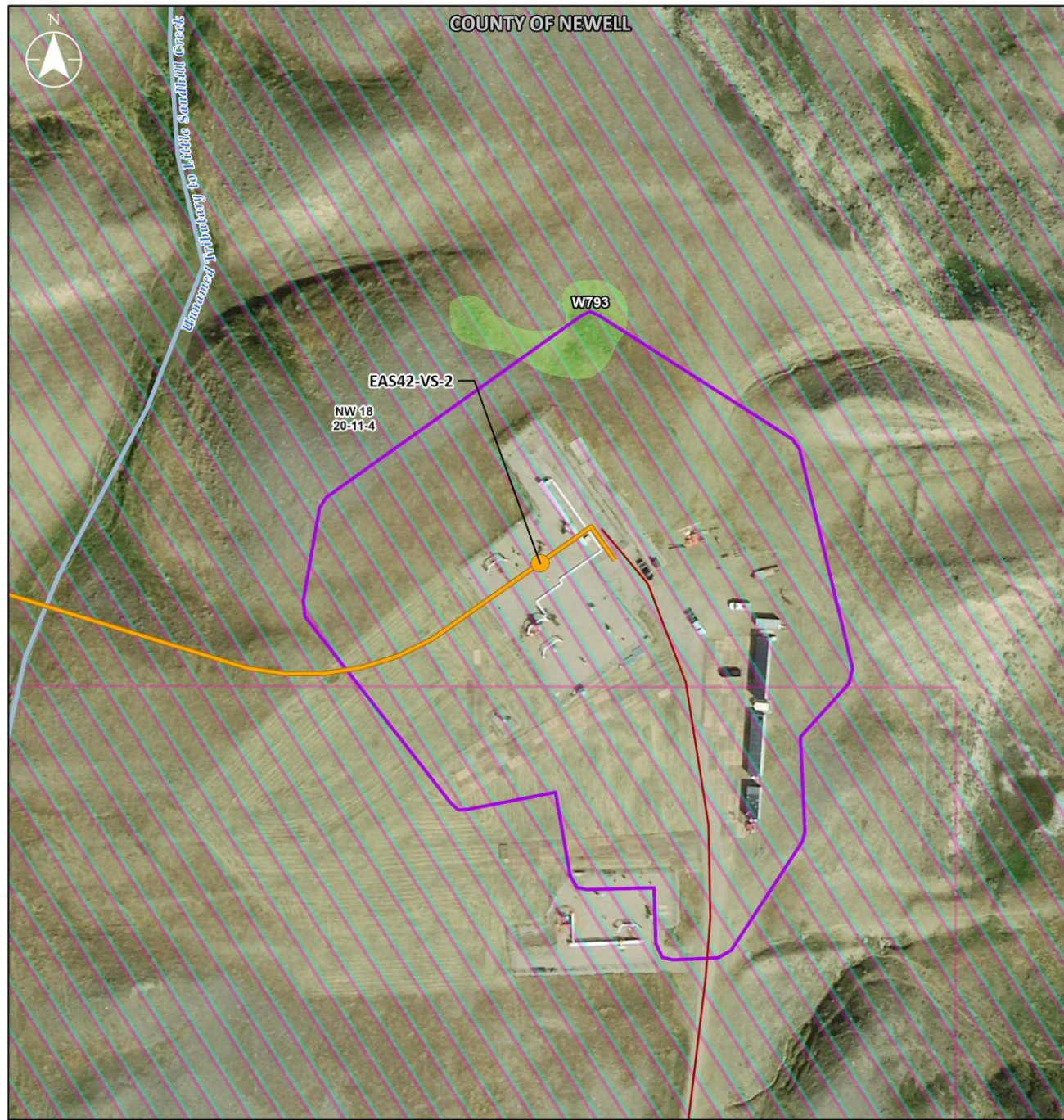


|   |   |  |
|---|---|--|
| <b>PROGRAM COMPONENT</b>                              | EAS ML Loop No. 3 (EAS ML Empress to Princess Bypass)                           |  |
| <b>PROJECT DEVELOPMENT AREA</b>                       | EAS42-VS-1  |  |
| <b>PLANNED ACTIVITIES</b>                             | Isolate NGTL GP line; decommission in place.                                    |  |
| <b>LEGAL LAND LOCATION</b>                            | NE 13-020-12 W4M  |  |
| <b>LAND OWNERSHIP</b>                                 | Freehold.   |  |
| <b>LAND USE</b>                                       | White Area; land use within the PDA is: grassland, industrial and tame pasture. |  |
| <b>RESOURCES AND CONSTRUCTION MITIGATION MEASURES</b> | <b>SOILS DESCRIPTION</b>  | <ul style="list-style-type: none"> <li>40% Brown Solodized Solonetz (Duchess), 40% Brown Solod (Gem), and 20% Solonetzic Brown Chernozem (Timko) developed on medium glaciolacustrine till. Well drained.</li> <li>Considerations: stripping limitations (discontinuous and thin topsoil, colour change not obvious, strip to hardpan ~25cm), moderate wind erosion risk, high water erosion risk on slopes &gt;15%, moderate compaction and rutting risk, moderately saline or sodic lower subsoils, and eluviated soils.</li> </ul>  |
|   | <b>SOIL HANDLING / SOIL SALVAGE DEPTH AND CRITERIA</b>                          | <ul style="list-style-type: none"> <li>See Environmental Notes for mitigation related to soil handling / soil salvage depth and criteria.</li> </ul>   |
|   | <b>WATERCOURSES</b>   | <ul style="list-style-type: none"> <li>No watercourses within or intersecting the PDA.</li> <li>No watercourses within 100 m of the PDA.</li> <li>See Environmental Notes for mitigation related to watercourses.</li> </ul>   |
|   | <b>FISHERIES RESOURCES</b>  | <ul style="list-style-type: none"> <li>No fish-bearing watercourses within or intersecting the PDA.</li> <li>No fish-bearing watercourses within 100 m of the PDA.</li> <li>See Environmental Notes for mitigation related to watercourses.</li> </ul>   |
|   | <b>VEGETATION</b>   | <ul style="list-style-type: none"> <li>PDA is within known rare vegetation:               <ul style="list-style-type: none"> <li>SARA-listed species ACIMS record for dwarf woollyheads (<i>Psilocarphus brevissimus</i> var. <i>brevissimus</i>, S2). Precise location for this record not available from ACIMS.</li> </ul> </li> <li>See Environmental Notes for mitigation related to vegetation and weeds.</li> </ul>  |
|   | <b>WETLANDS</b>   | <ul style="list-style-type: none"> <li>No wetlands within or intersecting the PDA.</li> <li>No wetlands identified within 30 m of the PDA.</li> <li>See Environmental Notes for mitigation related to wetlands.</li> </ul>   |
|   | <b>WILDLIFE</b>   | <ul style="list-style-type: none"> <li>See Environmental Notes for mitigation measures related to the following:               <ul style="list-style-type: none"> <li>Burrowing Owl Range (nesting period for the PDA is April 1 to August 15).</li> <li>Sharp-tailed Grouse Range (sensitive lekking period for the PDA is March 15 to June 15).</li> <li>Sensitive Amphibian Range (active amphibian season for the PDA is May 1 to September 30).</li> <li>Sensitive Raptor Range (for ferruginous hawk, golden eagle and prairie falcon [sensitive raptor nesting period for the PDA is March 15 to July 15]).</li> <li>Sensitive Snake Habitat and Sensitive Snake Hibernacula Range (active snake season for the PDA is March 15 to October 31).</li> <li>Migratory bird nesting period for the PDA is April 26 to August 14.</li> </ul> </li> </ul> |
|   | <b>HISTORICAL RESOURCES</b>   | <ul style="list-style-type: none"> <li>PDA intersects lands designated with HRV 5 for archaeological lands and HRV 5 and 3 for paleontological lands.</li> <li>HR Application will be submitted to Alberta Culture for HRA Approval. Any conditions of approval issued by Alberta Culture will be implemented by NGTL GP.</li> <li>See Environmental Notes for mitigation related to historical resources.</li> </ul>  |
|   | <b>TRADITIONAL LAND USE</b>   | <ul style="list-style-type: none"> <li>No known TLU sites within the PDA.</li> <li>See Environmental Notes for mitigation related to TLU.</li> </ul>   |
|   | <b>SITE CONTAMINATION CONSIDERATIONS</b>  | <ul style="list-style-type: none"> <li>See Environmental Notes for mitigation related to site contamination considerations.</li> </ul>   |
|   | <b>ACCESS</b>   | <ul style="list-style-type: none"> <li>Restrict all Project activities to the approved Project footprint. All Project traffic will adhere to safety and road closure regulations.</li> </ul>   |
|   | <b>RECLAMATION</b>  | <ul style="list-style-type: none"> <li>Topsoil or fill material imported must be clean, free of listed weeds, match surrounding soil texture and be approved in accordance with Company requirements prior to use.</li> <li>See Environmental Notes for mitigation related to reclamation.</li> </ul>  |
| <b>OTHER</b>  | <ul style="list-style-type: none"> <li>None.</li> </ul>                         |  |

**NOTES:**

Refer to the Environmental Protection Plan for a complete understanding of the mitigation requirements for the Project.

|   |                   |                                |                  |                                   |   |
|---|-------------------|--------------------------------|------------------|-----------------------------------|---|
| SHEET REVISION:<br>Rev 1  | INTERNAL ID:<br>0 | PROJECTION:<br>10TM AEP Forest | DATUM:<br>NAD 83 | PREPARED BY:<br><b>Jacobs</b>     | <b>ENVIRONMENTAL SITE INFORMATION SHEET</b><br><b>2025 DECOMMISSIONING PROGRAM</b><br>EAS ML Empress to Princess Bypass |
| Project Data: TransCanada Pipelines Ltd. Jacobs 2025; Transportation Atlas 2019 Alberta Municipal Boundaries: Atlas 2021; Hydrology: IHS 2011; NRCAN 2009; Wetlands: Jacobs 2025; Historical Resources: Alberta Culture and Tourism 2014; Vegetation: Alberta Environment and Parks 2022; Wildlife Sensitivity: Alberta Environment and Protected Areas 2024. |                   | DATE:<br>December 2025         |                  | PREPARED FOR:<br><b>TC Energy</b> |   |
| Imagery: Southern Alberta Partners, Vector, Esri, HERE, Garmin, FMO, NOAA, USGS, EPA, AAFIC.  |                   |                                |                  |                                   |   |



AERIAL PHOTOGRAPHY

|                                  |                  |                                |                                      |
|----------------------------------|------------------|--------------------------------|--------------------------------------|
| <b>Project Data</b>              | <b>Base Data</b> | <b>Historic Resource Value</b> | <b>Wetlands</b>                      |
| ● Isolation Point                | — Road           | □ Historic Resource Value - 3  | ■ Temporary Graminoid Marsh M[G] [I] |
| — Decommissioning Pipeline       | — Watercourse    | □ Historic Resource Value - 5  |                                      |
| ▭ Project Development Area (PDA) |                  |                                |                                      |

Rare vegetation: PDAs are within ACIMS record for dwarf woollyheads. The entire map extent is within Burrowing Owl Range, Sensitive Amphibian Range, Sensitive Raptor Range, Sensitive Snake Hibernacula Range, Sensitive Snake Habitat, Sharp-tailed Grouse Range.

|   |  |  |
|---|--|--|
| <b>PROGRAM COMPONENT</b>                              | EAS ML Loop No. 3 (EAS ML Empress to Princess Bypass)          |  |
| <b>PROJECT DEVELOPMENT AREA</b>                       | EAS42-VS-2   |  |
| <b>PLANNED ACTIVITIES</b>                             | Isolate NGTL GP line; decommission in place.                   |  |
| <b>LEGAL LAND LOCATION</b>                            | NW 18-020-11 W4M   |  |
| <b>LAND OWNERSHIP</b>                                 | Freehold.  |  |
| <b>LAND USE</b>                                       | White Area; land use within the PDA is: grassland, industrial. |  |
| <b>RESOURCES AND CONSTRUCTION MITIGATION MEASURES</b> | <b>SOILS DESCRIPTION</b>                                       | <ul style="list-style-type: none"> <li>40% Brown Solodized Solonetz (Duchess), 40% Brown Solod (Gem), and 20% Solonetzic Brown Chernozem (Timko) developed on medium glaciolacustrine till. Well drained.</li> <li>-Considerations: stripping limitations (discontinuous and thin topsoil, colour change not obvious, strip to hardpan ~25cm), moderate wind erosion risk, high water erosion risk on slopes &gt;15%, moderate compaction and rutting risk, moderately saline or sodic lower subsoils, and eluviated soils.</li> </ul>   |
|   | <b>SOIL HANDLING / SOIL SALVAGE DEPTH AND CRITERIA</b>         | <ul style="list-style-type: none"> <li>See Environmental Notes for mitigation related to soil handling / soil salvage depth and criteria.</li> </ul>   |
|   | <b>WATERCOURSES</b>  | <ul style="list-style-type: none"> <li>No watercourses within or intersecting the PDA.</li> <li>PDA is within 75-60 m of an unnamed tributary to Little Sandhill Creek (21827).</li> <li>See Environmental Notes for mitigation related to watercourses.</li> </ul>  |
|   | <b>FISHERIES RESOURCES</b>                                     | <ul style="list-style-type: none"> <li>PDA is within 75-60 m of an unnamed tributary to Little Sandhill Creek (21827). [The watercourse is an unmapped Class C water body with a RAP of April 16 to July 15. Fish bearing status is unknown.]</li> <li>See Environmental Notes for mitigation related to watercourses.</li> </ul>  |
|   | <b>VEGETATION</b>  | <ul style="list-style-type: none"> <li>PDA is within known rare vegetation:               <ul style="list-style-type: none"> <li>SARA-listed species ACIMS record for dwarf woollyheads (<i>Psilocarphus brevissimus</i> var. <i>brevissimus</i>, S2). Precise location for this record not available from ACIMS.</li> </ul> </li> <li>See Environmental Notes for mitigation related to vegetation and weeds.</li> </ul>  |
|   | <b>WETLANDS</b>  | <ul style="list-style-type: none"> <li>No wetlands within or intersecting the PDA.</li> <li>One Temporary Graminoid Marsh M[G][II] (W793) identified within 30 m of the PDA. COP notification is required if wetland is temporarily disturbed.</li> <li>One Temporary Graminoid Marsh M[G][II] (W793) intersects PDA. COP notification is required.</li> <li>See Environmental Notes for mitigation related to wetlands.</li> </ul>  |
|   | <b>WILDLIFE</b>  | <ul style="list-style-type: none"> <li>See Environmental Notes for mitigation measures related to the following:               <ul style="list-style-type: none"> <li>Burrowing Owl Range (nesting period for the PDA is April 1 to August 15).</li> <li>Sharp-tailed Grouse Range (sensitive lekking period for the PDA is March 15 to June 15).</li> <li>Sensitive Amphibian Range (active amphibian season for the PDA is May 1 to September 30).</li> <li>Sensitive Raptor Range (for ferruginous hawk, golden eagle and prairie falcon [sensitive raptor nesting period for the PDA is March 15 to July 15]).</li> <li>Sensitive Snake Habitat and Sensitive Snake Hibernacula Range (active snake season for the PDA is March 15 to October 31).</li> <li>Migratory bird nesting period for the PDA is April 26 to August 14.</li> </ul> </li> </ul> |
|   | <b>HISTORICAL RESOURCES</b>                                    | <ul style="list-style-type: none"> <li>PDA intersections lands designated as HRV 5 for archaeological lands and HRV 5 and 3 for paleontological lands.</li> <li>HR Application will be submitted to Alberta Culture for HRA Approval. Any conditions of approval issued by Alberta Culture will be implemented by NGTL-CP.</li> <li>See Environmental Notes for mitigation related to historical resources.</li> </ul>   |
|   | <b>TRADITIONAL LAND USE</b>                                    | <ul style="list-style-type: none"> <li>No known TLU sites within the PDA.</li> <li>See Environmental Notes for mitigation related to TLU.</li> </ul>   |
|   | <b>SITE CONTAMINATION CONSIDERATIONS</b>                       | <ul style="list-style-type: none"> <li>See Environmental Notes for mitigation related to site contamination considerations.</li> </ul>   |
|   | <b>ACCESS</b>  | <ul style="list-style-type: none"> <li>Restrict all Project activities to the approved Project footprint. All Project traffic will adhere to safety and road closure regulations.</li> </ul>   |
|   | <b>RECLAMATION</b>   | <ul style="list-style-type: none"> <li>Topsoil or fill material imported must be clean, free of listed weeds, match surrounding soil texture and be approved in accordance with Company requirements prior to use.</li> <li>See Environmental Notes for mitigation related to reclamation.</li> </ul>  |
| <b>OTHER</b>  | <ul style="list-style-type: none"> <li>None.</li> </ul>        |  |

**NOTES:**

Refer to the Environmental Protection Plan for a complete understanding of the mitigation requirements for the Project.

|       |   |                |        |
|-------|---|----------------|--------|
| Rev 1 | 0 | 10TMAEP Forest | NAD 83 |
|-------|---|----------------|--------|

Project Data: TransCanada Pipelines Ltd. Jacobs 2025; Transportation: Alstom 2019; Alberta Municipal Boundaries: Alstom 2021; Planning: Alstom 2011; NRCan 2005; Wetlands: Jacobs 2025; Hydro: Province of Alberta Culture and Tourism 2024; Vegetation: Alberta Environment and Parks 2022; Wildlife: Soudbury, Alberta Environment and Protected Areas 2024; Geology: Southern Alberta Pathways, Vanier, Eau, NEBE, Spains, PAO, NOAA, EPA, AARFC, NRCan.

DATE: December 2025

PREPARED FOR: **Jacobs** and **TC Energy**

**ENVIRONMENTAL SITE INFORMATION SHEET**  
2025 DECOMMISSIONING PROGRAM  
EAS ML Empress to Princess Bypass

Formatted Table

**Commented [AA1]:** Is this the same watercourse as mentioned above? Unnamed trib to Little Sandhill Creek? Please specify.

**Commented [LC2R1]:** Addressed

**Commented [DM3]:** This is not overly clear. Does this mean the PDA is within the area of the RP habitat? Or are there known locations from ACIMS that are in the PDA? If known occurrences and cannot be shown due to confidentiality then this needs to somehow be communicated. Are the potential RP's associated with wetland W793, and presence/absence determined in summer field study? Similar situation to Tilley South in 2024 program?

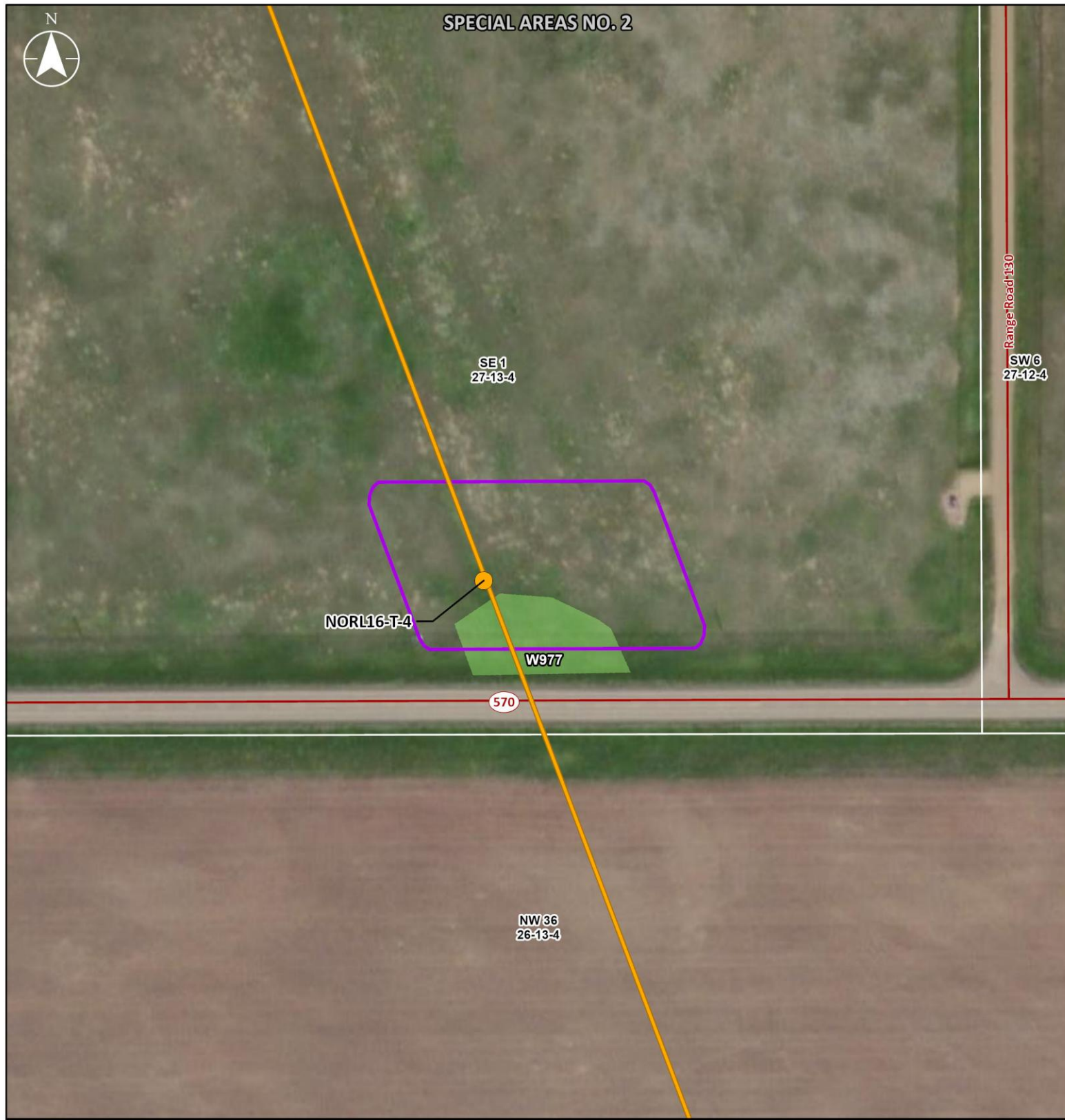
**Commented [SC4R3]:** @Foreman, Kristin please review if edits are needed, then we might need to apply edits to the other ESISs in the Rev A folder

**Commented [KF5R3]:** For this and EAS42-VS-1, the dwarf woollyhead record is buffered for confidentiality by ACIMS. We do not know exactly where this species occurs in the whole TWP. This is why we are doing field work. I will add another edit to make this clearer.

**Commented [AA6]:** What counts as disturbance, if there is no PDA overlap, why the suggestion a COP is required? Be consistent with COP notification application throughout ESIS.

Overall comment: Are we saying COP is required if there is overlap or no overlaps just near features? Or both? @Tessa Bellissimo [Contractor]

**Commented [SC7R6]:** @Koloff, Julie please review if edits are needed, then we might need to apply edits to the other ESISs in the Rev A folder



AERIAL PHOTOGRAPHY

| Legend                           |                                      |
|----------------------------------|--------------------------------------|
| <b>Project Data</b>              | <b>Base Data</b>                     |
| ● Isolation Point                | — Road                               |
| — Decommissioning Pipeline       | ■ Temporary Graminoid Marsh M[G] [I] |
| ▭ Project Development Area (PDA) |                                      |

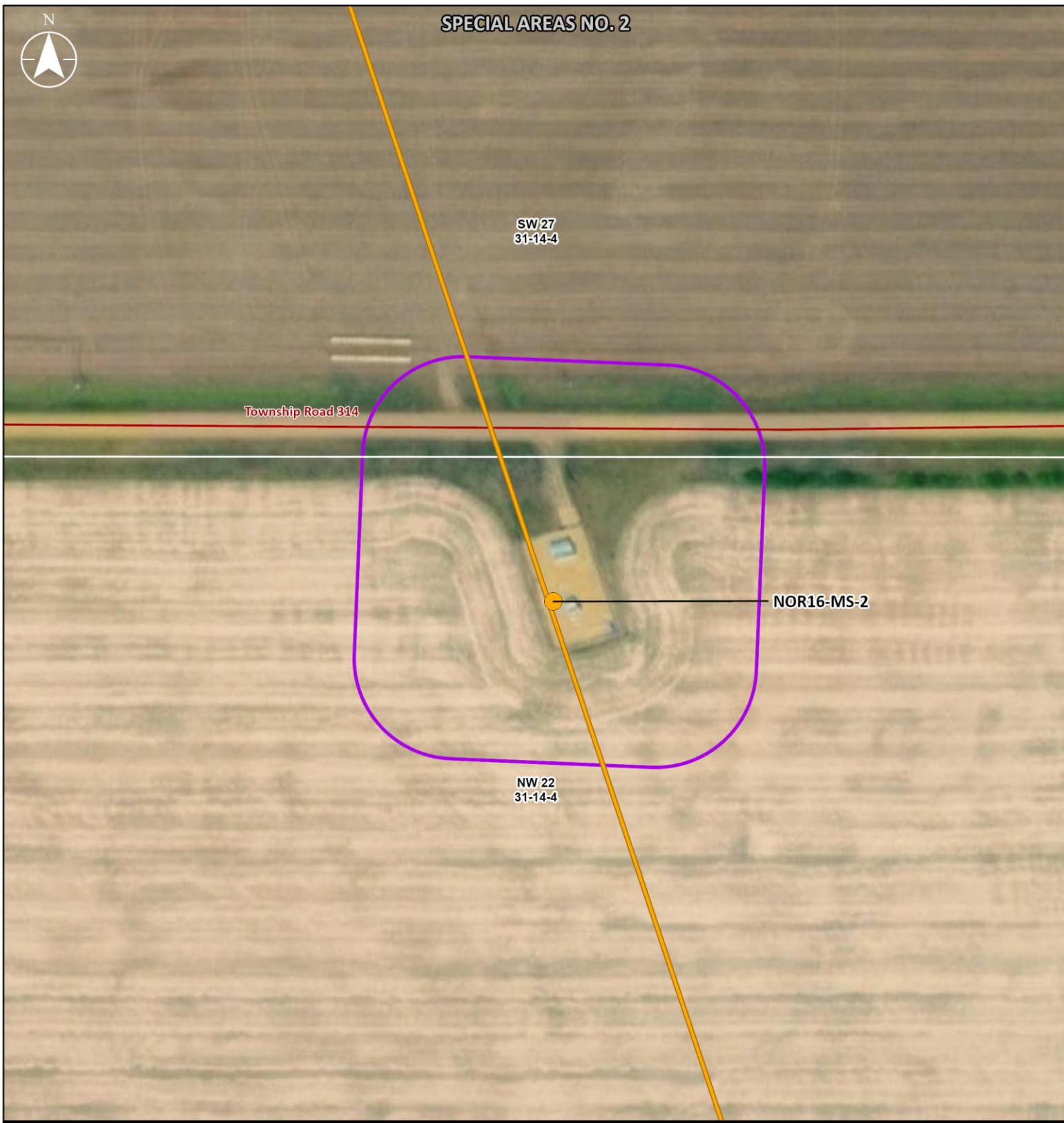
The entire map extent is within Burrowing Owl Range, Sensitive Raptor Range, Sharp-tailed Grouse Range.



|   |   |  |
|---|---|--|
| <b>PROGRAM COMPONENT</b>                              | North Lateral Extension Stage I Brooks                  |  |
| <b>PROJECT DEVELOPMENT AREA</b>                       | NORL16-T-4  |  |
| <b>PLANNED ACTIVITIES</b>                             | Isolate NGTL GP line; decommission in place.            |  |
| <b>LEGAL LAND LOCATION</b>                            | NW-36-026-13SE 01-027-13-04 W4M                         |  |
| <b>LAND OWNERSHIP</b>                                 | Freehold  |  |
| <b>LAND USE</b>                                       | White Area; land use within the PDA is: cultivated.     |  |
| <b>RESOURCES AND CONSTRUCTION MITIGATION MEASURES</b> | <b>SOILS DESCRIPTION</b>                                | <ul style="list-style-type: none"> <li>100% Brown Solodized Solonetz (Sunnynook, Gopher, Hemaruka) developed over moderately fine till, and coarse eolian or glaciofluvial/till. Well drained.</li> <li>Considerations: stripping limitations (not obvious colour change from topsoil to subsoil, discontinuous and very thin topsoil), moderate to high wind erosion risk, moderate to high water erosion risk on slopes &gt;9%, saline/sodic subsoils, Solonetzic B horizons, face instability, and low to moderate compaction and rutting risk.</li> </ul>  |
|   | <b>SOIL HANDLING / SOIL SALVAGE DEPTH AND CRITERIA</b>  | <ul style="list-style-type: none"> <li>See Environmental Notes for mitigation related to soil handling / soil salvage depth and criteria.</li> </ul>   |
|   | <b>WATERCOURSES</b>                                     | <ul style="list-style-type: none"> <li>No watercourses within or intersecting the PDA.</li> <li>No watercourses within 100 m of the PDA.</li> <li>See Environmental Notes for mitigation related to watercourses.</li> </ul>   |
|   | <b>FISHERIES RESOURCES</b>                              | <ul style="list-style-type: none"> <li>No fish-bearing watercourses within or intersecting the PDA.</li> <li>No fish-bearing watercourses within 100 m of the PDA.</li> <li>See Environmental Notes for mitigation related to watercourses.</li> </ul>   |
|   | <b>VEGETATION</b>                                       | <ul style="list-style-type: none"> <li>No rare vegetation concerns.</li> <li>See Environmental Notes for mitigation related to vegetation and weeds.</li> </ul>  |
|   | <b>WETLANDS</b>   | <ul style="list-style-type: none"> <li>One Temporary Graminoid Marsh M[G][I] (W977) intersects PDA. COP notification is required.</li> <li>No wetlands within or intersecting the PDA.</li> <li>No wetlands identified within 30 m of the PDA.</li> <li>See Environmental Notes for mitigation related to wetlands.</li> </ul>   |
|   | <b>WILDLIFE</b>   | <ul style="list-style-type: none"> <li>See Environmental Notes for mitigation measures related to the following: <ul style="list-style-type: none"> <li>Burrowing Owl Range (nesting period for the PDA is April 1 to August 15).</li> <li>Sharp-tailed Grouse Range (sensitive lekking period for the PDA is March 15 to June 15).</li> <li>Sensitive Raptor Range (for ferruginous hawk, golden eagle and prairie falcon [sensitive raptor nesting period for the PDA is March 15 to July 15]).</li> <li>Migratory bird nesting period for the PDA is April 26 to August 14.</li> </ul> </li> </ul>          |
|   | <b>HISTORICAL RESOURCES</b>                             | <ul style="list-style-type: none"> <li>No known HRV lands are present.</li> <li><del>HRV lands intersect other PDAs on the lateral and HRA Approval is therefore required per direction from Alberta Culture for the 2025 Abandonment Program. HR Application will be submitted to Alberta Culture for HRA Approval. Any conditions of approval issued by Alberta Culture will be implemented by NGTL GP. HRA Approval not required per direction from Alberta Culture for the 2025 Decommissioning Program.</del></li> <li>See Environmental Notes for mitigation related to historical resources.</li> </ul> |
|   | <b>TRADITIONAL LAND USE</b>                             | <ul style="list-style-type: none"> <li>No known TLU sites within the PDA.</li> <li>See Environmental Notes for mitigation related to TLU.</li> </ul>   |
|   | <b>SITE CONTAMINATION CONSIDERATIONS</b>                | <ul style="list-style-type: none"> <li>See Environmental Notes for mitigation related to site contamination considerations.</li> </ul>   |
|   | <b>ACCESS</b>   | <ul style="list-style-type: none"> <li>Restrict all Project activities to the approved Project footprint. All Project traffic will adhere to safety and road closure regulations.</li> </ul>   |
|   | <b>RECLAMATION</b>                                      | <ul style="list-style-type: none"> <li>Topsoil or fill material imported must be clean, free of listed weeds, match surrounding soil texture and be approved in accordance with Company requirements prior to use.</li> <li>See Environmental Notes for mitigation related to reclamation.</li> </ul>  |
| <b>OTHER</b>  | <ul style="list-style-type: none"> <li>None.</li> </ul> |  |

NOTES:  
Refer to the Environmental Protection Plan for a complete understanding of the mitigation requirements for the Project.

|  |                 |                           |                |                              |  |                                  |
|--|-----------------|---------------------------|----------------|------------------------------|--|----------------------------------|
| SHEET REVISION<br>Rev 1  | ITERIAL ID<br>0 | PROJECT<br>10TMAEP Forest | DATE<br>NAD 83 | PREPARED BY<br><b>Jacobs</b> | <b>ENVIRONMENTAL SITE INFORMATION SHEET</b><br><b>2025 DECOMMISSIONING PROGRAM</b><br>North Lateral Extension Stage I Brooks |                                  |
| <small>Project Data: TransCanada Pipelines Ltd. Jacobs 2025; Transportation Atlas IS 2019 Alberta Municipal Boundaries: ABALIS 2021; Hydrology: IHS 2011; NRCan 2008 Wetlands: Jacobs 2025; History: Resources: Alberta Culture and Tourism 2024; Vegetation: Alberta Environment and Parks 2022; Wildlife Sensitivity: Alberta Environment and Protected Areas 2024<br/>Imagery: Vector, Esri, HERE, Garmin, FAO, NOAA, EPR, AARF, NRCan.</small> |                 |                           |                | DATE<br>December 2025        |  | PREPARED FOR<br><b>TC Energy</b> |
|  |                 |                           |                |                              |  |                                  |



AERIAL PHOTOGRAPHY

**Legend**

**Project Data**

- Isolation Point
- Decommissioning Pipeline
- Project Development Area (PDA)

**Base Data**

- Road

The entire map extent is within Burrowing Owl Range, Sensitive Raptor Range, Sharp-tailed Grouse Range.

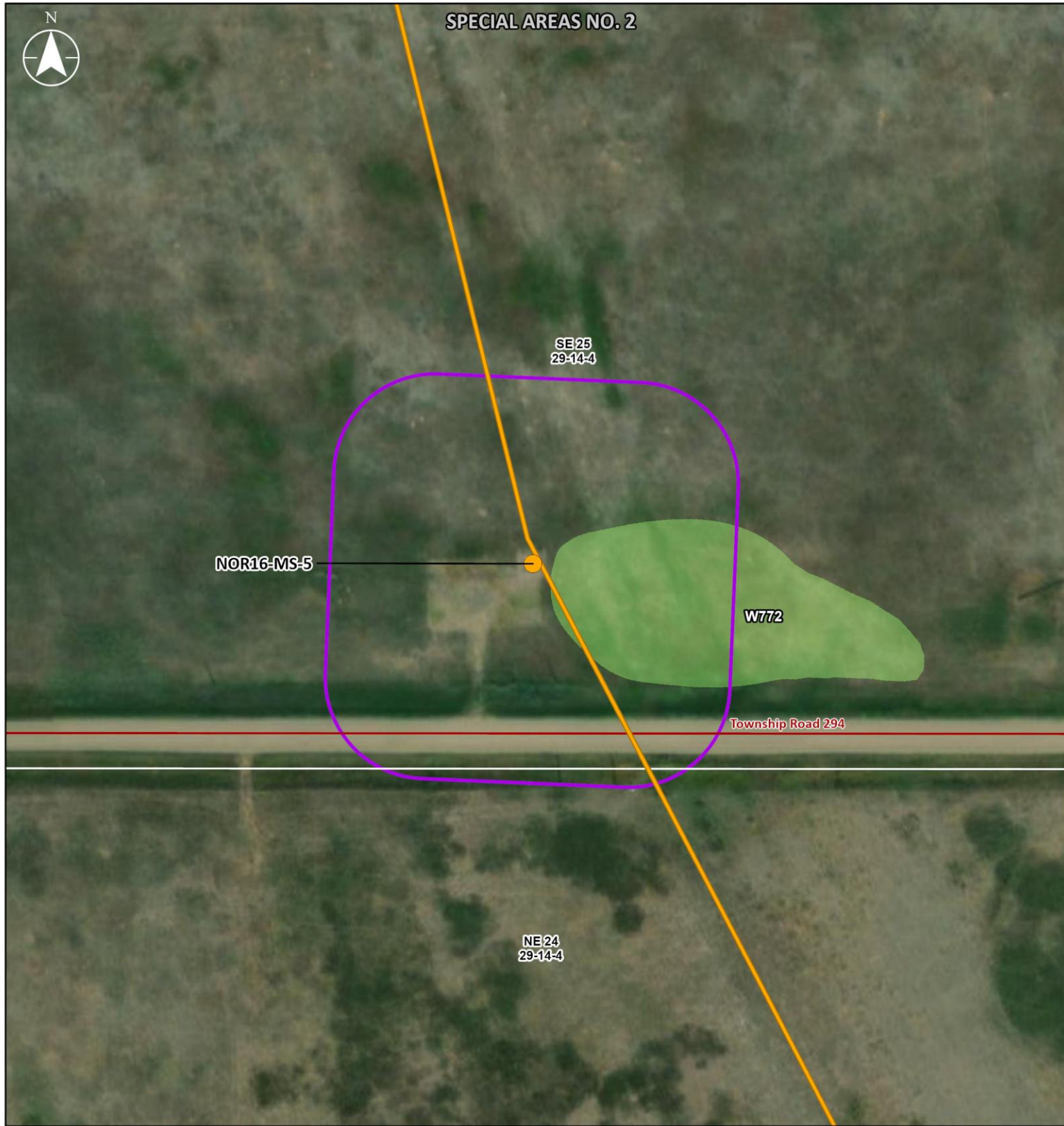


|   |  |  |
|---|--|--|
| <b>PROGRAM COMPONENT</b>                              | North Lateral Extension Stage I Brooks   |  |
| <b>PROJECT DEVELOPMENT AREA</b>                       | NOR16-MS-2   |  |
| <b>PLANNED ACTIVITIES</b>                             | Isolate NGTL GP line; decommission in place.                                     |  |
| <b>LEGAL LAND LOCATION</b>                            | SW 27-031-14 W4M; NW 22-031-14 W4M   |  |
| <b>LAND OWNERSHIP</b>                                 | Freehold.  |  |
| <b>LAND USE</b>                                       | White Area; land use within the PDA is: cultivated, industrial and tame pasture. |  |
| <b>RESOURCES AND CONSTRUCTION MITIGATION MEASURES</b> | <b>SOILS DESCRIPTION</b>   | <ul style="list-style-type: none"> <li>100% Dark Brown Solodized Sononetz (Wiese) developed on moderately fine glaciolacustrine clay, silty clay, and sandy clay. Well drained.</li> <li>Considerations: no stripping limitations, low wind erosion risk, high water erosion risk on slopes 15%, moderate compaction and rutting risk, and saline or sodic lower subsoil.</li> </ul>   |
|   | <b>SOIL HANDLING / SOIL SALVAGE DEPTH AND CRITERIA</b>                           | <ul style="list-style-type: none"> <li>See Environmental Notes for mitigation related to soil handling / soil salvage depth and criteria.</li> </ul>   |
|   | <b>WATERCOURSES</b>  | <ul style="list-style-type: none"> <li>No watercourses within or intersecting the PDA.</li> <li>No watercourses within 100 m of the PDA.</li> <li>See Environmental Notes for mitigation related to watercourses.</li> </ul>   |
|   | <b>FISHERIES RESOURCES</b>   | <ul style="list-style-type: none"> <li>No fish-bearing watercourses within or intersecting the PDA.</li> <li>No fish-bearing watercourses within 100 m of the PDA.</li> <li>See Environmental Notes for mitigation related to watercourses.</li> </ul>   |
|   | <b>VEGETATION</b>  | <ul style="list-style-type: none"> <li>No rare vegetation concerns.</li> <li>See Environmental Notes for mitigation related to vegetation and weeds.</li> </ul>  |
|   | <b>WETLANDS</b>  | <ul style="list-style-type: none"> <li>No wetlands within or intersecting the PDA.</li> <li>No wetlands identified within 30 m of the PDA.</li> <li>See Environmental Notes for mitigation related to wetlands.</li> </ul>   |
|   | <b>WILDLIFE</b>  | <ul style="list-style-type: none"> <li>See Environmental Notes for mitigation measures related to the following: <ul style="list-style-type: none"> <li>Burrowing Owl Range (nesting period for the PDA is April 1 to August 15)</li> <li>Sharp-tailed Grouse Range (sensitive lekking period for the PDA is March 15 to June 15)</li> <li>Sensitive Raptor Range (for ferruginous hawk, golden eagle and prairie falcon [sensitive raptor nesting period for the PDA is March 15 to July 15])</li> <li>Migratory bird nesting period for the PDA is April 26 to August 14.</li> </ul> </li> </ul> |
|   | <b>HISTORICAL RESOURCES</b>  | <ul style="list-style-type: none"> <li>No known HRV lands are present.</li> <li>HRA Approval not required per direction from Alberta Culture for the 2025 Decommissioning Program.</li> <li>See Environmental Notes for mitigation related to historical resources.</li> </ul>   |
|   | <b>TRADITIONAL LAND USE</b>  | <ul style="list-style-type: none"> <li>No known TLU sites within the PDA.</li> <li>See Environmental Notes for mitigation related to TLU.</li> </ul>   |
|   | <b>SITE CONTAMINATION CONSIDERATIONS</b>   | <ul style="list-style-type: none"> <li>See Environmental Notes for mitigation related to site contamination considerations.</li> </ul>   |
|   | <b>ACCESS</b>  | <ul style="list-style-type: none"> <li>Restrict all Project activities to the approved Project footprint. All Project traffic will adhere to safety and road closure regulations.</li> </ul>   |
|   | <b>RECLAMATION</b>   | <ul style="list-style-type: none"> <li>Topsoil or fill material imported must be clean, free of listed weeds, match surrounding soil texture and be approved in accordance with Company requirements prior to use.</li> <li>See Environmental Notes for mitigation related to reclamation.</li> </ul>  |
|   | <b>OTHER</b>   | <ul style="list-style-type: none"> <li>None.</li> </ul>  |

**NOTES:**

Refer to the Environmental Protection Plan for a complete understanding of the mitigation requirements for the Project.

|  |                   |                                |                  |                               |  |                                   |
|--|-------------------|--------------------------------|------------------|-------------------------------|--|-----------------------------------|
| SHEET REVISION:<br>Rev 1   | INTERNAL ID:<br>0 | PROJECTION:<br>10TM AEP Forest | DATUM:<br>NAD 83 | PREPARED BY:<br><b>Jacobs</b> | <b>ENVIRONMENTAL SITE INFORMATION SHEET</b><br><b>2025 DECOMMISSIONING PROGRAM</b><br>North Lateral Extension Stage I Brooks |                                   |
| <small>Project Data: TransCanada Pipelines Ltd. Jacobs 2025; Transportation: Atlas IS 2019; Alberta Municipal Boundaries: Atlas IS 2021; Hydrology: IHS 2011; NRCan 2009; Wetlands: Jacobs 2025; Fisheries Resources: Alberta Culture and Tourism 2024; Vegetation: Alberta Environment and Parks 2022; Wildlife Sensitivity: Alberta Environment and Protected Areas 2024.<br/>Imagery: Vector, Esri, HERE, IPAD, NOAA, USGS, EPA, AAPC, NRCan. Source: Esri, Vector, Earthstar<br/>*Commonly</small> |                   |                                |                  | DATE:<br>January 2026         |  | PREPARED FOR:<br><b>TC Energy</b> |
|  |                   |                                |                  | Original Page Size: 11 x 17   |  |                                   |



|   |   |  |
|---|---|--|
| <b>PROGRAM COMPONENT</b>                              | North Lateral Extension Stage I Brooks  |  |
| <b>PROJECT DEVELOPMENT AREA</b>                       | NOR16-MS-5  |  |
| <b>PLANNED ACTIVITIES</b>                             | Isolate NGTL GP line; decommission in place.  |  |
| <b>LEGAL LAND LOCATION</b>                            | SE 25-029-14 W4M  |  |
| <b>LAND OWNERSHIP</b>                                 | Freehold.   |  |
| <b>LAND USE</b>                                       | White Area; land use within the PDA is: grassland, industrial and wetland.  |  |
| <b>RESOURCES AND CONSTRUCTION MITIGATION MEASURES</b> | <b>SOILS DESCRIPTION</b>  | <ul style="list-style-type: none"> <li>80% Orthic Dark Brown Chernozem (Metisko) and 20% Dark Brown Solodized Solonetz (Sullivan Lake) developed on moderately coarse glaciofluvial and till. Well drained.</li> <li>Considerations: stripping limitations (seasonally high watertable in spring, Solonetzic B horizon, moderately calcareous first C horizon), nonstoney, high wind erosion risk, moderate water erosion risk on slopes &gt;15%, low compaction and rutting risk, face instability, and saline or sodic lower subsoils.</li> </ul>  |
|   | <b>SOIL HANDLING / SOIL SALVAGE DEPTH AND CRITERIA</b>  | <ul style="list-style-type: none"> <li>See Environmental Notes for mitigation related to soil handling / soil salvage depth and criteria.</li> </ul>   |
|   | <b>WATERCOURSES</b>   | <ul style="list-style-type: none"> <li>No watercourses within or intersecting the PDA.</li> <li>No watercourses within 100 m of the PDA.</li> <li>See Environmental Notes for mitigation related to watercourses.</li> </ul>   |
|   | <b>FISHERIES RESOURCES</b>  | <ul style="list-style-type: none"> <li>No fish-bearing watercourses within or intersecting the PDA.</li> <li>No fish-bearing watercourses within 100 m of the PDA.</li> <li>See Environmental Notes for mitigation related to watercourses.</li> </ul>   |
|   | <b>VEGETATION</b>   | <ul style="list-style-type: none"> <li>No rare vegetation concerns.</li> <li>See Environmental Notes for mitigation related to vegetation and weeds.</li> </ul>  |
|   | <b>WETLANDS</b>   | <ul style="list-style-type: none"> <li>One Temporary Graminoid Marsh M[G][II] (W772) intersects PDA. COP notification is required.</li> <li>See Environmental Notes related to wetland mitigation.</li> </ul>  |
|   | <b>WILDLIFE</b>   | <ul style="list-style-type: none"> <li>See Environmental Notes for mitigation measured related to the following: <ul style="list-style-type: none"> <li>Burrowing Owl Range (nesting period for the PDA is April 1 to August 15)</li> <li>Sharp-tailed Grouse Range (sensitive lekking period for the PDA is March 15 to June 15)</li> <li>Sensitive Raptor Range (for ferruginous hawk, golden eagle and prairie falcon [sensitive raptor nesting period for the PDA is March 15 to July 15])</li> <li>Migratory bird nesting period for the PDA is April 26 to August 14.</li> </ul> </li> </ul> |
|   | <b>HISTORICAL RESOURCES</b>   | <ul style="list-style-type: none"> <li>No known HRV lands are present.</li> <li>HRA Approval not required per direction from Alberta Culture for the 2025 Decommissioning Program.</li> <li>See Environmental Notes for mitigation related to historical resources.</li> </ul>   |
|   | <b>TRADITIONAL LAND USE</b>   | <ul style="list-style-type: none"> <li>No known TLU sites within the PDA.</li> <li>See Environmental Notes for mitigation related to TLU.</li> </ul>   |
|   | <b>SITE CONTAMINATION CONSIDERATIONS</b>  | <ul style="list-style-type: none"> <li>See Environmental Notes for mitigation related to site contamination considerations.</li> </ul>   |
| <b>ACCESS</b>   | <ul style="list-style-type: none"> <li>Restrict all Project activities to the approved Project footprint. All Project traffic will adhere to safety and road closure regulations.</li> </ul>  |  |
| <b>RECLAMATION</b>                                    | <ul style="list-style-type: none"> <li>Topsoil or fill material imported must be clean, free of listed weeds, match surrounding soil texture and be approved in accordance with Company requirements prior to use.</li> <li>See Environmental Notes for mitigation related to reclamation.</li> </ul> |  |
| <b>OTHER</b>  | None.   |  |

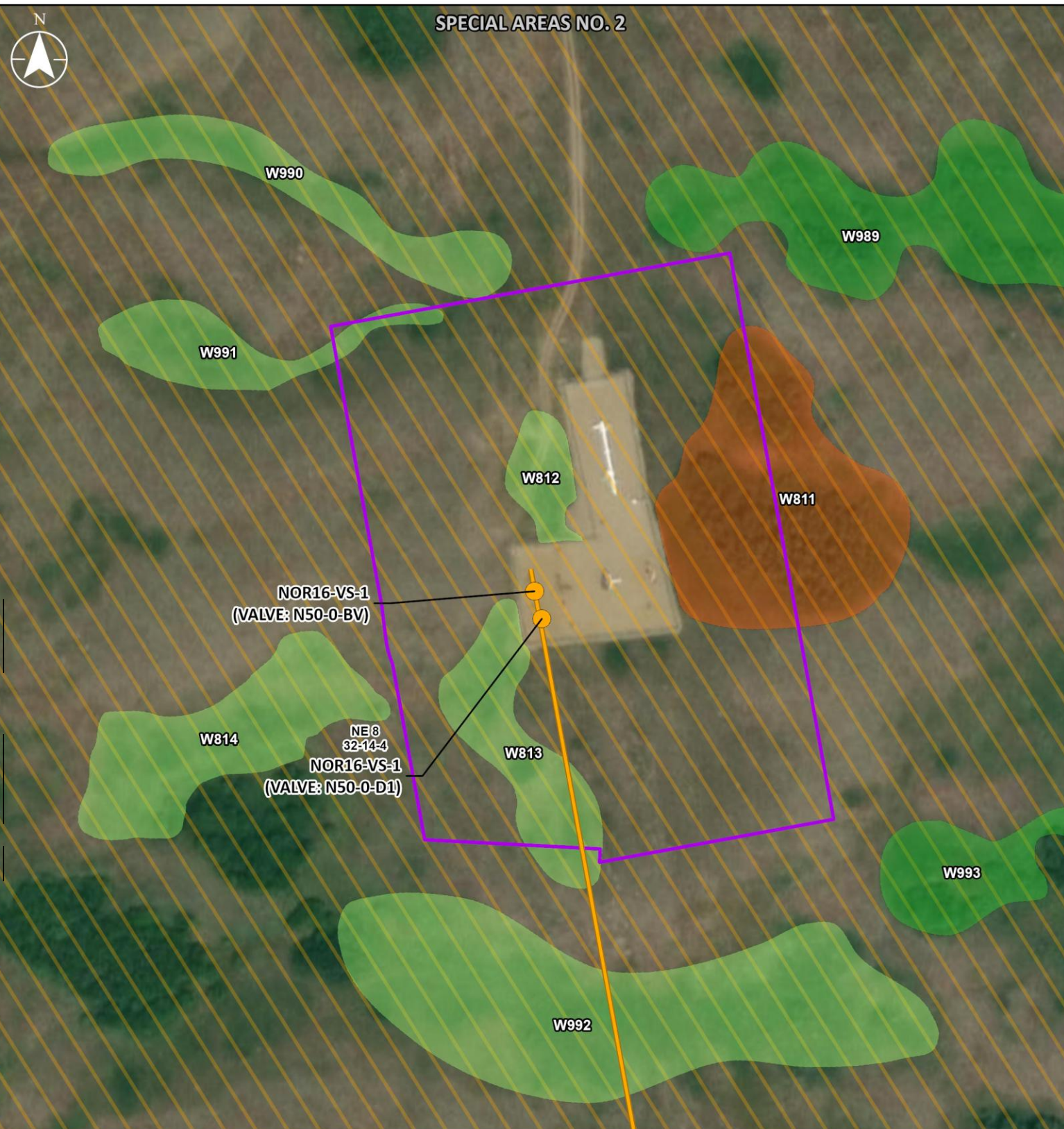
**NOTES:**  
Refer to the Environmental Protection Plan for a complete understanding of the mitigation requirements for the Project.

AERIAL PHOTOGRAPHY

|                                  |                  |                                      |
|----------------------------------|------------------|--------------------------------------|
| <b>Legend</b>                    |                  |                                      |
| <b>Project Data</b>              | <b>Base Data</b> | <b>Wetlands</b>                      |
| ● Isolation Point                | — Road           | ■ Temporary Graminoid Marsh M[G][II] |
| — Decommissioning Pipeline       |                  |                                      |
| □ Project Development Area (PDA) |                  |                                      |

The entire map extent is within Burrowing Owl Range, Sensitive Raptor Range, Sharp-tailed Grouse Range.

|   |                 |                               |  |                              |
|---|-----------------|-------------------------------|--|------------------------------|
| SHEET REVISION<br>Rev 1   | ITERIAL ID<br>0 | PROJECTION<br>10TM AEP Forest | DATUM<br>NAD 83  | PREPARED BY<br><b>Jacobs</b> |
| <small>Project Data: TransCanada Pipelines Ltd. Jacobs 2025; Transportation: Atlatl 2019; Alberta Municipal Boundaries: Atlatl 2012; Hydrology: H20 2011; HRCan 2008; Wetlands: Jacobs 2025; Historical Resources: Alberta Culture and Tourism 2014; Vegetation: Alberta Environment and Parks 2022; Wildlife Sensitivity: Alberta Environment and Protected Areas 2024<br/>Imagery: Source: Esri, Vector: FAO, NOAA, USGS, EPA, AAPFC, HRCCan, Vector: Garmin, FAO, NOAA, EPA, AAU</small> |                 |                               |  | DATE<br>January 2026         |
|   |                 |                               | <b>ENVIRONMENTAL SITE INFORMATION SHEET</b><br><br><b>2025 DECOMMISSIONING PROGRAM</b><br>North Lateral Extension Stage I Brooks |                              |
|   |                 |                               |  | PREPARED FOR<br>             |



AERIAL PHOTOGRAPHY

| Legend                           |                                     |
|----------------------------------|-------------------------------------|
| <b>Project Data</b>              | <b>Historic Resource Value</b>      |
| ● Isolation Point                | Historic Resource Value - 4         |
| — Decommissioning Pipeline       |                                     |
| ▭ Project Development Area (PDA) |                                     |
|                                  | <b>Wetlands</b>                     |
|                                  | Seasonal Graminoid Marsh M[G] [III] |
|                                  | Shrubby Swamp S[S]                  |
|                                  | Temporary Graminoid Marsh M[G] [II] |

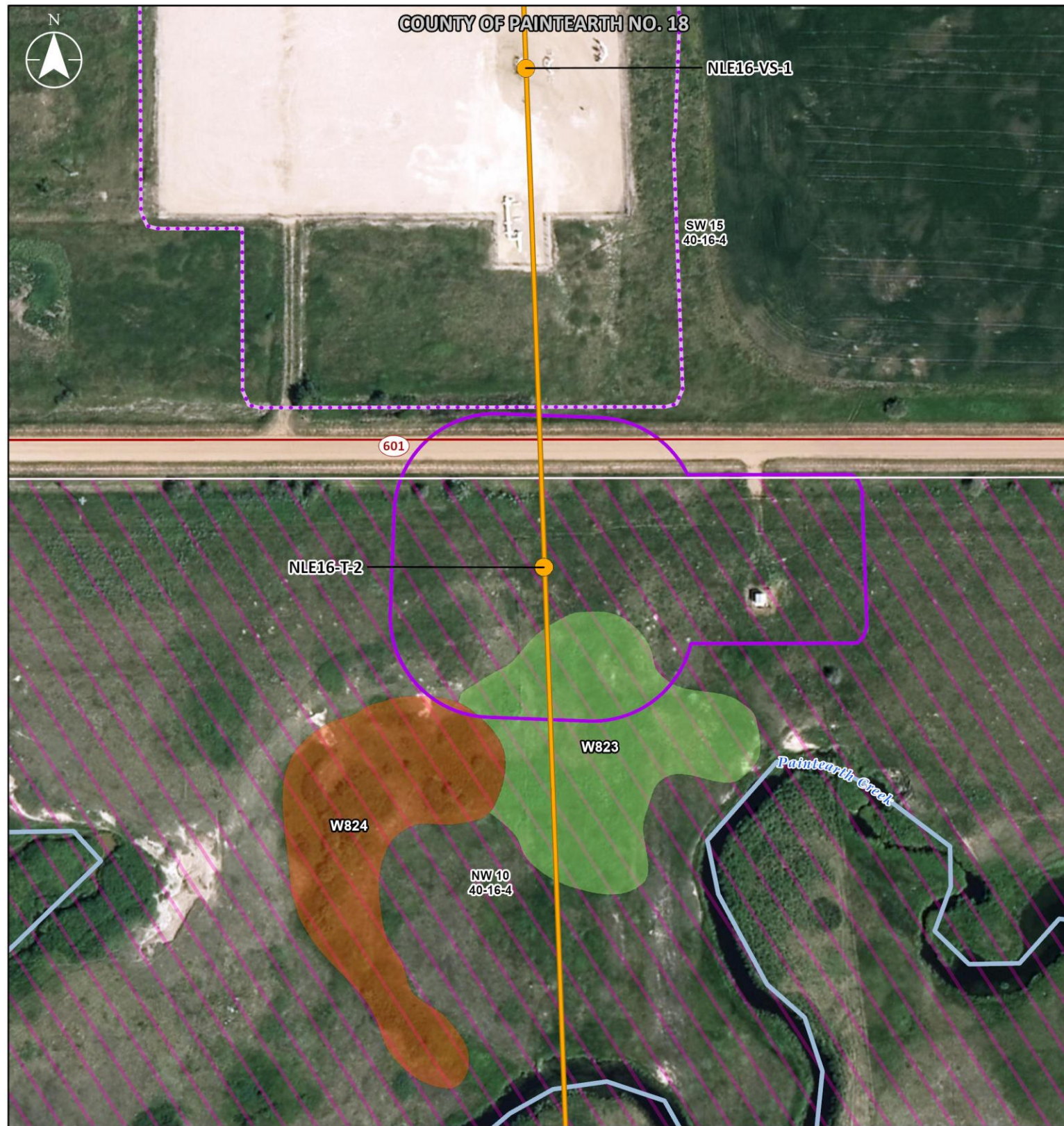
The entire map extent is within Burrowing Owl Range, Sensitive Raptor Range, Sharp-tailed Grouse Range.



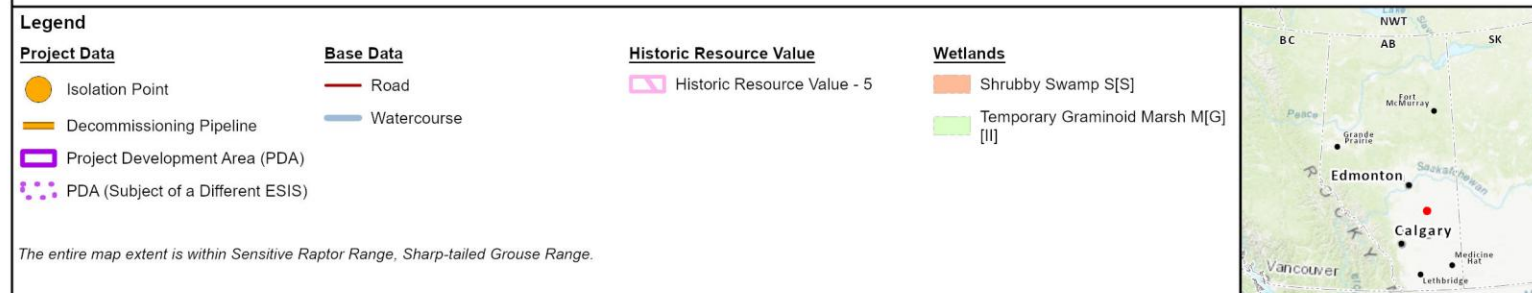
|   |   |   |
|---|---|---|
| <b>PROGRAM COMPONENT</b>                              | North Lateral Extension Stage I Brooks  |   |
| <b>PROJECT DEVELOPMENT AREA</b>                       | NOR16-VS-1  |   |
| <b>PLANNED ACTIVITIES</b>                             | Isolate NGTL GP line; decommission in place.  |   |
| <b>LEGAL LAND LOCATION</b>                            | NE 08-032-14 W4M  |   |
| <b>LAND OWNERSHIP</b>                                 | Freehold.   |   |
| <b>LAND USE</b>                                       | White Area; land use within the PDA is: grassland, industrial and wetland.  |   |
| <b>RESOURCES AND CONSTRUCTION MITIGATION MEASURES</b> | <b>SOILS DESCRIPTION</b>  | <ul style="list-style-type: none"> <li>60% Orthic Dark Brown Chernozem (Hughenden), 20% Solonetzic Dark Brown Chernozem (Flagstaff), and 20% Orthic Gleysol (Throne) developed over moderately fine till and medium glaciolacustrine materials. Well to very poorly drained.</li> <li>Considerations: stripping limitations (not obvious colour change from topsoil to subsoil, wetness, very thin topsoil), moderate water erosion risk on slopes &gt;9%, saline/sodic lower subsoils, and moderate to high compaction and rutting risk.</li> </ul>  |
|   | <b>SOIL HANDLING / SOIL SALVAGE DEPTH AND CRITERIA</b>  | <ul style="list-style-type: none"> <li>See Environmental Notes for mitigation related to soil handling / soil salvage depth and criteria.</li> </ul>  |
|   | <b>WATERCOURSES</b>   | <ul style="list-style-type: none"> <li>No watercourses within or intersecting the PDA.</li> <li>No watercourses within 100 m of the PDA.</li> <li>See Environmental Notes for mitigation related to watercourses.</li> </ul>  |
|   | <b>FISHERIES RESOURCES</b>  | <ul style="list-style-type: none"> <li>No fish-bearing watercourses within or intersecting the PDA.</li> <li>No fish-bearing watercourses within 100 m of the PDA.</li> <li>See Environmental Notes for mitigation related to watercourses.</li> </ul>  |
|   | <b>VEGETATION</b>   | <ul style="list-style-type: none"> <li>No rare vegetation concerns.</li> <li>See Environmental Notes for mitigation related to vegetation and weeds.</li> </ul>   |
|   | <b>WETLANDS</b>   | <ul style="list-style-type: none"> <li>One Shrubby Swamp S[S] (W811) and two <del>three</del> Temporary Graminoid Marshes M[G][II] (W812, W813 and W991-13) intersect PDA. COP notification is required for the marshes.</li> <li>One <del>Three</del> Temporary Graminoid Marshes M[G][II] (W814, W990 and W992) and two Seasonal Graminoid Marshes M[G][III] (W989 and W993) identified within 30 m of PDA. COP notification is required if wetland is temporarily disturbed.</li> <li>See Environmental Notes for mitigation related to wetlands.</li> </ul>   |
|   | <b>WILDLIFE</b>   | <ul style="list-style-type: none"> <li>See Environmental Notes for mitigation measured related to the following:               <ul style="list-style-type: none"> <li>Burrowing Owl Range (nesting period for the PDA is April 1 to August 15).</li> <li>Sharp-tailed Grouse Range (sensitive lekking period for the PDA is March 15 to June 15).</li> <li>Sensitive Raptor Range (for ferruginous hawk, golden-eagle and prairie falcon [sensitive raptor nesting period for the PDA is March 15 to July 15]).</li> <li>Migratory bird nesting period for the PDA is April 26 to August 14.</li> </ul> </li> </ul> |
|   | <b>HISTORICAL RESOURCES</b>   | <ul style="list-style-type: none"> <li>PDA intersects lands with a Historic Resource Value (HRV) 4 for archaeological lands</li> <li>HR Application will be submitted to Alberta Culture for HRA Approval. Any conditions of approval issued by Alberta Culture will be implemented by NGTL-GP.</li> <li>See Environmental Notes for mitigation related to historical resources.</li> </ul>   |
|   | <b>TRADITIONAL LAND USE</b>   | <ul style="list-style-type: none"> <li>No known TLU sites within the PDA.</li> <li>See Environmental Notes for mitigation related to TLU.</li> </ul>  |
|   | <b>SITE CONTAMINATION CONSIDERATIONS</b>  | <ul style="list-style-type: none"> <li>See Environmental Notes for mitigation related to site contamination considerations.</li> </ul>  |
| <b>ACCESS</b>   | <ul style="list-style-type: none"> <li>Restrict all Project activities to the approved Project footprint. All Project traffic will adhere to safety and road closure regulations.</li> </ul>  |   |
| <b>RECLAMATION</b>                                    | <ul style="list-style-type: none"> <li>Topsoil or fill material imported must be clean, free of listed weeds, match surrounding soil texture and be approved in accordance with Company requirements prior to use.</li> <li>See Environmental Notes for mitigation related to reclamation.</li> </ul> |   |
| <b>OTHER</b>  | <ul style="list-style-type: none"> <li>None.</li> </ul>   |   |

NOTES:  
Refer to the Environmental Protection Plan for a complete understanding of the mitigation requirements for the Project.

|   |                  |                           |                      |                                  |  |
|---|------------------|---------------------------|----------------------|----------------------------------|--|
| SHEET REVISION<br>Rev 1   | INTERNAL ID<br>0 | PROJECT<br>10TMAEP Forest | DATUM<br>NAD 83      | PREPARED BY<br><b>Jacobs</b>     | <b>ENVIRONMENTAL SITE INFORMATION SHEET</b><br><b>2025 DECOMMISSIONING PROGRAM</b><br>North Lateral Extension Stage I Brooks |
| <small>Project Data: TransCanada Pipelines Ltd. Jacobs 2025; Transportation: Atlat 2019; Alberta Municipal Boundaries: ABALIS 2021; Hydrology: IHS 2011; NRCan 2009; Wetlands: Jacobs 2025; Historic Resources: Alberta Culture and Tourism 2014; Vegetation: Alberta Environment and Parks 2022; Wildlife Sensitivity: Alberta Environment and Protected Areas 2024.</small> |                  |                           | DATE<br>January 2026 | PREPARED FOR<br><b>TC Energy</b> |  |
|   |                  |                           |                      |                                  |  |



AERIAL PHOTOGRAPHY

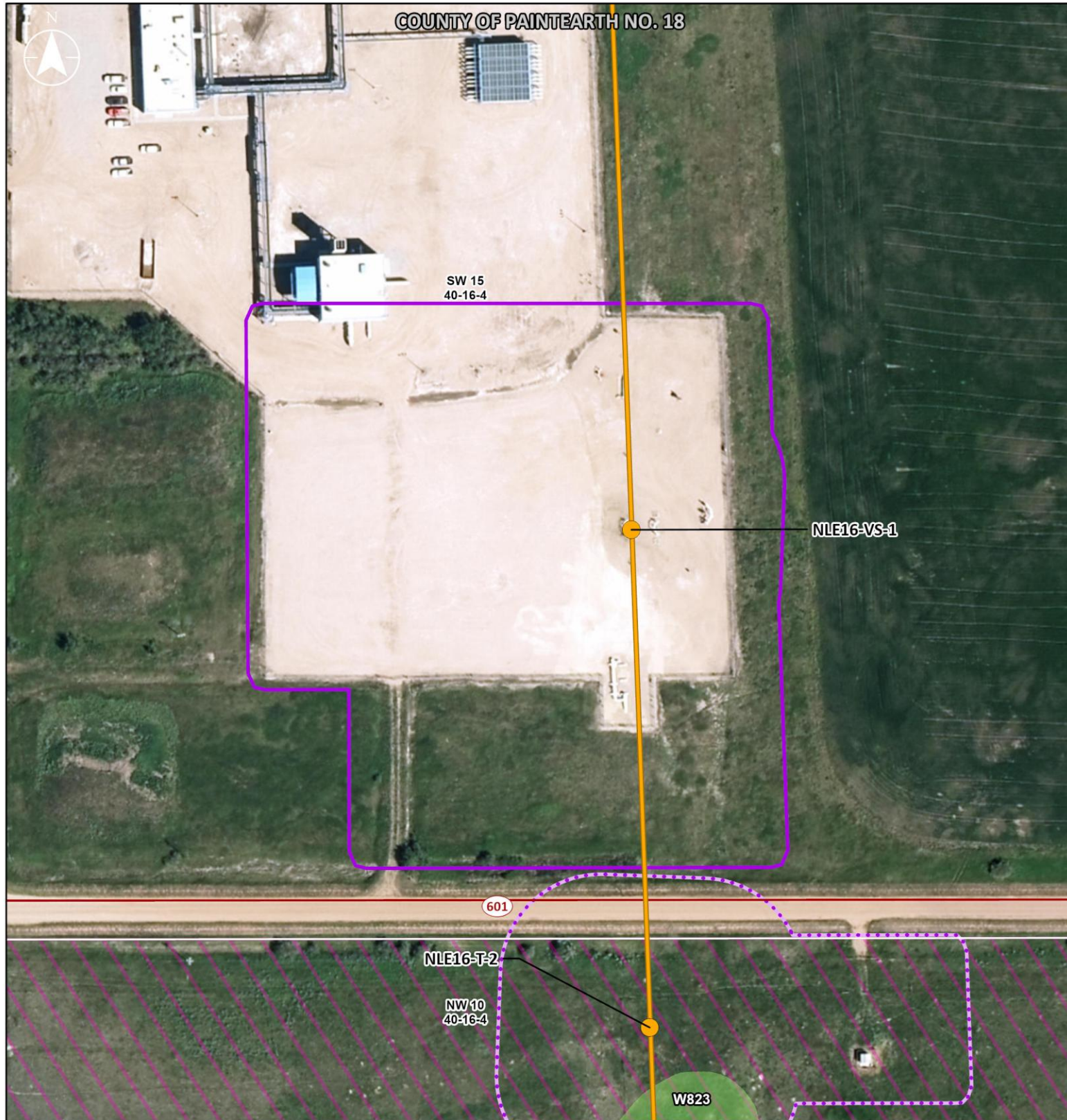


|   |  |  |
|---|--|--|
| <b>PROGRAM COMPONENT</b>                              | North Lateral Extension Stage I Vegreville   |  |
| <b>PROJECT DEVELOPMENT AREA</b>                       | NLE16-T-2  |  |
| <b>PLANNED ACTIVITIES</b>                             | Isolate NGTL GP line; decommission in place.   |  |
| <b>LEGAL LAND LOCATION</b>                            | NW 10-040-16 W4M; SW 15-040-16 W4M   |  |
| <b>LAND OWNERSHIP</b>                                 | Freehold.  |  |
| <b>LAND USE</b>                                       | White Area; land use within the PDA is: grassland, industrial, tame pasture and wetland. |  |
| <b>RESOURCES AND CONSTRUCTION MITIGATION MEASURES</b> | <b>SOILS DESCRIPTION</b>   | <ul style="list-style-type: none"> <li>The PDA is located on the boundary of two AGRASID soil polygons:</li> <li>80% Dark Brown Solodized Solonetz (Sullivan Lake, Halkirk) and Orthic Humic Gleysol (Misc. Gleysol) developed over moderately fine till and undifferentiated materials. Well to poorly drained.</li> <li>80% Orthic Regosol (Misc. Undiff Mineral) and 20% Orthic Humic Gleysol (Misc. Gleysol) developed over undifferentiated materials. Well to poorly drained.</li> <li>Considerations: low to high wind erosion risk, moderate to high water erosion risk on slopes &gt;5%, saline/sodic lower subsoils, Solonetzic B horizon, face instability, and low to high compaction and rutting risk.</li> </ul> |
|   | <b>SOIL HANDLING / SOIL SALVAGE DEPTH AND CRITERIA</b>                                   | <ul style="list-style-type: none"> <li>See Environmental Notes for mitigation related to soil handling / soil salvage depth and criteria.</li> </ul>   |
|   | <b>WATERCOURSES</b>  | <ul style="list-style-type: none"> <li>No watercourses within or intersecting the PDA.</li> <li>PDA is within 40-35 m of Paintearth Creek (1290).</li> <li>See Environmental Notes for mitigation related to watercourses.</li> </ul>  |
|   | <b>FISHERIES RESOURCES</b>   | <ul style="list-style-type: none"> <li>PDA is within 35 m of Paintearth Creek (1290). The watercourse is a Class D water body at this location with no RAP.</li> <li>Paintearth Creek has documented fish species presence.</li> <li>See Environmental Notes for mitigation related to watercourses.</li> </ul>  |
|   | <b>VEGETATION</b>  | <ul style="list-style-type: none"> <li>No rare vegetation concerns.</li> <li>See Environmental Notes for mitigation related to vegetation and weeds.</li> </ul>  |
|   | <b>WETLANDS</b>  | <ul style="list-style-type: none"> <li>One Shrubby Swamp S[S] (W824) and one Temporary Graminoid Marsh M[G][II] (W823) intersects PDA. COP notification is required for the marsh.</li> <li>See Environmental Notes for mitigation related to wetlands.</li> </ul>   |
|   | <b>WILDLIFE</b>  | <ul style="list-style-type: none"> <li>See Environmental Notes for mitigation measured related to the following: <ul style="list-style-type: none"> <li>Sharp-tailed Grouse Range (sensitive lekking period for the PDA is March 15 to June 15).</li> <li>Sensitive Raptor Range (for ferruginous hawk, golden eagle and prairie falcon [sensitive raptor nesting period for the PDA is March 15 to July 15]).</li> <li>Migratory bird nesting period for the PDA is April 26 to August 14.</li> </ul> </li> </ul>   |
|   | <b>HISTORICAL RESOURCES</b>  | <ul style="list-style-type: none"> <li>PDA intersects lands with a Historical Resources Value (HRV) 5 for palaeontological lands.</li> <li>HR Application will be submitted to Alberta Culture for HRA Approval. Any conditions of approval issued by Alberta Culture will be implemented by NGTL GP.</li> <li>See Environmental Notes for mitigation related to historical resources.</li> </ul>  |
|   | <b>TRADITIONAL LAND USE</b>  | <ul style="list-style-type: none"> <li>No known TLU sites within the PDA.</li> <li>See Environmental Notes for mitigation related to TLU.</li> </ul>   |
|   | <b>SITE CONTAMINATION CONSIDERATIONS</b>   | <ul style="list-style-type: none"> <li>See Environmental Notes for mitigation related to site contamination considerations.</li> </ul>   |
|   | <b>ACCESS</b>  | <ul style="list-style-type: none"> <li>Restrict all Project activities to the approved Project footprint. All Project traffic will adhere to safety and road closure regulations.</li> </ul>   |
|   | <b>RECLAMATION</b>   | <ul style="list-style-type: none"> <li>Topsoil or fill material imported must be clean, free of listed weeds, match surrounding soil texture and be approved in accordance with Company requirements prior to use.</li> <li>See Environmental Notes for mitigation related to reclamation.</li> </ul>  |
| <b>OTHER</b>  | <ul style="list-style-type: none"> <li>None.</li> </ul>                                  |  |

**NOTES:**

Refer to the Environmental Protection Plan for a complete understanding of the mitigation requirements for the Project.

|  |                  |                               |                             |                              |  |
|--|------------------|-------------------------------|-----------------------------|------------------------------|--|
| SHEET REVISION<br>Rev 1  | INTERNAL ID<br>0 | PROJECTION<br>10TM AEP Forest | DATUM<br>NAD 83             | PREPARED BY<br><b>Jacobs</b> | <b>ENVIRONMENTAL SITE INFORMATION SHEET</b><br><b>2025 DECOMMISSIONING PROGRAM</b><br>North Lateral Extension Stage I Vegreville |
| Project Data: TransCanada Pipelines Ltd, Jacobs 2025; Transportation: AtlasIS 2019; Alberta Municipal Boundaries: AtlasIS 2021; Hydrology: HRS 2011; NRCan 2009; Wetlands: Jacobs 2025; Historical Resources: Alberta Culture and Tourism 2024; Vegetation: Alberta Environment and Parks 2022; Wildlife Sensitivity: Alberta Environment and Protected Areas 2021; Imagery: Vector, Esri, HERE, IPOL, NOAA, USGS, EPA, AAPC, NRCan, Vector. |                  |                               |                             | DATE<br>December 2025        |  |
| 0 30 60 90<br>Metres - 1:1,500   |                  |                               | Original Page Size: 11 x 17 |                              |  |



AERIAL PHOTOGRAPHY

| Legend                              |                  | Historic Resource Value        |                                       |
|-------------------------------------|------------------|--------------------------------|---------------------------------------|
| <b>Project Data</b>                 | <b>Base Data</b> | <b>Historic Resource Value</b> | <b>Wetlands</b>                       |
| ● Isolation Point                   | — Road           | ■ Historic Resource Value - 5  | ■ Temporary Graminoid Marsh M[G] [II] |
| — Decommissioning Pipeline          |                  |                                |                                       |
| ■ Project Development Area (PDA)    |                  |                                |                                       |
| ■ PDA (Subject of a Different ESIS) |                  |                                |                                       |

The entire map extent is within Sensitive Raptor Range, Sharp-tailed Grouse Range.



|   |  |  |
|---|--|--|
| <b>PROGRAM COMPONENT</b>                              | North Lateral Extension Stage I Vegreville                                       |  |
| <b>PROJECT DEVELOPMENT AREA</b>                       | NLE16-VS-1   |  |
| <b>PLANNED ACTIVITIES</b>                             | Isolate NGTL GP line; decommission in place.                                     |  |
| <b>LEGAL LAND LOCATION</b>                            | SW 15-040-16 W4M   |  |
| <b>LAND OWNERSHIP</b>                                 | NGTL GP-owned.   |  |
| <b>LAND USE</b>                                       | White Area; land use within the PDA is: cultivated, industrial and tame pasture. |  |
| <b>RESOURCES AND CONSTRUCTION MITIGATION MEASURES</b> | <b>SOILS DESCRIPTION</b>   | <ul style="list-style-type: none"> <li>80% Dark Brown Solodized Solonetz (Sullivan Lake, Halkirk) and Orthic Humic Gleysol (Misc. Gleysol) developed over moderately fine till and undifferentiated materials. Well to poorly drained.</li> <li>Considerations: low to high wind erosion risk, moderate to high water erosion risk on slopes &gt;5%, saline/sodic lower subsoils, Solonetzic B horizon, face instability, and low to high compaction and rutting risk.</li> </ul>  |
|   | <b>SOIL HANDLING / SOIL SALVAGE DEPTH AND CRITERIA</b>                           | <ul style="list-style-type: none"> <li>See Environmental Notes for mitigation related to soil handling / soil salvage depth and criteria.</li> </ul>   |
|   | <b>WATERCOURSES</b>  | <ul style="list-style-type: none"> <li>No watercourses within or intersecting the PDA.</li> <li>No watercourses within 100 m of the PDA.</li> <li>See Environmental Notes for mitigation related to watercourses.</li> </ul>   |
|   | <b>FISHERIES RESOURCES</b>   | <ul style="list-style-type: none"> <li>No fish-bearing watercourses within or intersecting the PDA.</li> <li>No fish-bearing watercourses within 100 m of the PDA.</li> <li>See Environmental Notes for mitigation related to watercourses.</li> </ul>   |
|   | <b>VEGETATION</b>  | <ul style="list-style-type: none"> <li>No rare vegetation concerns.</li> <li>See Environmental Notes for mitigation related to vegetation and weeds.</li> </ul>  |
|   | <b>WETLANDS</b>  | <ul style="list-style-type: none"> <li>No wetlands within or intersecting the PDA.</li> <li>No wetlands identified within 30 m of the PDA.</li> <li>See Environmental Notes for mitigation related to wetlands.</li> </ul>   |
|   | <b>WILDLIFE</b>  | <ul style="list-style-type: none"> <li>See Environmental Notes for mitigation measured related to the following:               <ul style="list-style-type: none"> <li>Sharp-tailed Grouse Range (sensitive lekking period for the PDA is March 15 to June 15).</li> <li>Sensitive Raptor Range (for ferruginous hawk, golden eagle and prairie falcon [sensitive raptor nesting period for the PDA is March 15 to July 15]).</li> <li>Migratory bird nesting period for the PDA is April 26 to August 14.</li> </ul> </li> </ul>   |
|   | <b>HISTORICAL RESOURCES</b>  | <ul style="list-style-type: none"> <li>No known HRV lands are present.</li> <li><del>HRV lands intersect other PDAs on the lateral and HRA Approval is therefore required per direction from Alberta Culture for the 2025 Abandonment Program. HR Application will be submitted to Alberta Culture for HRA Approval. Any conditions of approval issued by Alberta Culture will be implemented by NGTL GP. HRA Approval not required per direction from Alberta Culture for the 2025 Decommissioning Program.</del></li> <li>See Environmental Notes for mitigation related to historical resources.</li> </ul> |
|   | <b>TRADITIONAL LAND USE</b>  | <ul style="list-style-type: none"> <li>No known TLU sites within the PDA.</li> <li>See Environmental Notes for mitigation related to TLU.</li> </ul>   |
|   | <b>SITE CONTAMINATION CONSIDERATIONS</b>   | <ul style="list-style-type: none"> <li>See Environmental Notes for mitigation related to site contamination considerations.</li> </ul>   |
|   | <b>ACCESS</b>  | <ul style="list-style-type: none"> <li>Restrict all Project activities to the approved Project footprint. All Project traffic will adhere to safety and road closure regulations.</li> </ul>   |
|   | <b>RECLAMATION</b>   | <ul style="list-style-type: none"> <li>Topsoil or fill material imported must be clean, free of listed weeds, match surrounding soil texture and be approved in accordance with Company requirements prior to use.</li> <li>See Environmental Notes for mitigation related to reclamation.</li> </ul>  |
|   | <b>OTHER</b>   | <ul style="list-style-type: none"> <li>None.</li> </ul>  |

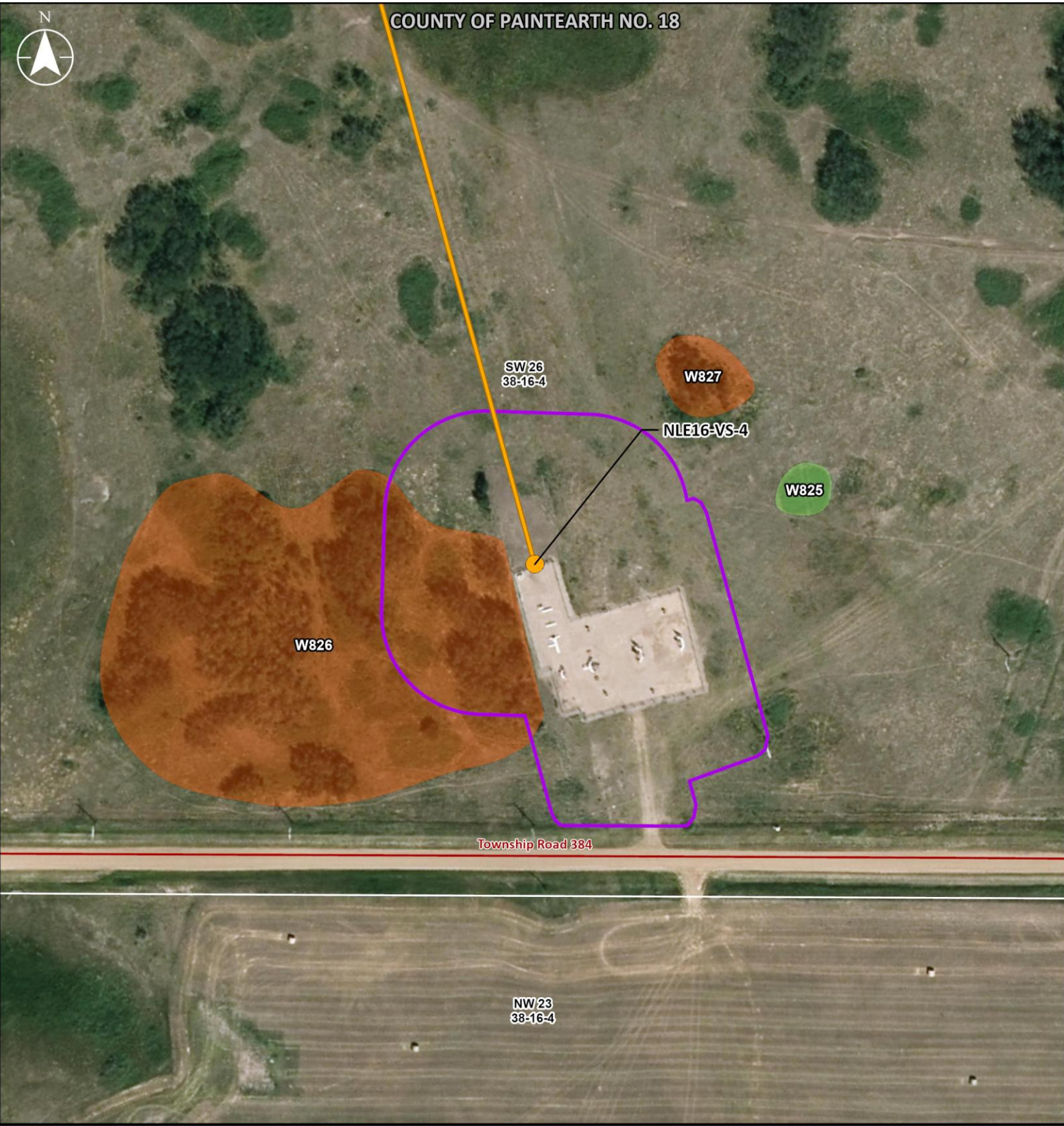
NOTES:  
Refer to the Environmental Protection Plan for a complete understanding of the mitigation requirements for the Project.

|   |                  |                               |                                  |                              |
|---|------------------|-------------------------------|----------------------------------|------------------------------|
| SHEET REVISION<br>Rev 1   | INTERNAL ID<br>0 | PROJECTION<br>10TM AEP Forest | DATUM<br>NAD 83                  | PREPARED BY<br><b>Jacobs</b> |
| Project Date: TransCanada Pipelines Ltd. Jacobs 2025; Transportation Atlas 2019; Alberta Municipal Boundaries: Atlas 2021; Hydrology: HRS 2014; NRCAN 2006; Wetlands: Jacobs 2025; History: Resources: Alberta Culture and Tourism 2014; Vegetation: Alberta Environment and Parks 2022; Wildlife Sensitivity: Alberta Environment and Protected Areas 2014 |                  | DATE<br>December 2025         | PREPARED FOR<br><b>TC Energy</b> |                              |
| 0 30 60 90<br>Metres - 1:1,500  |                  | Original Page Size: 11 x 17   |                                  |                              |

**ENVIRONMENTAL SITE INFORMATION SHEET**

**2025 DECOMMISSIONING PROGRAM**

North Lateral Extension Stage I Vegreville



AERIAL PHOTOGRAPHY

- Legend**
- |                                  |                  |
|----------------------------------|------------------|
| <b>Project Data</b>              | <b>Base Data</b> |
| ● Isolation Point                | — Road           |
| — Decommissioning Pipeline       |                  |
| ▭ Project Development Area (PDA) |                  |

- Wetlands**
- ▭ Shrubby Swamp S[S]
  - ▭ Temporary Graminoid Marsh M[G][II]

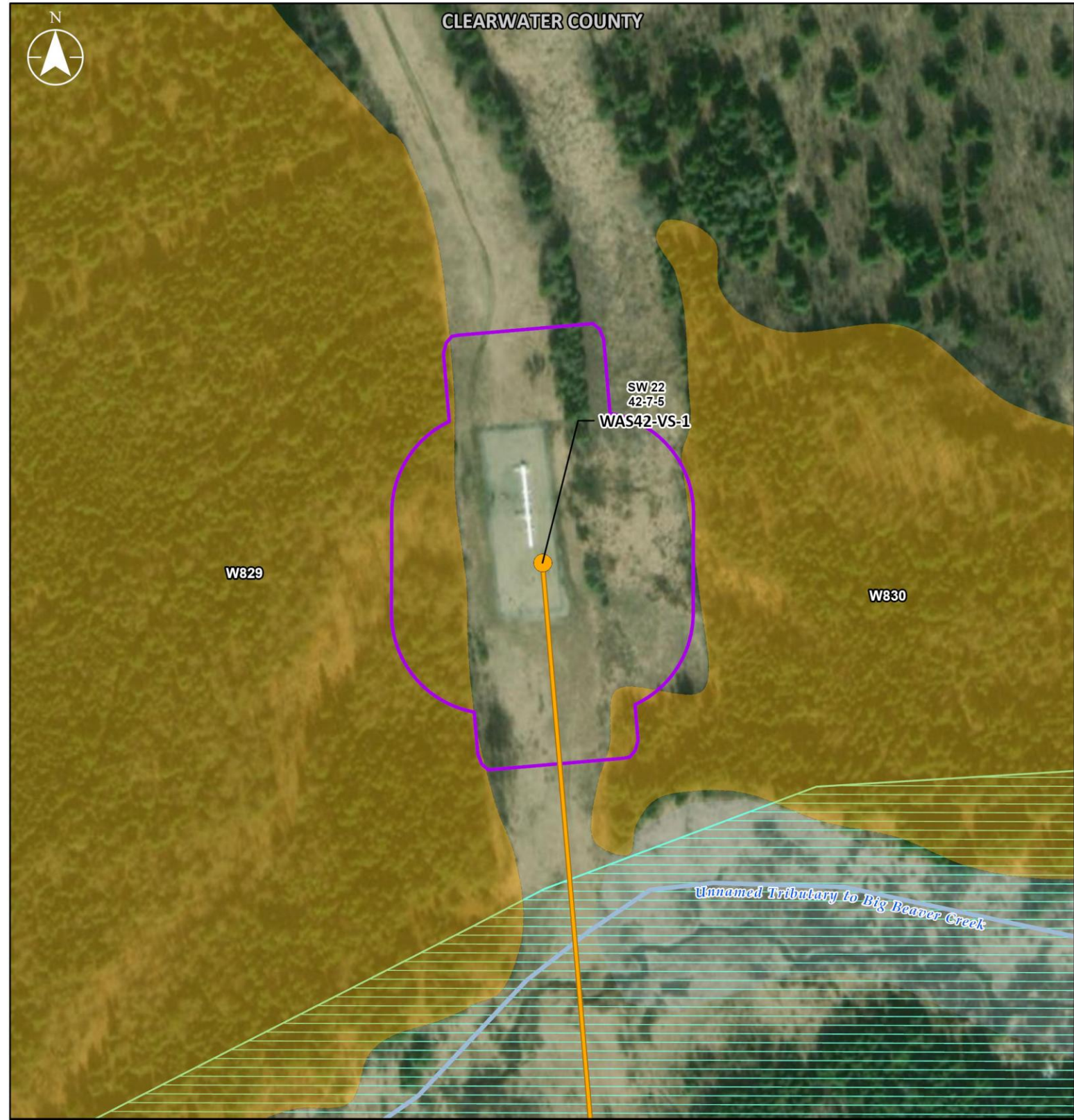


The entire map extent is within Sensitive Raptor Range, Sharp-tailed Grouse Range.

|   |  |   |
|---|--|---|
| <b>PROGRAM COMPONENT</b>                              | North Lateral Extension Stage I Vegreville                                 |   |
| <b>PROJECT DEVELOPMENT AREA</b>                       | NLE16-VS-4   |   |
| <b>PLANNED ACTIVITIES</b>                             | Isolate NGTL GP line; decommission in place.                               |   |
| <b>LEGAL LAND LOCATION</b>                            | SW 26-038-16 W4M   |   |
| <b>LAND OWNERSHIP</b>                                 | Freehold.  |   |
| <b>LAND USE</b>                                       | White Area; land use within the PDA is: grassland, industrial and wetland. |   |
| <b>RESOURCES AND CONSTRUCTION MITIGATION MEASURES</b> | <b>SOILS DESCRIPTION</b>   | <ul style="list-style-type: none"> <li>50% Dark Brown Solod (Brownfield) and 50% Dark Brown Solodized Solonetz (Halkirk) developed over moderately fine till. Well drained.</li> <li>40% Dark Brown Solod (Brownfield) and 40% Dark Brown Solodized Solonetz (Halkirk), and 10% Orthic Humic Gleysol (Misc. Gleysol) developed over moderately fine till and undifferentiated materials. Well to poorly drained.</li> <li>Considerations: stripping limitations (not obvious colour change from topsoil to subsoil), moderate to high water erosion risk on slopes &gt;5%, saline/sodic lower subsoils, Solonetzic B horizon, and low to moderate compaction and rutting risk.</li> </ul> |
|   | <b>SOIL HANDLING / SOIL SALVAGE DEPTH AND CRITERIA</b>                     | <ul style="list-style-type: none"> <li>See Environmental Notes for mitigation related to soil handling / soil salvage depth and criteria.</li> </ul>  |
|   | <b>WATERCOURSES</b>  | <ul style="list-style-type: none"> <li>No watercourses within or intersecting the PDA.</li> <li>No watercourses within 100 m of the PDA.</li> <li>See Environmental Notes for mitigation related to watercourses.</li> </ul>  |
|   | <b>FISHERIES RESOURCES</b>   | <ul style="list-style-type: none"> <li>No fish-bearing watercourses within or intersecting the PDA.</li> <li>No fish-bearing watercourses within 100 m of the PDA.</li> <li>See Environmental Notes for mitigation related to watercourses.</li> </ul>  |
|   | <b>VEGETATION</b>  | <ul style="list-style-type: none"> <li>No rare vegetation concerns.</li> <li>See Environmental Notes for mitigation related to vegetation and weeds.</li> </ul>   |
|   | <b>WETLANDS</b>  | <ul style="list-style-type: none"> <li>One Shrubby Swamp S[S] (W826) intersects the PDA. COP notification is not required.</li> <li>One Shrubby Swamp S[S] (W827) and one Temporary Graminoid Marsh M[G][II] (W825) identified within 30 m of the PDA. COP notification is required if the marsh is temporarily disturbed.</li> <li>See Environmental Notes for mitigation related to wetlands</li> </ul>   |
|   | <b>WILDLIFE</b>  | <ul style="list-style-type: none"> <li>See Environmental Notes for mitigation measures related to the following:                             <ul style="list-style-type: none"> <li>Sharp-tailed Grouse Range (sensitive lekking period for the PDA is March 15 to June 15).</li> <li>Sensitive Raptor Range (for prairie falcon [sensitive raptor nesting period for the PDA is March 15 to July 15]).</li> <li>Migratory bird nesting period for the PDA is April 26 to August 14.</li> </ul> </li> </ul>   |
|   | <b>HISTORICAL RESOURCES</b>  | <ul style="list-style-type: none"> <li>No known HRV lands are present.</li> <li>HRV lands intersect other PDAs on the lateral and HRA Approval is therefore required per direction from Alberta Culture for the 2025 Abandonment Program. HR Application will be submitted to Alberta Culture for HRA Approval. Any conditions of approval issued by Alberta Culture will be implemented by NGTL GP.</li> <li>See Environmental Notes for mitigation related to historical resources.</li> </ul>  |
|   | <b>TRADITIONAL LAND USE</b>  | <ul style="list-style-type: none"> <li>No known TLU sites within the PDA.</li> <li>See Environmental Notes for mitigation related to TLU.</li> </ul>  |
|   | <b>SITE CONTAMINATION CONSIDERATIONS</b>                                   | <ul style="list-style-type: none"> <li>See Environmental Notes for mitigation related to site contamination considerations.</li> </ul>  |
|   | <b>ACCESS</b>  | <ul style="list-style-type: none"> <li>Restrict all Project activities to the approved Project footprint. All Project traffic will adhere to safety and road closure regulations.</li> </ul>  |
|   | <b>RECLAMATION</b>   | <ul style="list-style-type: none"> <li>Topsoil or fill material imported must be clean, free of listed weeds, match surrounding soil texture and be approved in accordance with Company requirements prior to use.</li> <li>See Environmental Notes for mitigation related to reclamation.</li> </ul>   |
|   | <b>OTHER</b>   | <ul style="list-style-type: none"> <li>None.</li> </ul>   |

**NOTES:**  
Refer to the Environmental Protection Plan for a complete understanding of the mitigation requirements for the Project.

|   |                 |                               |                 |                              |  |
|---|-----------------|-------------------------------|-----------------|------------------------------|--|
| SHEET REVISION<br>Rev 1   | ITERIAL ID<br>0 | PROJECTION<br>10TM AEP Forest | SATUM<br>NAD 83 | PREPARED BY<br><b>Jacobs</b> | <b>ENVIRONMENTAL SITE INFORMATION SHEET</b><br><b>2025 DECOMMISSIONING PROGRAM</b><br>North Lateral Extension Stage I Vegreville |
| <small>Project Data: TransCanada Pipelines Ltd. Jacobs 2025; Transportation: Atlas 2019; Alberta Municipal Boundaries: Atlas 2021; Hydrology: HES 2011; NRCan 2009; Wetlands: Jacobs 2025; Wetlands Resources: Alberta Culture and Tourism 2014; Vegetation: Alberta Environment and Parks 2022; Wildlife Sensitivity: Alberta Environment and Protected Areas 2024; Imagery: Verity, Esri, HERE, Garmin, FAO, NOAA, EPA, AAF, NRCan.</small> |                 |                               |                 | DATE<br>December 2025        |  |
|   |                 |                               |                 |                              |  |



AERIAL PHOTOGRAPHY

**Legend**

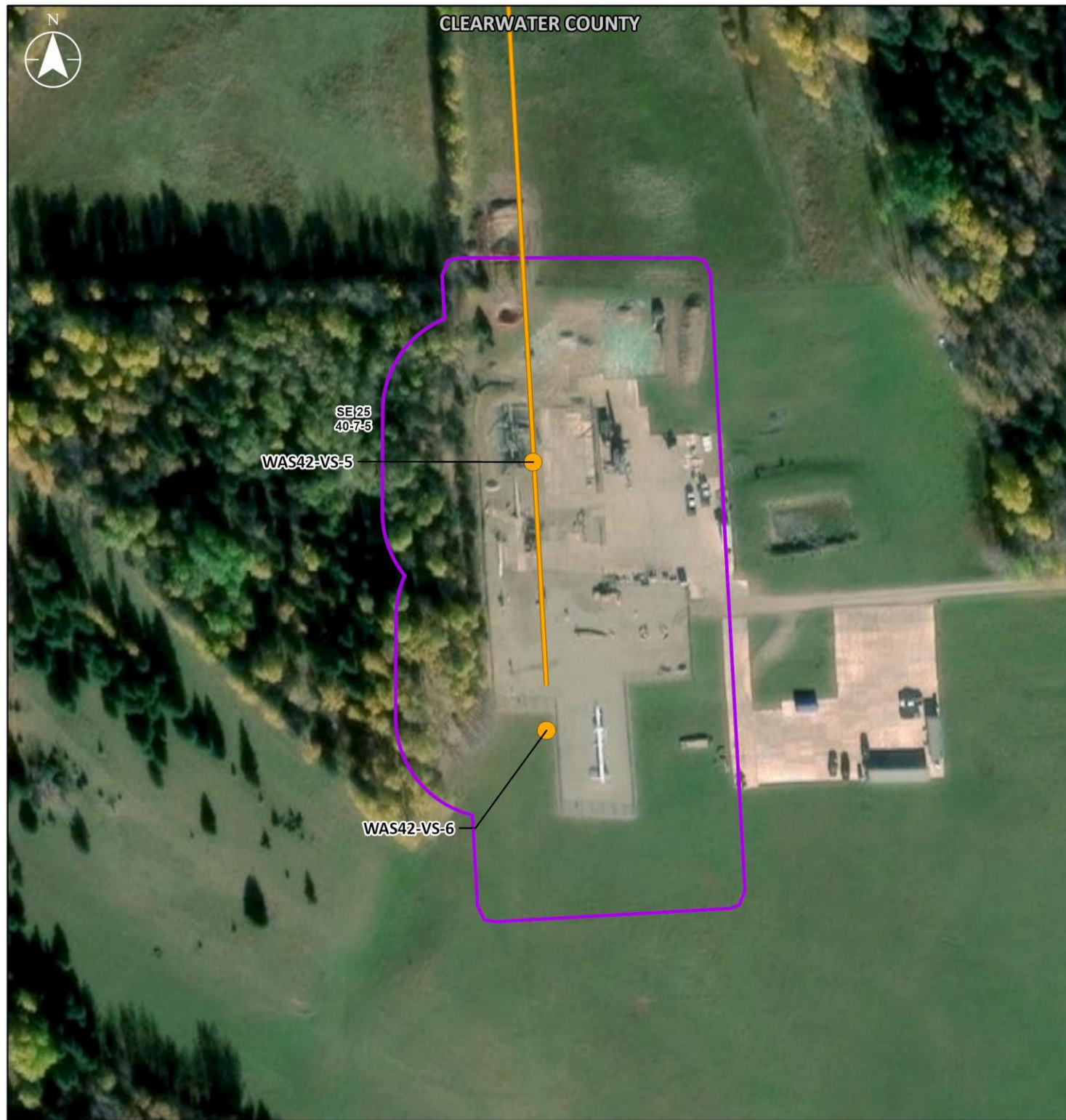
|                                  |                  |                                      |                                |
|----------------------------------|------------------|--------------------------------------|--------------------------------|
| <b>Project Data</b>              | <b>Base Data</b> | <b>Wildlife</b>                      | <b>Wetlands</b>                |
| ● Isolation Point                | — Watercourse    | □ Key Wildlife and Biodiversity Zone | □ Wooded Mixedwood Swamp S[Wm] |
| — Decommissioning Pipeline       |                  |                                      |                                |
| □ Project Development Area (PDA) |                  |                                      |                                |

The entire map extent is within Grizzly Bear Support Zone.

|   |   |   |
|---|---|---|
| <b>PROGRAM COMPONENT</b>                              | WAS ML Loop – Westeros Section  |   |
| <b>PROJECT DEVELOPMENT AREA</b>                       | WAS42-VS-1  |   |
| <b>PLANNED ACTIVITIES</b>                             | Isolate NGTL GP line; decommission in place.  |   |
| <b>LEGAL LAND LOCATION</b>                            | SW 22-042-07 W5M  |   |
| <b>LAND OWNERSHIP</b>                                 | Crown.  |   |
| <b>LAND USE</b>                                       | Green Area; land use within the PDA is: existing ROW, forested, industrial and wetland. |   |
| <b>RESOURCES AND CONSTRUCTION MITIGATION MEASURES</b> | <b>SOILS DESCRIPTION</b>  | <ul style="list-style-type: none"> <li>Existing soil conditions for this PDA cannot be identified from publicly available data.</li> <li>Regional soils associated with the Lower Boreal Highlands Natural Subregion primarily consist of Orthic Gray Luvisols and gleyed subgroups. Regosols can be found on steep erosional slopes. Peaty Gleysols, Mesisols and Organic Cryosols are typically associated with wetland complexes in the region.</li> </ul> |
|   | <b>SOIL HANDLING / SOIL SALVAGE DEPTH AND CRITERIA</b>                                  | <ul style="list-style-type: none"> <li>See Environmental Notes for mitigation related to soil handling / soil salvage depth and criteria.</li> </ul>  |
|   | <b>WATERCOURSES</b>   | <ul style="list-style-type: none"> <li>No watercourses within or intersecting the PDA.</li> <li>PDA is within 40 m of an unnamed tributary to Big Beaver Creek (52032).</li> <li>See Environmental Notes for mitigation related to watercourses.</li> </ul>   |
|   | <b>FISHERIES RESOURCES</b>  | <ul style="list-style-type: none"> <li>PDA is within 55-40 m of an unnamed tributary to Big Beaver Creek (52032). The watercourse is a Class C water body with a RAP of September 16 to June 30. Fish bearing status is unknown.</li> <li>See Environmental Notes for mitigation related to watercourses.</li> </ul>  |
|   | <b>VEGETATION</b>   | <ul style="list-style-type: none"> <li>No rare vegetation concerns.</li> <li>See Environmental Notes for mitigation related to vegetation and weeds.</li> </ul>   |
|   | <b>WETLANDS</b>   | <ul style="list-style-type: none"> <li>Two Wooded Mixedwood Swamps S[Wm] (W829 and W830) intersect PDA. COP notification is not required.</li> <li>See Environmental Notes for mitigation related to wetlands.</li> </ul>   |
|   | <b>WILDLIFE</b>   | <ul style="list-style-type: none"> <li>See Environmental Notes for mitigation measured related to the following: <ul style="list-style-type: none"> <li>Grizzly Bear Support Zone (denning period for the PDA is October 1 to April 30).</li> <li>Migratory bird nesting period for the PDA is April 26 to August 14.</li> </ul> </li> </ul>  |
|   | <b>HISTORICAL RESOURCES</b>   | <ul style="list-style-type: none"> <li>No known HRV lands are present.</li> <li>HRA Approval not required per direction from Alberta Culture for the 2025 Decommissioning Program.</li> <li>See Environmental Notes for mitigation related to historical resources.</li> </ul>  |
|   | <b>TRADITIONAL LAND USE</b>   | <ul style="list-style-type: none"> <li>No known TLU sites within the PDA.</li> <li>See Environmental Notes for mitigation related to TLU.</li> </ul>  |
|   | <b>SITE CONTAMINATION CONSIDERATIONS</b>  | <ul style="list-style-type: none"> <li>See Environmental Notes for mitigation related to site contamination considerations.</li> </ul>  |
|   | <b>ACCESS</b>   | <ul style="list-style-type: none"> <li>Restrict all Project activities to the approved Project footprint. All Project traffic will adhere to safety and road closure regulations.</li> </ul>  |
|   | <b>RECLAMATION</b>  | <ul style="list-style-type: none"> <li>Topsoil or fill material imported must be clean, free of listed weeds, match surrounding soil texture and be approved in accordance with Company requirements prior to use.</li> <li>See Environmental Notes for mitigation related to reclamation.</li> </ul>   |
|   | <b>OTHER</b>  | <ul style="list-style-type: none"> <li>None.</li> </ul>   |

**NOTES:**  
Refer to the Environmental Protection Plan for a complete understanding of the mitigation requirements for the Project.

|  |                  |                               |                 |                                  |  |
|--|------------------|-------------------------------|-----------------|----------------------------------|--|
| SHEET REVISION<br>Rev 1  | INTERNAL ID<br>0 | PROJECTION<br>10TM AEP Forest | DATUM<br>NAD 83 | PREPARED BY<br><b>Jacobs</b>     | <b>ENVIRONMENTAL SITE INFORMATION SHEET</b><br><b>2025 DECOMMISSIONING PROGRAM</b><br>WAS ML Loop – Westeros Section |
| <small>Project Data: TransCanada Pipelines Ltd. Jacobs 2025; Transportation: AltaIS 2019; Alberta Municipal Boundaries: AltaIS 2021; Hydrology: RNS 2011; NRCan 2009; Wetlands: Jacobs 2025; Historic Resources: Alberta Culture and Tourism 2024; Vegetation: Alberta Environment and Parks 2022; Wildlife Sensitivity: Alberta Environment and Protected Areas 2024<br/> Imagery: Esri, HERE, Garmin, FAO, NOAA, USGS, EPA, AAFIC, NRCan, Vector</small> |                  |                               |                 | DATE<br>December 2025            |  |
|  |                  |                               |                 | PREPARED FOR<br><b>TC Energy</b> |  |



SE25  
40-7-5  
WAS42-VS-5

WAS42-VS-6

AERIAL PHOTOGRAPHY

**Legend**

**Project Data**

- Isolation Point
- Decommissioning Pipeline
- Project Development Area (PDA)

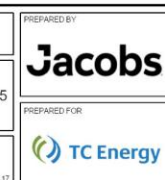


|   |  |  |
|---|--|--|
| <b>PROGRAM COMPONENT</b>                              | WAS ML Loop – Westerose Section  |  |
| <b>PROJECT DEVELOPMENT AREA</b>                       | WAS42-VS-5; WAS42-VS-6   |  |
| <b>PLANNED ACTIVITIES</b>                             | Isolate NGTL GP line; decommission in place.                                   |  |
| <b>LEGAL LAND LOCATION</b>                            | SE 25-040-07 W5M   |  |
| <b>LAND OWNERSHIP</b>                                 | NGTL GP-owned and freehold.  |  |
| <b>LAND USE</b>                                       | White Area; land use within the PDA is: forested, industrial and tame pasture. |  |
| <b>RESOURCES AND CONSTRUCTION MITIGATION MEASURES</b> | <b>SOILS DESCRIPTION</b>   | <ul style="list-style-type: none"> <li>60% Orthic Gray Luvisol (Hubalta), 20% Brunisolic Gray Luvisol (Sunchild), and 20% Orthic Humic Gleysol (Codner), developed over medium glaciolacustrine/till, moderately fine till, and moderately fine fluvial or lacustrine materials. Well to very poorly drained.</li> <li>Considerations: stripping limitations (not obvious colour change from topsoil to subsoil, wetness), moderate to high water erosion risk, and moderate to high compaction and rutting risk.</li> </ul> |
|   | <b>SOIL HANDLING / SOIL SALVAGE DEPTH AND CRITERIA</b>                         | <ul style="list-style-type: none"> <li>See Environmental Notes for mitigation related to soil handling / soil salvage depth and criteria.</li> </ul>   |
|   | <b>WATERCOURSES</b>  | <ul style="list-style-type: none"> <li>No watercourses within or intersecting the PDA.</li> <li>No watercourses within 100 m of the PDA.</li> <li>See Environmental Notes for mitigation related to watercourses.</li> </ul>   |
|   | <b>FISHERIES RESOURCES</b>   | <ul style="list-style-type: none"> <li>No fish-bearing watercourses within or intersecting the PDA.</li> <li>No fish-bearing watercourses within 100 m of the PDA.</li> <li>See Environmental Notes for mitigation related to watercourses.</li> </ul>   |
|   | <b>VEGETATION</b>  | <ul style="list-style-type: none"> <li>No rare vegetation concerns.</li> <li>See Environmental Notes for mitigation related to vegetation and weeds.</li> </ul>  |
|   | <b>WETLANDS</b>  | <ul style="list-style-type: none"> <li>No wetlands within or intersecting the PDA.</li> <li>No wetlands identified within 30 m of the PDA.</li> <li>See Environmental Notes for mitigation related to wetlands.</li> </ul>   |
|   | <b>WILDLIFE</b>  | <ul style="list-style-type: none"> <li>See Environmental Notes for mitigation measured related to the following: <ul style="list-style-type: none"> <li>Migratory bird nesting period for the PDA is May 2 to August 10.</li> </ul> </li> </ul>  |
|   | <b>HISTORICAL RESOURCES</b>  | <ul style="list-style-type: none"> <li>No known HRV lands are present.</li> <li>HRA Approval not required per direction from Alberta Culture for the 2025 Decommissioning Program.</li> <li>See Environmental Notes for mitigation related to historical resources.</li> </ul>   |
|   | <b>TRADITIONAL LAND USE</b>  | <ul style="list-style-type: none"> <li>No known TLU sites within the PDA.</li> <li>See Environmental Notes for mitigation related to TLU.</li> </ul>   |
|   | <b>SITE CONTAMINATION CONSIDERATIONS</b>                                       | <ul style="list-style-type: none"> <li>See Environmental Notes for mitigation related to site contamination considerations.</li> </ul>   |
|   | <b>ACCESS</b>  | <ul style="list-style-type: none"> <li>Restrict all Project activities to the approved Project footprint. All Project traffic will adhere to safety and road closure regulations.</li> </ul>   |
|   | <b>RECLAMATION</b>   | <ul style="list-style-type: none"> <li>Topsoil or fill material imported must be clean, free of listed weeds, match surrounding soil texture and be approved in accordance with Company requirements prior to use.</li> <li>See Environmental Notes for mitigation related to reclamation.</li> </ul>  |
| <b>OTHER</b>  | <ul style="list-style-type: none"> <li>None.</li> </ul>                        |  |

**NOTES:**

Refer to the Environmental Protection Plan for a complete understanding of the mitigation requirements for the Project.

|   |                  |                               |                            |
|---|------------------|-------------------------------|----------------------------|
| SHEET REVISION:<br>Rev 1  | ITERIAL ID:<br>0 | PROJECTION:<br>10TMAEP Forest | DATUM:<br>NAD 83           |
| <small>Project Data: TransCanada Pipelines Ltd. Jacobs 2025; Transportation Atlas 2019; Alberta Municipal Boundaries Atlas 2021; Hydrology: HRS 2011; NRCan 2009; Wetlands: Jacobs 2025; Historic Resources: Alberta Culture and Tourism 2014; Vegetation: Alberta Environment and Parks 2022; Wildlife Sensitivity: Alberta Environment and Protected Areas 2014; Imagery: Esri; HERE; Garmin; FAO; NOAA; EPA; AAPFC; NRCan.</small> |                  | DATE:<br>December 2025        | PREPARED FOR:<br>TC Energy |
|   |                  |                               |                            |



**ENVIRONMENTAL SITE INFORMATION SHEET**  
**2025 DECOMMISSIONING PROGRAM**  
WAS ML Loop – Westerose Section

## ENVIRONMENTAL NOTES

These Environmental Site Information Sheets (ESIS) are intended to be used in conjunction with the Program-specific Environmental Protection Plan (EPP). Measures outlined in the ESIS are site-specific measures to address specific environmental features and are not a comprehensive list of all measures to be applied. Refer to the EPP for additional general measures for the Program. The following general measures are applicable to all Project Development Areas (PDAs):

### Soil Handling / Soil Salvage Depth and Criteria

- Where a gravel surface is in place, it is assumed that no topsoil is present; therefore, no soil salvage is required within the gravelled area. Strip and stockpile all yard gravel removed from the Project site except for gravel that is required for facilities left in-place.
- Where soil stripping is required:
  - Stripping depth will be determined by the Environmental Inspector(s) or designate(s) based on site-specific conditions.
  - Strip full area required for isolation and/or pipeline removal.
  - If stripped, topsoil/strippings will be stockpiled and re-used for site reclamation.
  - The strippings will be stockpiled in a designated location, in a manner that will not cause erosion or sedimentation.

### Wildlife

- Refer to Sections 2.1.1 and 2.1.2 and Table 3 of the EPP for additional mitigation measures for wildlife and wildlife habitat.
- Report the identification of unanticipated wildlife species of concern or their site-specific habitat (e.g., dens, nests) to the Environmental Inspector(s) or designate(s) and implement the Wildlife Species of Concern Discovery Contingency Plan (Appendix 1E).
- Burrowing Owl Range: Where decommissioning activities (including clearing and reclamation) are scheduled during the burrowing owl nesting period (April 1 to August 15), a burrowing owl survey will be undertaken prior to decommissioning activities in suitable habitat within 500 m of a PDA by a Wildlife Resource Specialist. If an active nest is discovered, it will be subject to site-specific mitigation measures (i.e., clearly marked protective buffer around the nest and/or non-intrusive monitoring). Consult with Alberta Environment and Protected Areas (AEPA) in the event a reduction in the species-specific buffer during the sensitive nesting period is required.
- Sensitive Raptor Range (Bald Eagle, Ferruginous Hawk, Golden Eagle, Prairie Falcon): In the event activities are scheduled during the sensitive raptor nesting period (March 15 to July 15), conduct a site visit prior to construction to determine the status of observed nests. If the nests are active/occupied by a sensitive raptor species implement a 1,000 m buffer and consult with AEPA to determine appropriate mitigation. Measures may include a modified buffer with onsite monitoring during activities.
  - If nests are active/occupied by a non-sensitive raptor species (e.g., red-tailed hawk, Swainson's hawk, great horned owls) implement a 100 m buffer and consult with a Wildlife Resource Specialist if a modified buffer is suitable with onsite monitoring during activities.
- Sharp-tailed Grouse Range: Where Decommissioning Activities (including clearing and reclamation) are scheduled during the sensitive lekking period (March 15 to June 15), a sharp-tailed grouse lek survey should occur during the appropriate survey window (March 15 to May 15) to identify active sharp-tailed grouse leks in suitable habitat within 500 m of a PDA by a Wildlife Resource Specialist. If an active lek is discovered, it will be subject to site-specific mitigation measures (i.e., clearly marked protective buffer around the lek and/or non-intrusive monitoring). Consult with AEPA in the event a reduction in the species-specific buffer during the sensitive nesting period is required.
- Sensitive Amphibian Range: If clearing and Decommissioning Activities are scheduled to occur during the active amphibian season (May 1 to September 30) within 100 m of potential breeding and foraging habitat (i.e., suitable breeding wetlands), conduct pre-construction sweeps in wetlands to confirm presence.
  - If amphibian presence is confirmed, install exclusion fencing along the edges of the Project footprint within the 100m setback distance for amphibian species of management concern, or suitable length based on site conditions as determined by the Wildlife Resource Specialist and Environmental Inspector(s) or designate, to reduce the risk of amphibians entering the work area. Where fencing is not feasible, undertake area searches daily prior to activity and relocate amphibians to suitable habitat away from the workspace (relocation sites to be determined in field).
- Sensitive Snake Habitat and Sensitive Snake Hibernacula Range: During the active period (March 15 to October 31) a wildlife sweep will be conducted prior to Decommissioning Activities. If a snake is observed, site specific measures from the Snake Protection Plan will be applied.
- Grizzly Bear Support Zone: Where Decommissioning Activities (including clearing and reclamation) are scheduled during the bear denning period (October 1 to April 30), a grizzly bear den survey will be undertaken prior to Decommissioning Activities in suitable denning habitat within 200 m of a PDA by a Wildlife Resource Specialist, preferably in October or November during suitable weather and snowfall conditions. If an active den is discovered, consult with AEPA to determine appropriate mitigation.
  - Follow Alberta BearSmart guidelines. Food waste will be collected inside vehicles and removed daily from the site to approved disposal receptacles.
- Key Wildlife and Biodiversity Zones: Schedule construction activities to occur outside the Key Wildlife and Biodiversity Zone timing restriction of January 15 to April 30. Consult with AEPA in the event construction activities cannot avoid this period.
- Caribou Range: Schedule Decommissioning Activities outside to the restricted activity period (RAP) of February 15 to July 15. Exceptions include locations access using Class V routes and activities occurring within 100 m of existing arterial all-weather roads.
- Migratory Bird Primary Nesting Period (PNP):
  - If Decommissioning Activities (including clearing and reclamation) are scheduled to commence during the raptor nesting period or migratory bird PNP, refer to the Breeding Bird and Nest Management Plan (Appendix 1E of the EPP).
  - In the event an active nest is found, or breeding behaviour is observed, it will be subject to site-specific mitigation measures (i.e., clearly marked protective buffer around the nest and/or non-intrusive monitoring) based on the Breeding Bird and Nest Management Plan (Appendix 1E of the EPP).

### Vegetation

- Report the identification of unanticipated rare plants or rare ecological communities of concern to the Environmental Inspector(s) or designate(s) and implement the Plant Species and Ecological Communities of Concern Discovery Contingency Plan (Appendix 1E of the EPP).

### **Weeds**

- Follow general weed mitigation measures outlined in Section 2.1.2 of the EPP.

### **Wetlands**

- Refer to Sections 2.1.2 and 2.2 of the EPP for mitigation measures for wetlands.
- Minimize the removal of vegetation in wetlands to the extent feasible.
- Conduct ground level cutting/mowing/mulching of wetland vegetation instead of grubbing. The method of removal of wetland vegetation is subject to approval by the Company.
- Minimize grading within wetland boundaries. TWS within the boundary of a wetland must be approved by the Environmental Inspector(s) or designate(s).
- Replace trench material as soon as feasible, and re-establish preconstruction contours within wetland boundary to facilitate cross ROW drainage.
- Maintain natural drainage to allow water to move from one side of the Project footprint and/or access road to the other.
- Natural recovery is the preferred method of reclamation in wetlands. Do not seed wetland areas unless otherwise specified by the Company.
- The Company will obtain regulatory approval prior to infilling wetlands, where required.

### **Watercourses**

- Refer to Section 2.1.2 of the EPP for mitigation measures for fish and fish habitat.
- Conduct refueling at least 100 m away from any watercourse or waterbody, when feasible. Where equipment refueling is required within 100 m of a watercourse or waterbody, employ the following measures to reduce the risk of fuel releases into water:
  - All containers, hoses, nozzles are free of leaks;
  - Store fuel, and conduct refueling, in containment trays.
  - All fuel nozzles are equipped with automatic shut offs; and
  - Always have operators stationed at both ends of the hose during fueling unless the ends are visible and readily accessible by one operator.
- Construct/install all watercourse vehicle crossings as outlined in Table 2, if applicable, and in accordance with the typical drawings (see Appendix 1D) of the EPP).

### **Historical Resources**

- If any PDAs on an Asset or Lateral intersect HRV lands, *Historical Resources Act* Approval must be received for all PDAs required to decommission that Asset or Lateral, including PDAs outside of HRV lands, prior to the start of Decommissioning Activities.
- ~~*Historical Resources Act* Approval must be received prior to start of Decommissioning Activities.~~
- If historical or palaeontological features (e.g., arrow heads, modified bone, pottery fragments, fossils), potential human remains or Traditional Land and Resource Use (TLRU) sites not previously identified are found on the Project footprint during Decommissioning Activities, implement the measures outlined in the Cultural Resource Discovery Contingency Plan (Appendix 1E of the EPP).

### **Traditional Land Use**

- If Traditional Land Use (TLU) sites not previously identified are found on the PDA during Decommissioning Activities, implement the Cultural Resource Discovery Contingency Plan (Appendix 1E of the EPP).

### **Site Contamination Considerations**

- Purge and clean the pipeline segments to be abandoned prior to isolation or other Project activities. In the event of a spill, refer to the Release Contingency Plan (Appendix 1E).
- In the event contaminated soils or other materials are encountered during Project activities, implement the Contaminated Soils Contingency Plan (Appendix 1E).

### **Reclamation**

- Natural recovery is the preferred method of reclamation in non-agricultural areas on level terrain where erosion is not expected. Where site-specific conditions warrant, seed disturbed areas with a cover crop and/or seed mix that has been approved by the responsible regulator and/or landowner.
- Use broadcast application on steep terrain, forested areas, fence lines, road ditches, watercourse banks, etc.
- Refer to Section 2.1.2 of the EPP for a complete listing of reclamation requirements.

### **Acronyms and Abbreviations on the ESIS**

|      |   |
|------|---|
| AEPA | Alberta Environment and Protected Areas |
| EPP  | Environmental Protection Plan           |
| ESIS | Environmental Site Information Sheets   |
| PDA  | Project Development Area                |
| PNP  | Primary Nesting Period                  |
| RAP  | Restricted Activity Period              |
| TLU  | Traditional Land Use                    |