



450 - 1 Street SW
Calgary, Alberta T2P 5H1

Tel: (403) 920-7425
E-mail: kenneth_pountney@tcenergy.com

June 13, 2025

Filed Electronically

Canada Energy Regulator
Suite 210, 517 Tenth Avenue SW
Calgary, Alberta T2R 0A8

Attention: Ramona Sladic, Secretary of the Commission

Dear Ramona Sladic:

**Re: NGTL GP Ltd. (NGTL GP), as general partner on behalf of
NGTL Limited Partnership
2024 Meter Stations and Laterals Abandonment Program (the Program or
2024 Abandonment Program)
Order ZO-001-2025 (Order)
Program Update No. 2
File No.: 5998803**

On February 28, 2025, the Commission of the Canada Energy Regulator issued the Order approving the 2024 Abandonment Program.¹ As engineering design review and Program planning continue to progress, NGTL GP has identified changes required to be made to the Program, as such NGTL GP is providing the following updates:

Haro 144 – Groundbed

NGTL GP has identified an ongoing requirement for the Haro 144 – groundbed (Haro 144GB), located on the Keg River Lateral in SW 14-102-03 W6M, to provide cathodic protection (CP) to NGTL GP's nearby NPS 20 Peace River Mainline (PRML 1980). As a result, the Haro 144GB components (rectifier and below-grade cabling) will remain in-place and active. Approximately 955 metres (m) of the Keg River Lateral, between the Haro 144GB and the PRML 1980, will act as a conduit and provide CP to the PRML 1980. In its Application, NGTL GP had assessed a project development area (PDA) for the Haro 144GB,² and confirms there are no changes to this PDA, and it will be used for the isolation (cut and cap) and abandonment in-place of the Keg River Lateral. NGTL GP provides as Attachment 1 a revised Environmental Site Information Sheet (ESIS) for this location, NGTL GP confirms that the changes do not result in new environmental interactions not previously assessed by the 2024 Abandonment Program and the scope is addressed by existing standard mitigation measures within the Program's Environmental Protection Plan (EPP).

Keg River North – 452 Groundbed

NGTL GP identified that the ESIS for the Keg River North – 452 groundbed, as provided in its Application,³ did not include an assessed PDA for the removal of the below-grade infrastructure

¹ Filing ID: C33601.

² Filing ID: C30050-10, PDF page 56 of 57.

³ Filing ID: C30050-10, PDF page 57 of 57.

including anodes, fuel gas connection piping, below-grade cables and anode wiring. NGTL GP has completed an environmental assessment of the updated PDA and has identified a wetland (wooded mixedwood swamp) and a watercourse (unnamed tributary to Chinchaga River) that are intersected by the PDA. Although the watercourse is located within the PDA, there is no instream work anticipated aside from the potential for temporary vehicle crossing of the watercourse for access, if required. Sections 2.1.2 and 2.2 of the EPP provide mitigation measures that will be utilized for work required within a riparian zone or watercourse. The objectives of the measures are to avoid or minimize impacts and comply with all provincial and federal regulatory requirements. NGTL GP is providing, as Attachment 2, an updated ESIS for this location.

Prosperity Receipt Meter Station Access Road

Access into NGTL GP's Prosperity Receipt Meter Station (Prosperity RMS) is via a third-party access road. NGTL GP had been approached by the third-party as they were looking to reclaim the access road as it was no longer required to gain access to their adjacent compressor station site, as it had been removed and reclaimed. As NGTL GP requires access to the Prosperity RMS site to complete its Abandonment Activities and reclamation, the third-party requested NGTL GP assume the land rights to the access road.

NGTL GP has since entered into an agreement with the freehold landowner to assume the land rights for the access road and will complete reclamation upon abandonment of the Prosperity RMS.

NGTL GP has completed an environmental assessment of the approximately 357.23 m long by 15.24 m wide access road (approximately 0.54 hectares) and concluded that the access road PDA does not result in new environmental interactions not previously assessed by the 2024 Abandonment Program, and the scope is addressed by existing standard mitigation measures within the Program's EPP. NGTL GP provides as Attachment 3, an updated ESIS and Survey Plan for the access road.

For enquiries, please contact me at (403) 920-7425 or at kenneth_pountney@tcenergy.com.

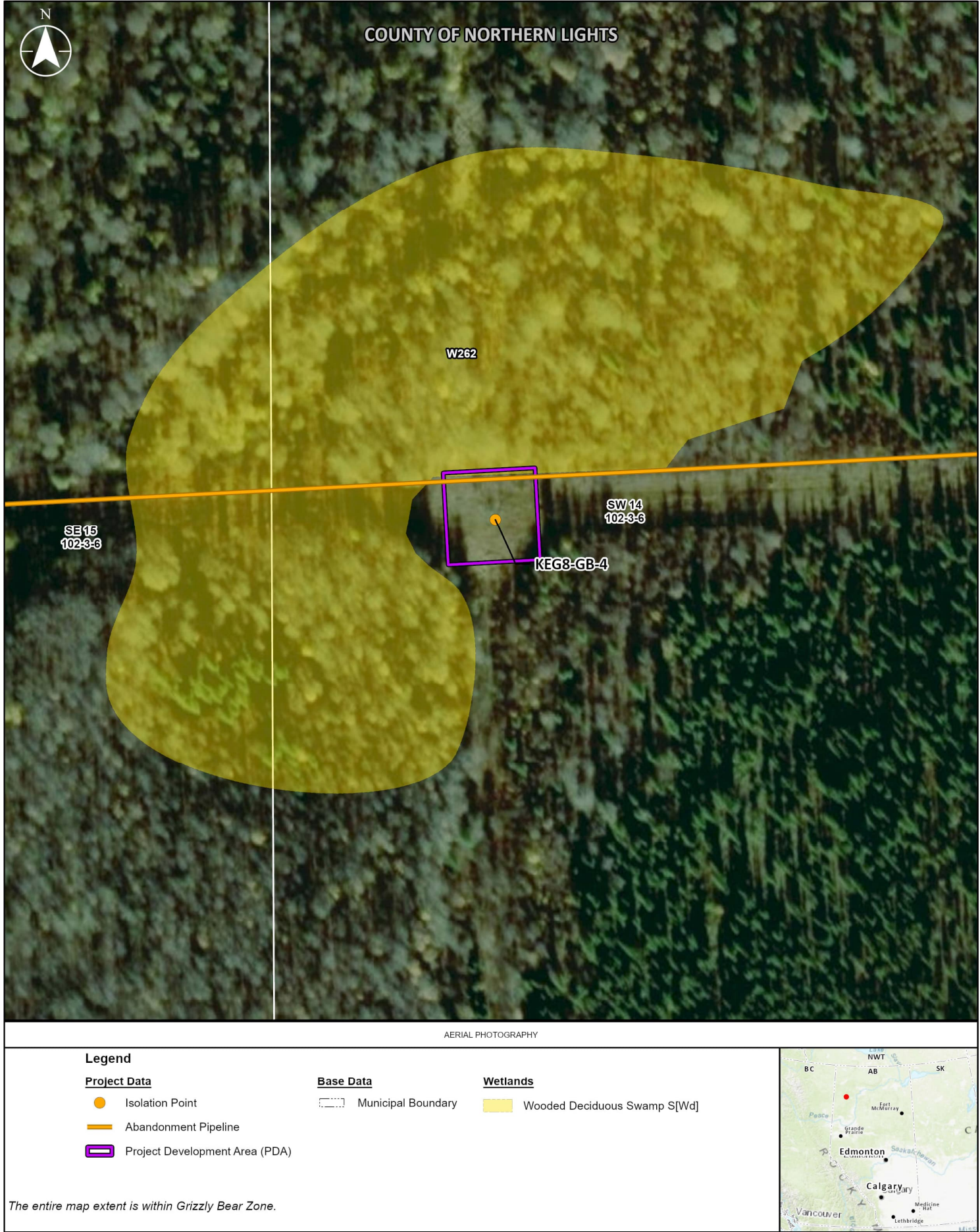
Yours truly,
**NGTL GP Ltd., as general partner on behalf of
NGTL Limited Partnership**

Original signed by

Kenneth Pountney
Regulatory Project Manager,
Regulatory Facilities, Canadian Natural Gas Pipelines

Attachments

cc: Ryan Creighton, Canada Energy Regulator



CarPROGRAM COMPONENT		Keg River Lateral
PROJECT DEVELOPMENT AREA		KEG8-GB-4
PLANNED ACTIVITIES		Isolation from NGTL GP line; excavation to cut and cap the line.
LEGAL LAND LOCATION		SW 14-102-03 W6M
LAND OWNERSHIP		Crown
LAND USE		Green Area; land use within the buffered area is: ROW and wetland.
RESOURCES AND CONSTRUCTION MITIGATION MEASURES	SOILS DESCRIPTION	<ul style="list-style-type: none">Existing soil conditions for this PDA cannot be identified from publicly available data.Regional soils associated with the Lower Boreal Highlands Natural Subregion primarily consist of Orthic Gray Luvisols and gleyed subgroups. Regosols can be found on steep erosional slopes. Peaty Gleysols, Mesisols and Organic Cryosols are typically associated with wetland complexes in the region.
	SOIL HANDLING / SOIL SALVAGE DEPTH AND CRITERIA	<ul style="list-style-type: none">See Environmental Notes for mitigation related to soil handling / soil salvage depth and criteria.
	WATERCOURSES	<ul style="list-style-type: none">No watercourses within or intersecting the PDA.No watercourses within 100 m of the PDA.See Environmental Notes for mitigation related to watercourses
	FISHERIES RESOURCES	<ul style="list-style-type: none">No fish-bearing watercourses within or intersecting the PDA.No fish-bearing watercourses within 100 m of the PDA.See Environmental Notes for mitigation related to watercourses.
	VEGETATION	<ul style="list-style-type: none">No rare vegetation concerns.See Environmental Notes for mitigation related to vegetation and weeds.
	WETLANDS	<ul style="list-style-type: none">One Wooded Deciduous Swamp S[Wd] intersects the PDA.See Environmental Notes for mitigation related to wetlands.
	WILDLIFE	<ul style="list-style-type: none">See Environmental Notes for mitigation measures related to the following:<ul style="list-style-type: none">Grizzly Bear Zone (Secondary Area)Migratory bird nesting period for the PDA is May 6 to August 8
	HISTORICAL RESOURCES	<ul style="list-style-type: none">There are no known HRV lands or historical resources within the PDA.See Environmental Notes for mitigation related to historical resources.
	TRADITIONAL LAND USE	<ul style="list-style-type: none">Currently there are no known TLU sites within the PDA.See Environmental Notes for mitigation related to TLU.
	SITE CONTAMINATION CONSIDERATIONS	<ul style="list-style-type: none">See Environmental Notes for mitigation related to site contamination considerations.
	ACCESS	<ul style="list-style-type: none">Restrict all abandonment activities to the approved Project site. All Project traffic will adhere to safety and road closure regulations.
	RECLAMATION	<ul style="list-style-type: none">Where the pipe or a facility has been removed, as required, acquire an appropriate volume of fill to replace the void. Fill material must be clean, free of weeds, match surrounding soil texture and be approved in accordance with Company requirements prior to use.See Environmental Notes for mitigation related to reclamation.
	OTHER	

NOTES:
Refer to the Environmental Protection Plan for a complete understanding of the mitigation requirements for the Project.

SHEET REVISION Rev 1	INTERNAL ID 0	PROJECTION 10TM AEP Forest	DATUM NAD 83	PREPARED BY <div>Jacobs</div>
<div><div>Project Data: TransCanada Pipelines Ltd. Jacobs 2024; Transportation: Atlas JS 2023; Alberta Municipal Boundaries: AtlasJS 2024; Hydrology: HPS 2011; NRCan 2009; Wetlands: Jacobs 2025; History: Resources: Alberta Culture and Tourism 2023; Vegetation: Alberta Environment and Parks 2022; Wildlife Sensitivity: Alberta Environment and Parks 2021; Wildlife Critical Habitat: Environment and Climate Change Canada 2022; AGRASID Soils 4 © Alberta Agriculture and Rural Development 2014; Imagery: Esri, HERE, Garmin, FAO, NOAA, USGS, EPA, AATFC, NRCan, Mapbox.</div></div>			DATE June 2025	PREPARED FOR <div>TC Energy</div>

0306090

Metres - 1:1,500

Original Page Size: 11 x 17

ENVIRONMENTAL SITE INFORMATION SHEET

2024 ABANDONMENT PROGRAM

Keg River Lateral



Legend

Project Data

- Abandonment Pipeline
- Keg River North - 452 GB
- Project Development Area (PDA)

Base Data

- Stream
- Municipal Boundary

Wetlands

- Wooded Mixedwood Swamp S[Wm]

AERIAL PHOTOGRAPHY

The entire map extent is within Grizzly Bear Zone.

PROGRAM COMPONENT		Keg River North Lateral
PROJECT DEVELOPMENT AREA		KEG RIVER NORTH - 452 GB
PLANNED ACTIVITIES		Isolation from NGTL GP line; Removal of above-grade and below-grade infrastructure including anodes, fuel gas connection piping, below-grade cables and anode wiring, as applicable.
LEGAL LAND LOCATION		NE 26-103-04 W6M
LAND OWNERSHIP		Crown
LAND USE		Green Area; land use within the PDA is: ROW, wetland, and forested.
RESOURCES AND CONSTRUCTION MITIGATION MEASURES	SOILS DESCRIPTION	<ul style="list-style-type: none">Existing soil conditions for this PDA cannot be identified from publicly available data.Regional soils in the Central Mixedwood Natural Subregion primarily consist of Gray Luvisols, coarse-textured, sandy Dystric and Eutric Brunisols and poorly drained Orthic and Peaty Gleysols in low laying areas. Terric and Fibric Mesisols, Fibrisols, and Cryosols are typically associated with wetlands.
	SOIL HANDLING / SOIL SALVAGE DEPTH AND CRITERIA	<ul style="list-style-type: none">See Environmental Notes for mitigation related to soil handling / soil salvage depth and criteria.
	WATERCOURSES	<ul style="list-style-type: none">PDA crosses an unnamed tributary to Chinchaga River (276741).No other watercourses are within 100 m of the PDA.See Environmental Notes for mitigation related to watercourses.
	FISHERIES RESOURCES	<ul style="list-style-type: none">PDA crosses an unnamed tributary to Chinchaga River (276741). This watercourse is an unmapped Class C water body with a RAP of April 16 to July 15.Fish bearing status is unknown.See Environmental Notes for mitigation related to watercourses.
	VEGETATION	<ul style="list-style-type: none">No rare vegetation concerns.See Environmental Notes for mitigation related to vegetation and weeds
	WETLANDS	<ul style="list-style-type: none">One Wooded Mixedwood Swamp S[Wm] intersects the PDA. COP notification is not required.See Environmental Notes for mitigation related to wetlands.
	WILDLIFE	<ul style="list-style-type: none">See Environmental Notes for mitigation measures related to the following:<ul style="list-style-type: none">Grizzly Bear Zone (Secondary Area)Migratory bird nesting period for the PDA is May 6 to August 8
	HISTORICAL RESOURCES	<ul style="list-style-type: none">There are no known HRV lands or historical resources within the PDA.See Environmental Notes for mitigation related to historical resources.
	TRADITIONAL LAND USE	<ul style="list-style-type: none">Currently there are no known TLU sites within the PDA.See Environmental Notes for mitigation related to TLU.
	SITE CONTAMINATION CONSIDERATIONS	<ul style="list-style-type: none">See Environmental Notes for mitigation related to site contamination considerations.
	ACCESS	<ul style="list-style-type: none">Restrict all abandonment activities to the approved Project site. All Project traffic will adhere to safety and road closure regulations.
	RECLAMATION	<ul style="list-style-type: none">Where the pipe or a facility has been removed, as required, acquire an appropriate volume of fill to replace the void. Fill material must be clean, free of listed weeds, match surrounding soil texture and be approved in accordance with Company requirements prior to use.See Environmental Notes for mitigation related to reclamation.
	OTHER	

NOTES:
Refer to the Environmental Protection Plan for a complete understanding of the mitigation requirements for the Project.

SHEET REVISION

Rev 1

INTERIAL ID

0

PROJECTION

10TMAEP Forest

DATUM

NAD 83

DATE

June 2025

PREPARED BY

Jacobs

PREPARED FOR

TC Energy

Project Data: TransCanada Pipelines Ltd. Jacobs 2024; Transportation: Atlas 2023; Alberta Municipal Boundaries: Atlas 2024; Hydrology: H2S 2019; NRC 2009; Wetlands: Jacobs 2020; Habitat: Resource: Alberta Culture and Tourism 2021; Vegetation: Alberta Environment and Parks 2022; Wildlife Sensitivity: Alberta Environment and Parks 2021; Wildlife Critical Habitat: Environment and Climate Change Canada 2022; AGRASIS: Soil 4.0 Alberta Agriculture and Rural Development 2014; Imagery: Esri, HERE, Garmin, FAO, NOAA, USGS, EPA, AATC, NRCan, Mapbox

0306090

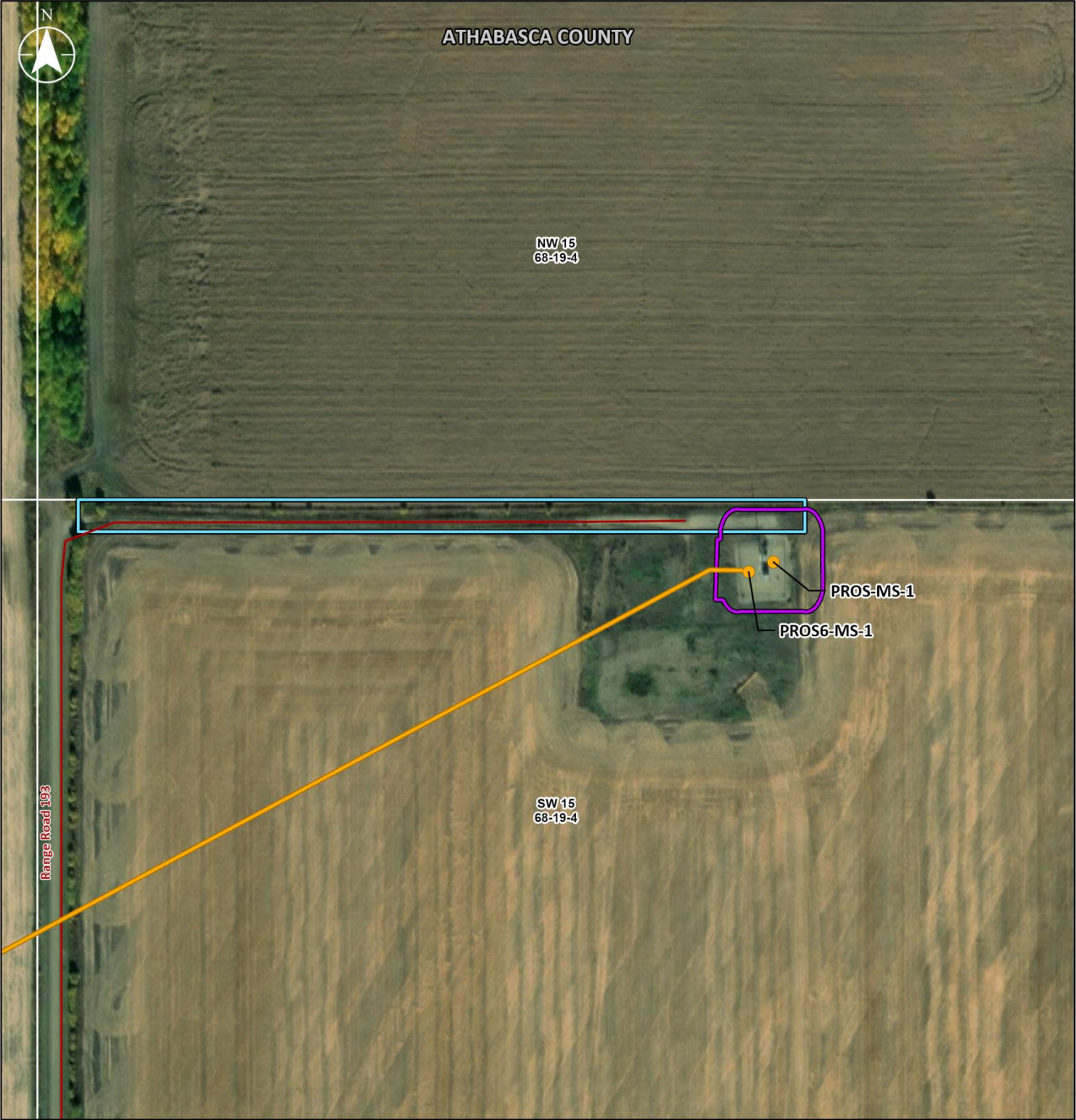
Meters - 1:2,000

Original Page Size: 11 x 17

ENVIRONMENTAL SITE INFORMATION SHEET

2024 ABANDONMENT PROGRAM

Keg River North Lateral



PROGRAM COMPONENT		Prosperity Lateral; Prosperity Receipt MS, Prosperity Access Road
PROJECT DEVELOPMENT AREA		PROS6-MS-1; PROS-MS-1; Prosperity Receipt MS, Prosperity Access Road
PLANNED ACTIVITIES		PROS6-MS-1 and PROS-MS-1: Isolation from NGTL GP line; Abandon in-place. Prosperity Receipt MS: Isolation from NGTL GP line; Removal of meter station components including buildings, yard piping, fencing and gravel. Prosperity Access Road: Abandonment and reclamation of the road; removal of gravel, grade re-contouring, topsoil replacement and seeding.
LEGAL LAND LOCATION		SW 15-068-19 W4M
LAND OWNERSHIP		NGTL GP-owned and Freehold
LAND USE		White Area; land use within the buffered area is: cultivated, cutblock/coniferous, road and facility
RESOURCES AND CONSTRUCTION MITIGATION MEASURES	SOILS DESCRIPTION	<ul style="list-style-type: none">80% Orthic Gray Luvisol (Tawatinaw and Lavesta), 20% Orthic Luvic Gleysol (Misc. Gleysol) developed on glaciolacustrine and gravelly, medium textured till. Well to poorly drained.Considerations: Stripping limitations (very thin, gravelly), moderate to high water erosion risk on slopes >5% and moderate to high compaction and rutting risk, sandy soils may be susceptible to face instability during excavation/trenching.
	SOIL HANDLING / SOIL SALVAGE DEPTH AND CRITERIA	<ul style="list-style-type: none">See Environmental Notes for mitigation related to soil handling / soil salvage depth and criteria.
	WATERCOURSES	<ul style="list-style-type: none">No watercourses within or intersecting the PDA.No watercourses within 100 m of the PDA.See Environmental Notes for mitigation related to watercourses.
	FISHERIES RESOURCES	<ul style="list-style-type: none">No fish-bearing watercourses within or intersecting the PDA.No fish-bearing watercourses within 100 m of the PDA.See Environmental Notes for mitigation related to watercourses.
	VEGETATION	<ul style="list-style-type: none">No rare vegetation concerns.See Environmental Notes for mitigation related to vegetation and weeds.
	WETLANDS	<ul style="list-style-type: none">No wetlands identified within 30 m of the PDA.See Environmental Notes for mitigation related to wetlands.
	WILDLIFE	<ul style="list-style-type: none">See Environmental Notes for mitigation measures related to the following:<ul style="list-style-type: none">Migratory bird nesting period for the PDA is May 2 to August 10
	HISTORICAL RESOURCES	<ul style="list-style-type: none">There are no known HRV lands or historical resources within the PDA.See Environmental Notes for mitigation related to historical resources.
	TRADITIONAL LAND USE	<ul style="list-style-type: none">Currently there are no known TLU sites within the PDA.See Environmental Notes for mitigation related to TLU.
	SITE CONTAMINATION CONSIDERATIONS	<ul style="list-style-type: none">See Environmental Notes for mitigation related to site contamination consideration.
	ACCESS	<ul style="list-style-type: none">Restrict all abandonment activities to the approved Project site. All Project traffic will adhere to safety and road closure regulations.
	RECLAMATION	<ul style="list-style-type: none">Where the pipe or a facility has been removed, as required, acquire an appropriate volume of fill to replace the void. Fill material must be clean, free of weeds, match surrounding soil texture and be approved in accordance with Company requirements prior to use.See Environmental Notes for mitigation related to reclamation.
	OTHER	

NOTES:
Refer to the Environmental Protection Plan for a complete understanding of the mitigation requirements for the Project.

Legend


Project Data

- Isolation Point
- Abandonment Pipeline
- Project Development Area (PDA)

Base Data

- Road
- PDA - Prosperity Access Road
- Municipal Boundary



SHEET REVISION	Rev 1	INTERNAL ID	0	PROJECTION	10TM AEP Forest	DATUM	NAD 83	
Project Data: TransCanada Pipelines Ltd., Jacobs 2024, Transportation: Athabasca 2023, Alberta Municipal Boundaries: Athabasca 2024, Hydrology: HNS 2011, NRCAN 2009, Wetlands: Jacobs 2025, Habitat: Resource: Alberta Culture and Tourism 2023, Vegetation: Alberta Environment and Parks 2022, Wildlife: Sensitivity: Alberta Environment and Parks 2021, Wildlife: Critical Habitat: Environment and Climate Change Canada 2022, AGRASIS: Soils 4.0: Alberta Agriculture and Rural Development 2014, Imagery: Esri, HERE, Garmin, FAO, NOAA, USGS, EPA, AATC, NRCAN, Source: Esri, Maxar, Earthstar Community							DATE	May 2025
 Metres ~ 1:2,500								
Original Page Size: 11 x 17								

PREPARED FOR

TC Energy

ENVIRONMENTAL SITE INFORMATION SHEET

2024 ABANDONMENT PROGRAM
Prosperity Lateral; Prosperity Receipt MS, Prosperity Access Road

15-
68-19-4



NOT FIELD SURVEYED