



450 – 1 Street SW
Calgary, Alberta T2P 5H1

Tel: (403) 920-2940
Email: nicole_prince@tcenergy.com

December 18, 2023

Filed Electronically

Canada Energy Regulator
Suite 210, 517 Tenth Avenue SW
Calgary, Alberta T2R 0A8

Attention: Ramona Sladic, Secretary of the Commission

Dear Ramona Sladic:

**Re: NOVA Gas Transmission Ltd. (NGTL)
2021 Meter Stations and Laterals Abandonment Program (2021 Abandonment Program)
Order ZO-006-2023 (Order)
Program Update No. 4 – Rambling Creek Lateral Cathodic Protection Groundbed
File No.: OF-Fac-Gas-N081-2022-05 01**

On March 30, 2023, the Commission of the Canada Energy Regulator (Commission) issued the Order approving the 2021 Abandonment Program including its proposed scope and methodology of abandonment, including associated cathodic protection (CP) systems.¹ As Abandonment Activities have progressed, NGTL has identified an additional CP groundbed associated with the Rambling Creek Lateral that was not previously disclosed in the 2021 Abandonment Program application. Details in support of the Program update are provided below.

The Rambling Creek-616 sacrificial groundbed is located with the existing previously disturbed Rambling Creek Lateral right-of-way at approximately 56.81930542, -118.56587219. NGTL will remove the groundbed including any related infrastructure (below-grade horizontal ground-bed materials, including anodes and carbonaceous, and below-grade cables and anode wiring) to pipeline depth, and is consistent with the groundbed removal associated with Wayne North Lateral and Russel Creek Lateral.

The area of the groundbed was assessed as part of the Program.² NGTL notes that the scope, scale and nature of this change does not result in new environmental interactions not previously assessed in the Program's Environmental and Socio-Economic Assessment or significant environmental effects. The scope is addressed by existing standard mitigation measures and there are no updates required to the Program's EPP. NGTL provides, as Attachment 1, a revised Environmental Site Information Sheet depicting the groundbed within the previously assessed area. NGTL further reconfirms that Abandonment Activities, including the removal of this

¹ Filing ID: C23857.

² Filing ID: C24505; Condition 6: Updated EPP, PDF page 218 of 245.

groundbed will remain within the existing previously disturbed areas under existing dispositions.

As the location of this groundbed is within the Chinchaga Caribou Range, NGTL commits to updating the total calculation of disturbance within the caribou range in the Program's Caribou Habitat Restoration Plan.³

NGTL anticipates starting Abandonment Activities for the Rambling Creek Lateral on or about January 8, 2024.

If the Commission requires additional information with respect to this filing, please contact me by phone at (403) 920-2940 or by email at nicole_prince@tcenergy.com.

Yours truly,
NOVA Gas Transmission Ltd.

Original signed by

Nicole Prince
Regulatory Project Manager,
Regulatory Facilities, Canadian Natural Gas Pipelines

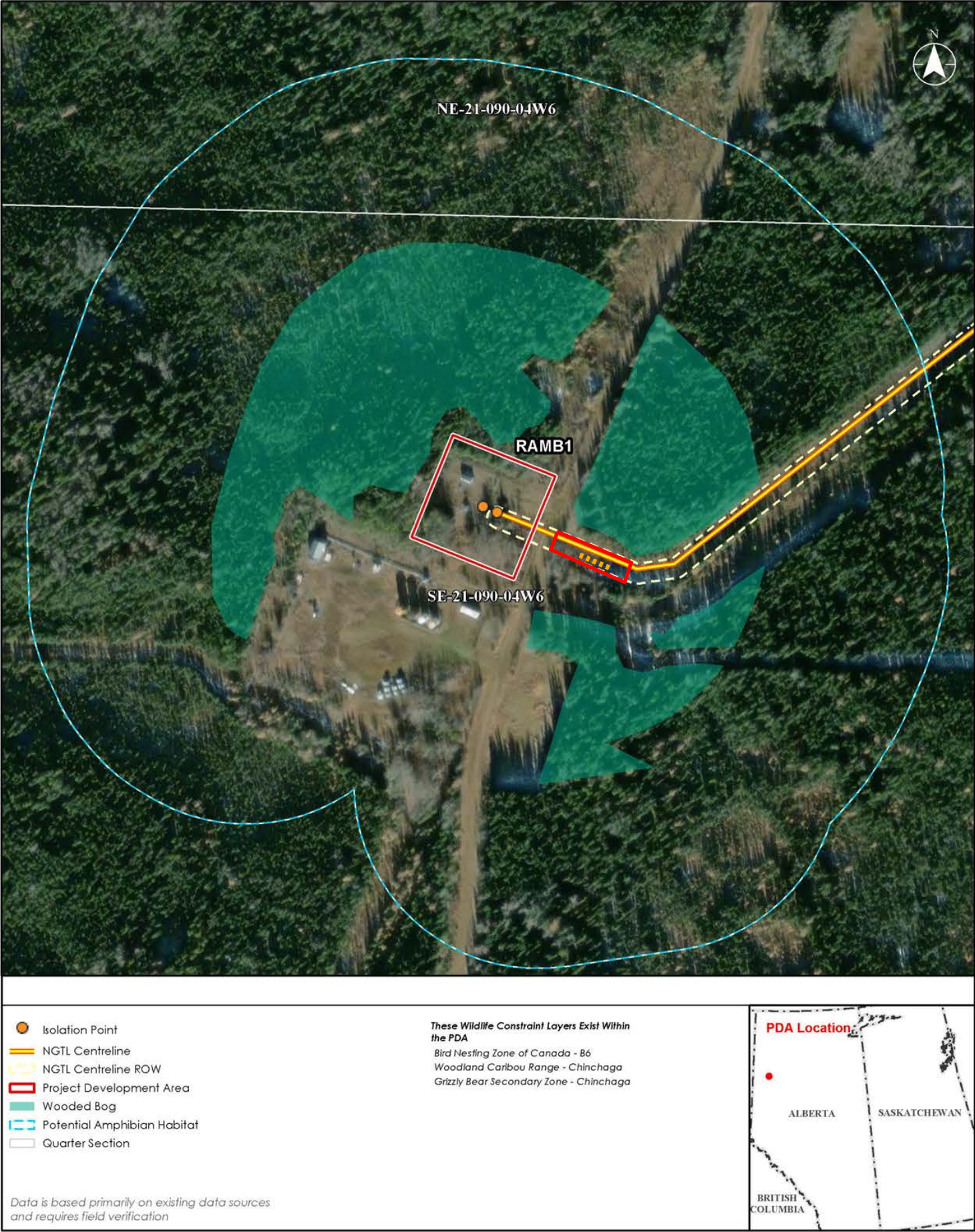
Attachment

cc: Amélie Fortier, Canada Energy Regulator

³ Filing IDs: C24506 and C25336.

Environmental Figures for Facilities Projects – 2021 Abandonment Program

<div><div>NOTES:</div><div>These Environmental Site Information Sheets (ESIS) are intended to be used in conjunction with the Program-specific Environmental Protection Plan (EPP). Measures outlined in the ESIS are site-specific measures to address specific environmental features and are not a comprehensive list of all measures to be applied. Refer to the EPP for additional general measures for the Program. The following measures are applicable to all PDAs:</div></div>
<div><div>Soil Handling / Soil Salvage Depth and Criteria</div><div><ul style="list-style-type: none">Should Program traffic or other Program activity disturb the topsoil/strippings piles and there is a potential for wind erosion, apply additional water and/or tackifier, if warranted.In the event of adverse weather that could result in rutting, sedimentation and erosion, and/or compaction, the Environmental Inspector(s) or designate(s), in consultation with the Construction Manager, may implement contingency measures as outlined in the Adverse Weather Contingency Plan (Appendix 1E). A soils specialist and/or the responsible regulatory agency may be consulted, if warranted.Where soil stripping is required:<ul style="list-style-type: none">Stripping depth will be determined by the Environmental Inspector(s) or designate(s) based on site-specific conditions. Assume salvage depth is approximately 10-15 cm.Strip full area required for isolation.If stripped, topsoil/strippings will be stockpiled and re-used for site reclamation.The strippings will be stockpiled in a designated location, in a manner that will not cause erosion or sedimentation.</div></div>
<div><div>Vegetation</div><div><ul style="list-style-type: none">If previously unidentified rare plants or rare ecological communities are found on the construction footprint prior to or during abandonment activities, implement the Plant Species and Ecological Communities of Concern Discovery Contingency Plan (Appendix 1E of the EPP), and notify the NGTL environmental planner to review proposed mitigation measures.</div></div>
<div><div>Weeds</div><div><ul style="list-style-type: none">In lands with infestations of noxious or prohibited noxious weeds (whether discovered before or during physical abandonment activities or identified on the ESIS), record locations for follow-up with treatment and monitoring, as appropriate.Follow general weed mitigation measures outlined in Section 8.1 of the EPP.</div></div>
<div><div>Wildlife</div><div><ul style="list-style-type: none">Refer to Sections 7 and 8 of the EPP for additional mitigation measures for wildlife and wildlife habitat.If previously unidentified listed or sensitive wildlife species or their site-specific habitat (e.g., dens, nests) are identified during physical abandonment activities, report to the Environmental Inspector(s) or designate(s) and implement the Wildlife Species of Concern Discovery Contingency Plan.</div></div>
<div><div>MGB - Migratory Bird Range and OWR - Owls and Raptors</div><div><ul style="list-style-type: none">If physical abandonment activities (including clearing and reclamation) are scheduled to commence during the raptor nesting period, migratory bird Primary Nesting Period (PNP) and the extended period for bird species at risk (March 15 to August 31, inclusive) (ECCC 2018a; Gregoire 2020, pers. comm.; GOA 2021), refer to the Breeding Bird and Nest Management Plan (Appendix 1F of the EPP).In the event an active nest is found or breeding behaviour is observed, it will be subject to site-specific mitigation measures (i.e., clearly marked protective buffer around the nest and/or non-intrusive monitoring) based on the Breeding Bird and Nest Management Plan (Appendix 1F of the EPP).</div></div>
<div><div>Historical Resources</div><div><ul style="list-style-type: none">If historical or palaeontological features (e.g., arrow heads, modified bone, pottery fragments, fossils) not previously identified are found on the Project footprint during abandonment activities, implement the measures outlined in the Cultural Resource Discovery Contingency Plan (Appendix 1E of the EPP).</div></div>
<div><div>Traditional Land Use</div><div><ul style="list-style-type: none">If TLU sites not previously identified are found on the Project footprint during abandonment activities, implement the Cultural Resource Discovery Contingency Plan (Appendix 1E of the EPP).</div></div>
<div><div>Site Contamination Considerations</div><div><ul style="list-style-type: none">Purge and clean the pipeline segments to be abandoned prior to isolation or other physical abandonment activities. In the event of a spill, refer to the Release Contingency Plan (Appendix 1E of the EPP).</div></div>
<div><div>Reclamation</div><div><ul style="list-style-type: none">Natural recovery is the preferred method of reclamation in non-agricultural areas on level terrain where erosion is not expected. Where natural recovery is not preferred, seed disturbed areas as per site requirements and as specified by the Environmental Inspector(s) or designate(s).Seed mix to be determined or as directed by the relevant regulatory authority or based on input from the landowner, as applicable.Refer to Section 8.7 of the EPP for a complete listing of reclamation requirements.</div></div>



PROGRAM COMPONENT		Rambling Creek RMS and Rambling Creek Lateral
PROJECT DISTURBANCE AREA		Rambling Creek Catholic Protection Groundbed No. 616
PLANNED ACTIVITIES		Removal of Rambling Creek Catholic Protection Groundbed No. 616 and related infrastructure
LEGAL LAND LOCATION		07-21-090-04 W6M
LAND OWNERSHIP		Crown
LAND USE		Developed; Forested / Shrub; Vegetated ROW / Green Area
RESOURCES AND CONSTRUCTION MITIGATION MEASURES	SOILS DESCRIPTION	Existing soil conditions for this PDA cannot be identified from publicly available data. It is expected that in forested areas, soil orders are likely to be Brunisols, Gleysols, Luvisols and Organic.
	SOIL HANDLING / SOIL SALVAGE DEPTH AND CRITERIA	• See notes on page 1.
	WATERCOURSES	• No watercourses within or intersecting the Project Development Area (PDA). • No watercourses within 100 m of the PDA.
	FISHERIES RESOURCES	• No fish-bearing watercourses within or intersecting the PDA. • No fish-bearing watercourses within 100 m of the PDA.
	VEGETATION	Plant Species and Ecological Communities of Management Concern • No rare plants or rare ecological communities have been identified within the PDA.
	WETLANDS	• No wetlands within or intersecting the PDA. • Four wetlands (BWc Bog - wooded coniferous) are located within 100 m of the PDA. • Follow general wetland mitigation measures as outlined in Section 8.1 of the EPP.
	WILDLIFE	BATS - Species of Management Concern • If physical abandonment activities are required during the bat active season (approximately May 1 to September 30) and where buildings, other suitable man-made structures or large, mature trees must be removed or cleared, a qualified Wildlife Resource Specialist will undertake bat surveys to assess roosting potential and identify potential bat roosts. If an active bat roost or nest is discovered, the qualified Wildlife Resource Specialist will determine appropriate mitigation, in consultation with AEPA, as required. • If an active bat roost is found in a building, man-made structure or tree within the abandonment footprint, the primary mitigation is to avoid disturbance to the roost site until it is no longer active (as determined by periodic roost checks). If avoidance of the active roost is not possible, other mitigation measures such as bat exclusion from buildings using one-way exits (after August 31 for maternity roosts to avoid trapping pups) and installation of supplementary roost habitat (e.g., bat houses) will be considered on a case-by-case basis depending on roost location and the type of roost (e.g., maternity or simple day roost), in consultation with AEPA. AMPH - Potential Amphibian Habitat • Where physical abandonment activities (including clearing and/or reclamation) are scheduled to occur during the amphibian active period (April 15 to September 30, depending on species and seasonal conditions) within 100 m of potential breeding and foraging habitat (i.e., suitable breeding wetlands) or within the sensitive amphibian range, pre-abandonment amphibian sweeps will be completed daily prior to activity. • Where breeding wetlands are identified within 100 m of the Project footprint, install exclusion fencing around the portion of the Project footprint that overlaps the wetland and/or its 100 m buffer or suitable length based on site conditions as determined by the Environmental Inspector(s) or designate(s) and the Wildlife Resource Specialist prior to physical abandonment activities. Undertake searches of the fenced area and relocate any amphibians encountered to suitable habitat outside the exclusion area. Where fencing is not feasible, undertake area searches daily prior to activity and relocate amphibians to suitable habitat away from the workspace (relocation sites to be determined in field). • If a relocation program is required, a permit for the capture and handling of amphibians will be obtained from AEPA prior to the relocation program. All handling procedures will follow Alberta Wildlife Animal Care Committee Class Protocol #003 – Capture and Handling of Amphibians. The capture and handling of amphibians will occur under the direction of a qualified Wildlife Resource Specialist. GRBZ - Grizzly Bear Secondary Recovery Zone • Where physical abandonment activities (including clearing and reclamation) are scheduled during the bear denning period (October 1 to April 30), a grizzly bear den survey will be undertaken prior to physical abandonment activities in suitable denning habitat within 200 m of a PDA by a Wildlife Resource Specialist, preferably in October or November during suitable weather and snowfall conditions. If an active den is discovered, consult with AEPA to determine appropriate mitigation. • Follow Alberta BearSmart guidelines. Food wastes will be collected in bear-resistant containers or inside vehicles and removed daily from the site to approved disposal receptacles. • In the event that a grizzly bear, black bear, or sign of a bear is observed, report to the Environmental Inspector(s) or designate(s) and implement the Wildlife Species of Concern Discovery Contingency Plan (Appendix 1E). WCR - Woodland Caribou Range • Avoid physical abandonment activities (including clearing and reclamation) within the caribou RAP (February 15 through July 15) to the extent possible. If physical abandonment activities are required within the RAP, NGTL will consult with AEPA and implement appropriate mitigation measures to reduce Project effects on caribou populations and caribou habitat. • Speed limits will be established with signage and enforced on all access used for the Project within caribou range. • If caribou are encountered on roads, stop vehicles/equipment and allow the caribou to move through the area undisturbed. Advise others working nearby of the presence of caribou in the area. • Currently there are no known historical resources within the PDA.
	HISTORICAL RESOURCES	• Currently there are no known historical resources within the PDA.
	TRADITIONAL LAND USE	• Currently there are no known traditional land use (TLU) sites within the PDA.
	SITE CONTAMINATION CONSIDERATIONS	• Existing and/or potential contamination associated with project facilities will be investigated and addressed (where required) in accordance with the Phase II Environmental Site Assessment Plan, submitted for CER approval as part of the Application. • In the event contaminated soils or other materials are encountered during Project activities, implement the Contaminated Soils Contingency Plan (Appendix 1E of the EPP) and the Chemical and Waste Management Plan (Appendix 1F of the EPP).
	ACCESS	• Restrict all abandonment activities to the approved Project site. All Project traffic will adhere to safety and road closure regulations.
	RECLAMATION	• Revegetate PDAs in grizzly bear recovery zones with vegetative species compatible and consistent with the adjacent vegetation type using a combination of minimal disturbance techniques and natural regenerations. • Following completion of physical abandonment activities in caribou range, access management measures and habitat restoration will be completed using measures appropriate to the site type and surrounding vegetation. Follow Reclamation Measures outlined in Section 8.7 of the EPP and in accordance with the Caribou Habitat Restoration Plan filed for the Program pursuant to Condition 12 of CER Order ZO-006-2023. • Where the pipe or a facility has been removed, as required, acquire an appropriate volume of fill to replace the void. Fill material must be clean, free of weeds, match surrounding soil texture and be approved in accordance with Company requirements prior to use. • See Notes on Page 1.
	OTHER	
NOTES: Refer to the Environmental Protection Plan for a complete understanding of the mitigation requirements for the Project		

SHEET REVISION

01

INTERNAL ID

0

PROJECTION

UTM ZONE 12

DATUM

NAD 83

Source:
Base data provided by Canvec, ESRI, ARJIS, NRCan
Project Data: Stantec Consulting Ltd and TC Energy
Service Layer Credits: Source: Esri, Mapbox, Earthstar Geographics, and the GIS User Community

DATE

20230421

0 20 40 60

meters - 1:2,500

Original Page Size: 11 x 17

123513813-002

PREPARED BY

PREPARED FOR

2021 ABANDONMENT PROGRAM

ENVIRONMENTAL SITE INFORMATION SHEET

Rambling Creek RMS and Rambling Creek
Lateral Abandonment
RAMB1

Rambling Creek CP Groundbed No. 616

PAGE 9 of 38

December 2023

Page 2 of 2