

# Agricultural activities.

## Approvals for working around TC Energy's facilities

To ensure our pipelines and facilities operate safely, written consent from TC Energy must be obtained in Canada before any of the following:

- Constructing or installing a facility across, on, along or under a TC Energy pipeline right-of-way.
- Conducting ground disturbance (excavation or digging) on or within the prescribed area (30 metres or 100 feet from the centreline of the pipeline).
- Driving a vehicle, mobile equipment or machinery across a TC Energy pipeline right-of-way outside the travelled portion of a highway or public road.
- Using any explosives within 300 metres or 1,000 feet of TC Energy's pipeline right-of-way.

## What is the prescribed area?

The prescribed area extends 30 metres on either side of the pipeline centreline. Ground disturbance within this zone requires written consent. Contact your local One-Call Centre to request a locate and TC Energy will come to the site and mark the pipeline. The existence of the prescribed area does not necessarily mean development of the land cannot occur.

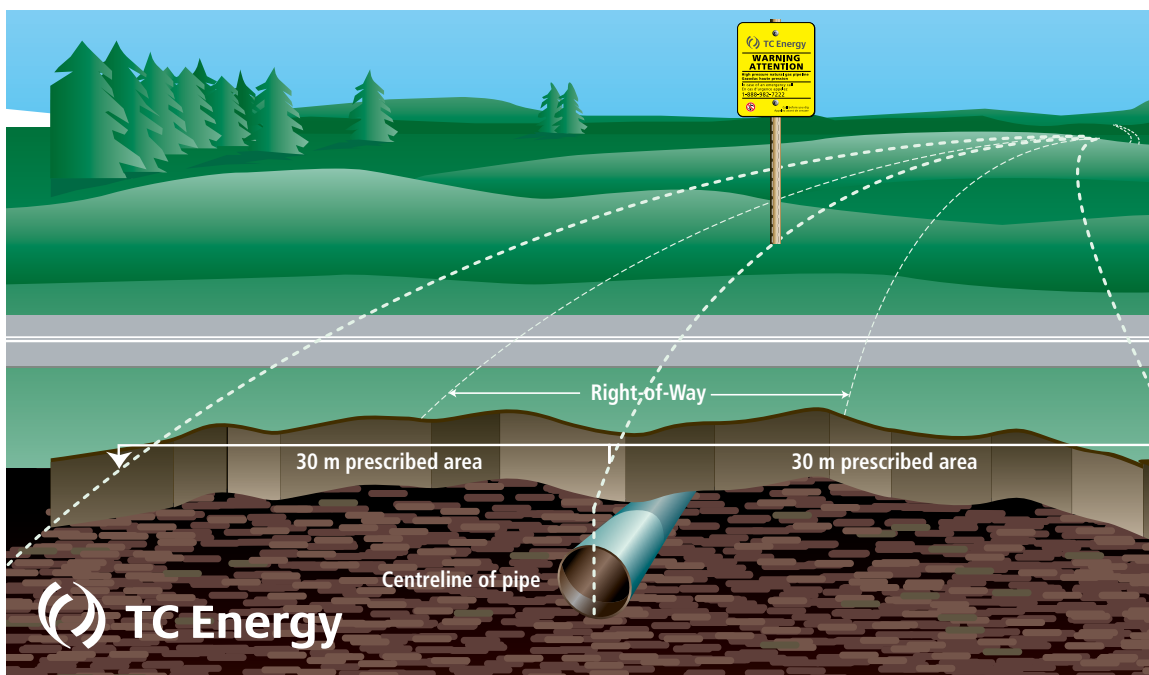
Standard farming activities no deeper than 45 cm can be completed without written consent from TC Energy. Farm vehicles and equipment can cross the pipeline right-of-way without written consent from TC Energy if they are being used to perform an agricultural activity and their loaded axle weight and tire pressure are within the manufacturer's approved limits and operating guidelines. If you are unsure if your activities are permitted, please contact TC Energy (see the side bar for more details).

The following agricultural activities do not require written consent from TC Energy (provided they are less than 45 cm deep).

- Plowing
- Fertilizing
- Disking
- Harrowing
- Cultivating
- Seeding
- Planting
- Spraying
- Tilling
- Baling
- Rolling
- Harvesting

The following agricultural activities always require written consent from TC Energy:

- Brush clearing
- Ditching
- Trenching
- Earth moving
- Drainage ditch cleanout
- Drain tile installation
- Fencing/Landscaping
- Augering
- Using explosives
- Any excavation or ground disturbance that removes or adds soil cover to the pipeline (including the right-of-way)



## Activity checklist (for activities that require permission from TC Energy)

1. Plan your activity. Identify the precise location of your work, check records for evidence of pipelines or other buried facilities.
2. Go to the site and look for pipeline warning signs or pipeline marker posts.
3. Contact TC Energy and obtain a copy of TC Energy's guidelines for constructing a facility, conducting activities causing a ground disturbance, or crossings in the vicinity of a pipeline.
4. Make a locate request either online ([www.clickbeforeyoudig.com](http://www.clickbeforeyoudig.com)), via mobile apps (Saskatchewan and Quebec) or via phone (see contact numbers to the right). The One-Call Centre will notify owners of buried utilities in your area, who will send representatives to make these facilities with flags, paint or other marks, helping you avoid damaging them.
5. Apply for written consent using TC Energy's online application form ([writtenconsent.transcanada.com](http://writtenconsent.transcanada.com) or call 1-877-872-5177). Often written consent for minor activities can be obtained directly from a regional TC Energy representative through a locate request.
6. Be on site when the pipeline is located, and know the meaning of the pipeline markings.
7. Review CER requirements with all persons working on your behalf, including employees, contractors and subcontractors, to ensure they are aware of their obligations. Keep documents with safety requirements and guidance on site.
8. Expose the pipe by hand digging or other acceptable excavation techniques accepted by TC Energy prior to any mechanical excavation within five metres of the pipe. Follow the instructions of TC Energy's authorized field representative.
9. Notify TC Energy prior to backfilling over the pipe or facilities, where the pipe or facilities have been exposed. Follow the instructions of TC Energy's authorized field representative.
10. IMMEDIATELY NOTIFY TC ENERGY IF YOU COME INTO CONTACT WITH THE PIPELINE! A small dent or scratch in the pipe's coating can impact the long term safety of the line and must be assessed by TC Energy.

## Click or Call Before You Dig

British Columbia .....	1-800-474-6886
Alberta .....	1-800-242-3447
Saskatchewan .....	1-866-828-4888
Manitoba .....	1-800-940-3447
Ontario .....	1-800-400-2255
Québec .....	1-800-663-9228
Web .....	<a href="http://www.clickbeforeyoudig.com">www.clickbeforeyoudig.com</a>

## Written consent contact information

Online application .....	<a href="http://writtenconsent.transcanada.com">writtenconsent.transcanada.com</a>
Phone .....	1-877-872-5177
Email .....	<a href="mailto:crossings@tcenergy.com">crossings@tcenergy.com</a>
Quebec Email .....	<a href="mailto:quebec_crossings@tcenergy.com">quebec_crossings@tcenergy.com</a>

## General contact information

Land .....	1-866-372-1601
Public Awareness .....	1-855-458-6715

The majority of TC Energy's pipelines are regulated by the Canada Energy Regulator in Canada, with some pipelines regulated provincially. For more information on CER-regulated pipelines, visit [www.cer-rec.gc.ca](http://www.cer-rec.gc.ca).

*Note: this fact sheet is intended for farmers/landowners that conduct agricultural activities. See the "General Activities" fact sheet if you are a member of the general public, as different regulations apply to you.*

